

# Laboratory Surveillance Report

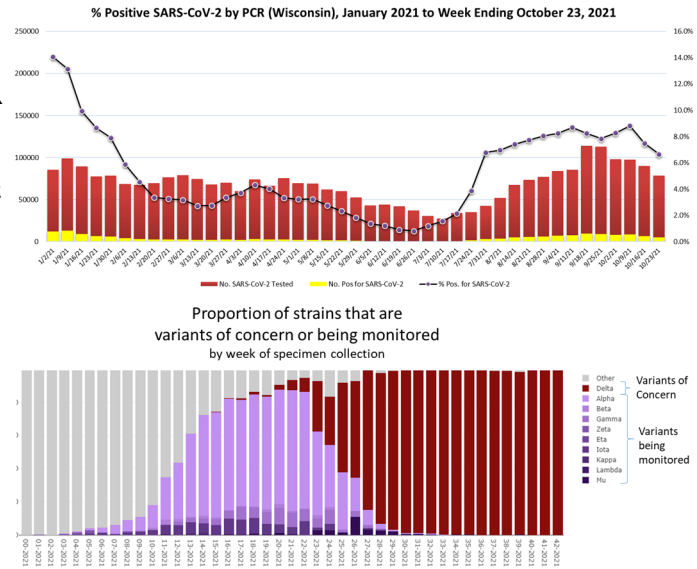
## SARS-CoV-2 Surveillance Updates

### Surveillance Data Synopsis

- RSV and Rhinovirus/Enterovirus activity remain high in Wisconsin.
- SARS-CoV-2 activity remains high in Wisconsin.
- Over 99% of the SARS-CoV-2 viruses sequenced recently are the Delta variant of concern.

### SARS-CoV-2 Update

- In Wisconsin, positivity was 6.7% of the 78,671 specimens tested by PCR and reported to WSLH.
- In the US, the 7 day average percent positivity is 5.28%.
- Wisconsin genomic sequencing data showed the Delta [B.1.617.2 and its sublineages] variant of concern was by far the predominant lineage detected (>99%).
- The WSLH sequencing dashboard is available at <https://dataportal.slh.wisc.edu/sc2dashboard>



### To enhance surveillance activities, the WSLH asks labs to please send:

1. Please send **all positive** influenza specimens for further characterization.
2. Please send **a maximum of 5** SARS-CoV-2 specimens per week.

## Other Surveillance Data-Wisconsin

### Week Ending October 23, 2021\*

Resp. Pathogen PCR	# Tested	% Positive
SARS-CoV-2	78,671	6.7
Rhinovirus/ Enterovirus	1033	22.9↓
RSV	3600	21.1↓
Parainfluenza	1082	5.9
Adenovirus	241	1.2
Human metapneumovirus	1103	<1
Influenza	6145	<1
Seasonal coronaviruses	241	<1
<i>B. pertussis</i>	353	<1

### Respiratory

- SARS-CoV-2 activity in WI is decreasing but remains high.
- Rhinovirus/Enterovirus and RSV activity is decreasing but remains high.

### Gastropathogens

- Activity for all gastropathogens in WI is low.
- Others detected included: EPEC (9.2%), EAEC (2.5%), ETEC (1.6%), *Plesiomonas* (<1%) and Astrovirus (4.5%).

### Week Ending October 23, 2021\*

GI Pathogen PCR	# Tested	% Positive
<i>Campylobacter</i>	510	2.7
Sapovirus	134	2.2
<i>Cryptosporidium</i>	283	1.1
STEC	468	1.1
<i>Salmonella</i>	510	1.0
<i>E. coli</i> 0157	201	1.0
Norovirus	315	<1
<i>Shigella</i>	342	<1
Rotavirus	232	<1
<i>Giardia</i>	283	<1
<i>Cyclospora</i>	120	0

\* On a weekly basis, participating Wisconsin clinical laboratories voluntarily report to WSLH the total number of tests performed, the method used for detection, and the number of those tests with positive results.