

# Laboratory Surveillance Report

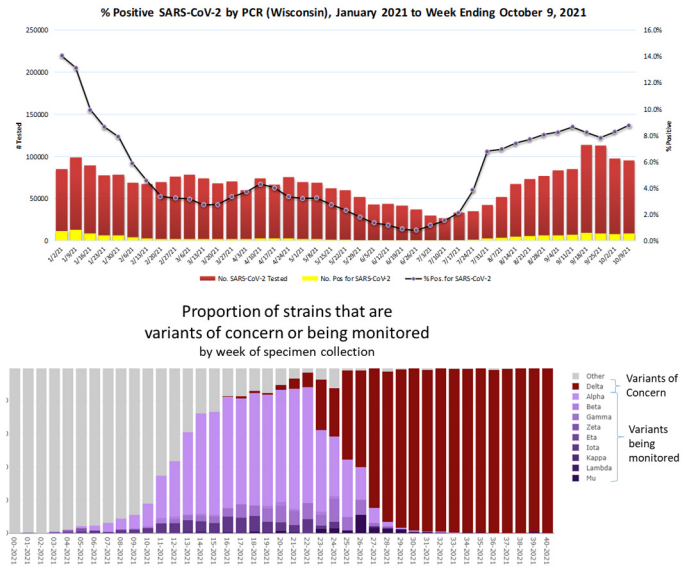
## SARS-CoV-2 Surveillance Updates

### Surveillance Data Synopsis

- RSV activity remains high in Wisconsin.
- Rhinovirus/Enterovirus activity is high and continuing to increase in Wisconsin.
- SARS-CoV-2 activity remains high in Wisconsin.
- Over 99% of the SARS-CoV-2 viruses sequenced recently are the Delta variant of concern.

### SARS-CoV-2 Update

- In Wisconsin, positivity was 8.8% of the 95,521 specimens tested by PCR and reported to WSLH.
- In the US, the 7 day average percent positivity is 5.6%.
- Wisconsin genomic sequencing data showed the Delta [B.1.617.2 and its sublineages] variant of concern was by far the predominant lineage detected (>99%).
- The WSLH sequencing dashboard is available at <https://dataportal.slh.wisc.edu/sc2dashboard>



### To enhance surveillance activities, the WSLH asks labs to please send:

1. Please send **all positive** influenza specimens for further characterization.
2. Please send **a maximum of 5** SARS-CoV-2 specimens per week.

## Other Surveillance Data-Wisconsin

### Week Ending October 9, 2021\*

Resp. Pathogen PCR	# Tested	% Positive
SARS-CoV-2	95,521	8.8
Rhinovirus/Enterovirus	1226	27.6↑
RSV	3533	23.7
Parainfluenza	1241	4.4
Adenovirus	268	<1
Human metapneumovirus	1262	<1
Influenza	6672	<1
Seasonal coronaviruses	268	0
<i>B. pertussis</i>	402	0

### Respiratory

- There continues to be high SARS-CoV-2 activity in WI.
- Rhinovirus/Enterovirus activity is high and continues to increase.

### Gastropathogens

- Sapovirus was the predominant gastropathogen reported.
- Others detected included: EPEC (11.4%), EAEC (1.4%), *Aeromonas* (1.2%), *Plesiomonas* (<1%) and *Astrovirus* (2.6%) .

### Week Ending October 9, 2021\*

GI Pathogen PCR	# Tested	% Positive
Sapovirus	154	3.2
<i>Giardia</i>	415	1.9↓
<i>Campylobacter</i>	575	1.7↓
Norovirus	440	1.4
<i>Salmonella</i>	620	1.3
<i>Cryptosporidium</i>	415	1.0↓
STEC	567	<1
<i>Shigella</i>	559	<1
Rotavirus	433	0
<i>E. coli</i> 0157	308	0
<i>Cyclospora</i>	140	0

\* On a weekly basis, participating Wisconsin clinical laboratories voluntarily report to WSLH the total number of tests performed, the method used for detection, and the number of those tests with positive results.