

Laboratory Surveillance Report

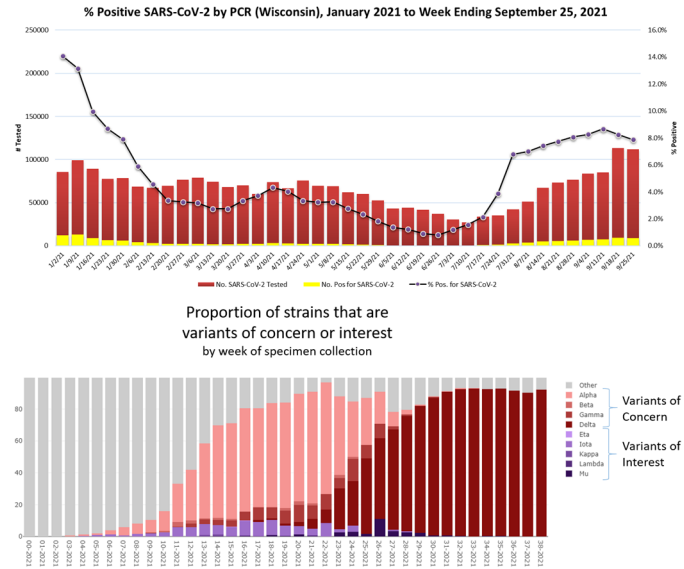
SARS-CoV-2 Surveillance Updates

Surveillance Data Synopsis

- **RSV activity remains high in Wisconsin.**
- **Rhinovirus/Enterovirus activity is high and continuing to increase in Wisconsin.**
- **SARS-CoV-2 activity remains high in Wisconsin.**
- **The Delta SARS-CoV-2 variant of concern is by far the most common lineage detected.**

SARS-CoV-2 Update

- In Wisconsin, positivity was 7.9% of the 111,651 specimens tested by PCR and reported to WSLH.
- In the US, the 7 day average percent positivity is 6.6%.
- Wisconsin genomic sequencing data showed the Delta [B.1.617.2 and its sublineages] variant of concern was by far the predominant lineage detected.
- The WSLH sequencing dashboard is available at <https://dataportal.slh.wisc.edu/sc2dashboard>



To enhance surveillance activities, the WSLH asks labs to please send:

1. Please send **all positive** influenza specimens for further characterization.
2. Please send **a maximum of 5** SARS-CoV-2 specimens per week.

Other Surveillance Data-Wisconsin

Week Ending September 25, 2021*

Resp. Pathogen PCR	# Tested	% Positive
SARS-CoV-2	111,651	7.9
RSV	3990	22.6
Rhinovirus/Enterovirus	1205	23.3↑
Parainfluenza	1259	4.3
Adenovirus	224	1.8
Human metapneumovirus	1270	<1
Influenza	6725	0
Seasonal coronaviruses	224	0
<i>B. pertussis</i>	351	0

Respiratory

- There continues to be high SARS-CoV-2 activity in WI.
- Rhinovirus/Enterovirus activity is high and continues to increase.

Gastropathogens

- *Giardia* was the predominant gastropathogen reported.
- Others detected included: EPEC (11.5%), EAEC (1.6%), ETEC (1.9%), *Aeromonas* (1.0%) and *Plesiomonas* (<1%) .

Week Ending September 25, 2021*

GI Pathogen PCR	# Tested	% Positive
<i>Giardia</i>	183	4.9↑
<i>Cryptosporidium</i>	153	3.9
<i>Campylobacter</i>	439	3.4
Norovirus	287	2.4
<i>Salmonella</i>	439	2.1
Sapovirus	143	2.1
STEC	383	1.0
Rotavirus	257	<1
<i>Shigella</i>	401	0
<i>E. coli</i> 0157	127	0
<i>Cyclospora</i>	127	0

* On a weekly basis, participating Wisconsin clinical laboratories voluntarily report to WSLH the total number of tests performed, the method used for detection, and the number of those tests with positive results.