



WSLH
PROFICIENCY
TESTING

CLINICAL PRODUCT CATALOG

2021



WSLH Proficiency Testing

LET YOUR DATA FLOW

Introducing PT Data Upload
from *WSLH Proficiency Testing*

- Save time
- Reduce data entry
- Handle PT data like patient data

[Learn More](#)

Potassium-4.6 (mmol/L) Sodium-140 (mmol/L)

Hemoglobin-13.6 (g/dL) Glucose-96 (mg/dL)

Leukocytes-7.6(10⁹/L)

Contact WSLH PT:
(800) 462-5261
ptservice@slh.wisc.edu

TABLE OF CONTENTS

4	Why WSLH PT?
8	Chemistry - Blood Gas/Oximetry
10	Chemistry - Cardiac
11	Chemistry - General
20	Coagulation
22	Hematology
27	Immunohematology - Blood Bank
28	Immunology
33	Microbiology - Bacteriology
43	Microbiology - Mycobacteriology
44	Microbiology - Mycology
46	Microbiology - Parasitology
48	Microbiology - Virology
51	Urinalysis/Microscopy/Misc.
56	Andrology
58	Online Training and Competency
61	Assayed Sample Sets
62	Additional Products
63	Shipping Schedule
68	Index



YOUR LAB, OUR MISSION

The WSLH in WSLH Proficiency Testing stands for Wisconsin State Laboratory of Hygiene, our national public health lab located in Madison, Wisconsin. As part of a national public health lab, WSLH PT provides clinical laboratories like yours reliable, affordable, and easy-to-use proficiency testing products with rapid access to results.

Questions? Contact WSLH PT Customer Service:
(800) 462-5261 | ptservice@slh.wisc.edu

OUR HISTORY

WSLH Proficiency Testing has been building a solid foundation for laboratory improvement since 1966. WSLH PT was developed by the Wisconsin State Lab of Hygiene's (WSLH) collaborative efforts to create proficiency testing programs that improved laboratory quality. Based in Madison, Wisconsin, WSLH PT continues to be part of a national public health laboratory with a UW-Madison affiliation. Today, we provide proficiency testing services across the United States and in countries around the world.

OUR COMMUNITY

Each of our proficiency testing programs has a dedicated Medical Technologist with at least 5 years of laboratory bench experience, extensive instrument knowledge and unparalleled customer service to support your laboratory's needs. WSLH Proficiency Testing is part of a national public health lab and is approved by CMS, and is accepted by the College of American Pathologists (CAP), The Joint Commission, and COLA.



WHY WSLH PT?

Reliable, affordable, & easy-to-use proficiency testing products

EASE THE BURDEN ON LAB STAFF

- PT Data Upload available
- Easy report access
- Flexible ordering at competitive prices
- Staggered shipments
- 14 day average turnaround time
- Wide array of QA options
- Customized continuing education
- AUDIT Linearity products available to order



HOW CAN WE BEST SERVE YOU?

We want to know! To find out more about WSLH PT, to enroll, or discuss options, visit wslhpt.org or contact customer service at (800) 462-5261.

Enrollment made easy

WSLH is proficiency testing *plus* unparalleled customer service

NEW CUSTOMERS

Submit a [New Customer PT Enrollment Form](#)

To order, submit a form online at wslhpt.org. Once a form is submitted, customer service will assign your lab a WSLH PT ID number and email you an enrollment confirmation. You can expect to receive a confirmation letter and a customized shipping schedule via email within 24 hours of order receipt.

Note: Experienced Medical Technologists are available Monday-Friday, 8:00am-4:30pm (CST) to assist you at (800) 462-5261.

CURRENT CUSTOMERS

Re-enrollment

Current customers will receive a new catalog and a re-enrollment packet via USPS that contains a list of programs that the lab was enrolled in the previous year. Review and edit selections where necessary and return forms for processing. You can expect to receive a confirmation letter and a customized shipping schedule via email once re-enrollment has been processed.

Changes to Active Enrollment or Account Information

To update contact or agency information, or add or drop PT enrollment at any time, please complete a [Customer Change Form](#) online at wslhpt.org. You will receive an updated enrollment confirmation reflecting the requested changes.

SHIPPING INFORMATION

WSLHPT provides a customized shipping schedule with your enrollment confirmation. Customers with a valid email address under "Shipping Information" on the Enrollment Form will receive an email notification for each shipment. Most packages will arrive within 2 days of the scheduled ship date. Overnight shipments are designated on the shipping calendar. Your facility must make arrangements to accept delivery and have the package routed immediately to the appropriate location for proper handling and storage.

If you do not receive samples within 2 days of the scheduled ship date, please contact WSLH PT at (800) 462-5261. **Please notify WSLH PT in advance of any address changes.** Import permits or customs forms must be provided by international customers at least 30 calendar days prior to the first scheduled shipment.

CANCELLATION OF PRODUCTS

To cancel products, complete a [Customer Change Form](#) online at wslhpt.org. All cancellations must be submitted in writing at least 30 days prior to a scheduled shipment date. A credit will be applied to your account, if appropriate. The annual processing fee is non-refundable. Refund requests will be handled on a case by case basis by the accounts receivable department.

To assure participation in all shipments, enrollment and order forms must be received by December 1st. Contact us for sample availability after December 1.

A NOTE FOR CAP ACCREDITED CUSTOMERS

WSLH PT is accepted by the CAP Laboratory Accreditation Program (LAP) to fulfill PT requirements for most analytes and procedures. **Analytes and procedures not accepted are indicated in this catalog with an asterisk (*) by program.**

Laboratories can determine if enrollment in PT is required by reviewing the information on their CAP Laboratory Activity Menu report. Current and potential customers should carefully review the information before placing their order with WSLH PT.



PROF
PRO

PRIMARY PRODUCTS include one set of samples and reporting for one set of results per shipment unless otherwise specified. **Analytes and procedures listed under the Regulated column are regulated under CLIA '88. Add-on products may only be ordered in conjunction with specific primary products.**

QUALITY EVALUATION (QE) PRODUCTS include one set of samples and reporting for one set of results per shipment unless otherwise specified. These products can only be ordered in conjunction with a corresponding Primary product and may be ordered in multiples. Result sets reported for any QE products may be ordered for QA purposes, to test a secondary method, or for additional sample volume. Contact WSLH PT for QE products not listed.

ADDITIONAL PRODUCTS include Assayed Sample Sets, AUDIT MicroControls Calibration Verification/Linearity, CEQAL Accuracy Monitoring Products, evaluation sets, off-schedule proficiency testing, and online competency / training with continuing education credits.

PROFICIENCY TESTING PRODUCTS

NEW FOR 2021

PAGE	PROGRAM
32	SARS-CoV-2 Serology (SCA)
48	SARS-CoV-2 analyte now included in Respiratory Multiplex (RP)
49	SARS-CoV-2 Antigen (CVW)
49	SARS-CoV-2 Molecular - 5 Samples (CM)
49	SARS-CoV-2 Molecular - 3 Samples (CMW)

CHEMISTRY

▲ Blood Gas / Oximetry

Blood Gases / Electrolytes / Metabolites (BG)

3mL aqueous samples compatible with most blood gas instruments including ABL, Cobas, EPOC, GEM, i-STAT, IRMA, OPTI, RAPIDLab, RAPIDPoint and OTHER systems.

Item PT01050

QE Product Item PT01060

	CLIA REGULATED	UNREGULATED
ANALYTES	<ul style="list-style-type: none"> Chloride Creatinine Glucose pCO₂ pH 	<ul style="list-style-type: none"> pO₂ Potassium Sodium Urea nitrogen (BUN)
		<ul style="list-style-type: none"> Carbon dioxide, total Ionized calcium Ionized magnesium * Lactate

* Analyte(s) not yet accepted by the CAP Laboratory Accreditation Program

2021 Ship Dates March 1 July 5 November 1 Three shipments per year
Five samples per shipment

Blood Gas Hemoglobin / Hematocrit (BGH), add-on to BG

2.5mL aqueous samples. This product can only be ordered in conjunction with BG above. IL GEM and ABL90 FLEX users should report these analytes under the CO-Oximetry product below.

Add-on to BG Item PT01570

QE Product Item PT01580

	CLIA REGULATED	UNREGULATED
ANALYTES	<ul style="list-style-type: none"> Hematocrit Hemoglobin 	

2021 Ship Dates March 1 July 5 November 1 Three shipments per year
Five samples per shipment

i-STAT Chemistries PLUS (BGB)

2.5mL BLUE aqueous samples intended for use on i-STAT systems. Includes Hemoglobin and Hematocrit. Single set of five samples.

Item PT01345

QE Product Item PT01347

	CLIA REGULATED	UNREGULATED
ANALYTES	<ul style="list-style-type: none"> Chloride Creatinine Glucose Hematocrit Hemoglobin pCO₂ 	<ul style="list-style-type: none"> pH pO₂ Potassium Sodium Urea nitrogen (BUN)
		<ul style="list-style-type: none"> Carbon dioxide, total Ionized calcium Lactate

2021 Ship Dates March 1 July 5 November 1 Three shipments per year
Five samples per shipment

CO-Oximetry (CO)

Item PT01330

QE Product Item PT01340

2mL samples of stabilized hemoglobin solution.

	CLIA REGULATED	UNREGULATED
ANALYTES	<ul style="list-style-type: none"> • Hematocrit • Hemoglobin, total 	<ul style="list-style-type: none"> • Carboxyhemoglobin • Oxyhemoglobin • Methemoglobin

2021 Ship Dates	March 1	July 5	November 1	Three shipments per year Five samples per shipment
------------------------	---------	--------	------------	---

i-STAT Chemistries - Waived Methods (BGW)

Item PT01400

QE Product Item PT01425

2.5mL aqueous samples intended for use on waived systems such as the i-STAT Crea, 6+, EC4+, E3+, or G cartridges. Laboratories using non-waived methods should refer to BGB or BG products on prior page.

	CLIA REGULATED	UNREGULATED
ANALYTES		<ul style="list-style-type: none"> • Chloride • Creatinine • Glucose • Hematocrit • Hemoglobin
		<ul style="list-style-type: none"> • Potassium • Sodium • Urea nitrogen (BUN)

2021 Ship Dates	March 1	July 5	Two shipments per year Three samples per shipment
------------------------	---------	--------	--

CHEMISTRY

▲ Cardiac

Cardiac Markers - 5 Samples (IE)

1.5mL liquid samples. Compatible with automated methods such as Abbott i-STAT, Alere Triage, Architect, Beckman Coulter, Roche, Siemens, and Vitros.

	CLIA REGULATED	UNREGULATED	
ANALYTES	<ul style="list-style-type: none"> • CK-MB • CK, total 	<ul style="list-style-type: none"> • BNP • D-dimer (Alere Triage only) • hs-CRP 	<ul style="list-style-type: none"> • Myoglobin • NT-proBNP • Troponin I • Troponin T

2021 Ship Dates	February 22	May 17	September 27	Three shipments per year Five samples per shipment
------------------------	-------------	--------	--------------	---

Item PT01260

QE Product Item PT01270

NOTE: For CRP methods screening for non-specific inflammatory disease, see XP product on page 28.

D-dimer in this module is for laboratories using the Alere Triage. Other instrumentation, see DD product on page 20.

CAP accredited labs must test five samples for non-waived methods except for D-dimer, Myoglobin, and hs-CRP.

Cardiac Markers - 3 Samples (TM)

1.5mL liquid samples. Compatible with automated methods such as Abbott i-STAT, Alere Triage, Architect, Beckman Coulter, Roche, Siemens, and Vitros.

	CLIA REGULATED	UNREGULATED	
ANALYTES		<ul style="list-style-type: none"> • BNP • D-dimer (Alere Triage only) • hs-CRP 	<ul style="list-style-type: none"> • Myoglobin • NT-proBNP • Troponin I • Troponin T

2021 Ship Dates	May 17	September 27	Two shipments per year Three samples per shipment
------------------------	--------	--------------	--

Item PT01230

QE Product Item PT01255

NOTE: For CRP methods screening for non-specific inflammatory disease, see XP product on page 28.

D-dimer in this module is for laboratories using the Alere Triage. Other instrumentation, see DD product on page 20.

CAP accredited labs must test five samples for non-waived methods except for D-dimer, Myoglobin, and hs-CRP.

Alcohol/Ketones, serum (AM)

2mL liquid samples. Beta-hydroxybutyrate is compatible with instrumentation using Stanbio reagent as well as with POC meters such as Abbott Xceed Pro and Stanbio STAT-site M.

Item PT01000
QE Product Item PT01010

	CLIA REGULATED	UNREGULATED
ANALYTES	<ul style="list-style-type: none"> Alcohol (ethanol) 	<ul style="list-style-type: none"> Acetone (qualitative) Acetone (semi-quantitative) Beta-hydroxybutyrate *

* Analyte(s) not yet accepted by the CAP Laboratory Accreditation Program

2021 Ship Dates	January 25	April 26	August 30	Three shipments per year Five samples per shipment
------------------------	------------	----------	-----------	---

Ammonia (NH)

2mL liquid samples.

Item PT01020
QE Product Item PT01045

	CLIA REGULATED	UNREGULATED
ANALYTES		<ul style="list-style-type: none"> Ammonia

2021 Ship Dates	February 22	September 27	Two shipments per year Three samples per shipment
------------------------	-------------	--------------	--

Bilirubin - Elevated (NB)

1mL liquid samples containing elevated levels of bilirubin similar to those found in neonates and liver disease.

Item PT01430
QE Product Item PT01440

	CLIA REGULATED	UNREGULATED
ANALYTES	<ul style="list-style-type: none"> Bilirubin, total 	<ul style="list-style-type: none"> Bilirubin, direct

2021 Ship Dates	February 22	May 17	September 27	Three shipments per year Five samples per shipment
------------------------	-------------	--------	--------------	---

CHEMISTRY

▲ General

Blood Lead - 5 Samples (PB)

1mL whole blood samples.

Item PT01080
QE Product Item PT01085

	CLIA REGULATED	UNREGULATED
ANALYTES	• Blood lead	

2021 Ship Dates March 22 June 21 November 15 Three shipments per year
Five samples per shipment

Blood Lead - 3 Samples (BL)

1mL whole blood samples.

Item PT01070
QE Product Item PT01077

	CLIA REGULATED	UNREGULATED
ANALYTES		• Blood lead

2021 Ship Dates March 22 November 15 Two shipments per year
Three samples per shipment

Body Fluid Chemistry (PC)

3mL liquid samples intended to simulate pleural, peritoneal, and miscellaneous body fluids.

Item PT01120
QE Product Item PT01145

NOTE: For spinal fluid, see SF product on page 16. For urine, see CU on page 18.

	CLIA REGULATED	UNREGULATED
ANALYTES		<ul style="list-style-type: none"> • Albumin • Amylase • Cholesterol • Creatinine • Glucose • LDH • pH (quantitative) • Protein • Triglycerides

2021 Ship Dates February 22 September 27 Two shipments per year
Three samples per shipment

Body Fluid pH - Visual (PH)

1mL liquid samples intended for pH measurement by color comparison methods including amniotic and miscellaneous body fluid pH measurement. Samples are compatible with non-nitrazine and nitrazine test strips, swabs, and paper.

Item PT01150
QE Product Item PT01175

NOTE: For urine pH, see UR product on page 54.

	CLIA REGULATED	UNREGULATED
ANALYTES		<ul style="list-style-type: none"> • pH (color comparison) • pH interpretation (ruptured, not ruptured)

2021 Ship Dates February 22 September 27 Two shipments per year
Three samples per shipment

Chemistry - Waived Methods (WC)

5mL liquid samples intended for instruments using waived cartridges such as CardioChek (reflectance test strips only), Cholestech LDX, Roche Accutrend, and Abaxis Piccolo (waived). Laboratories using Abaxis Piccolo non-waived cartridges should refer to the CET product on the next page.

Item PT01282

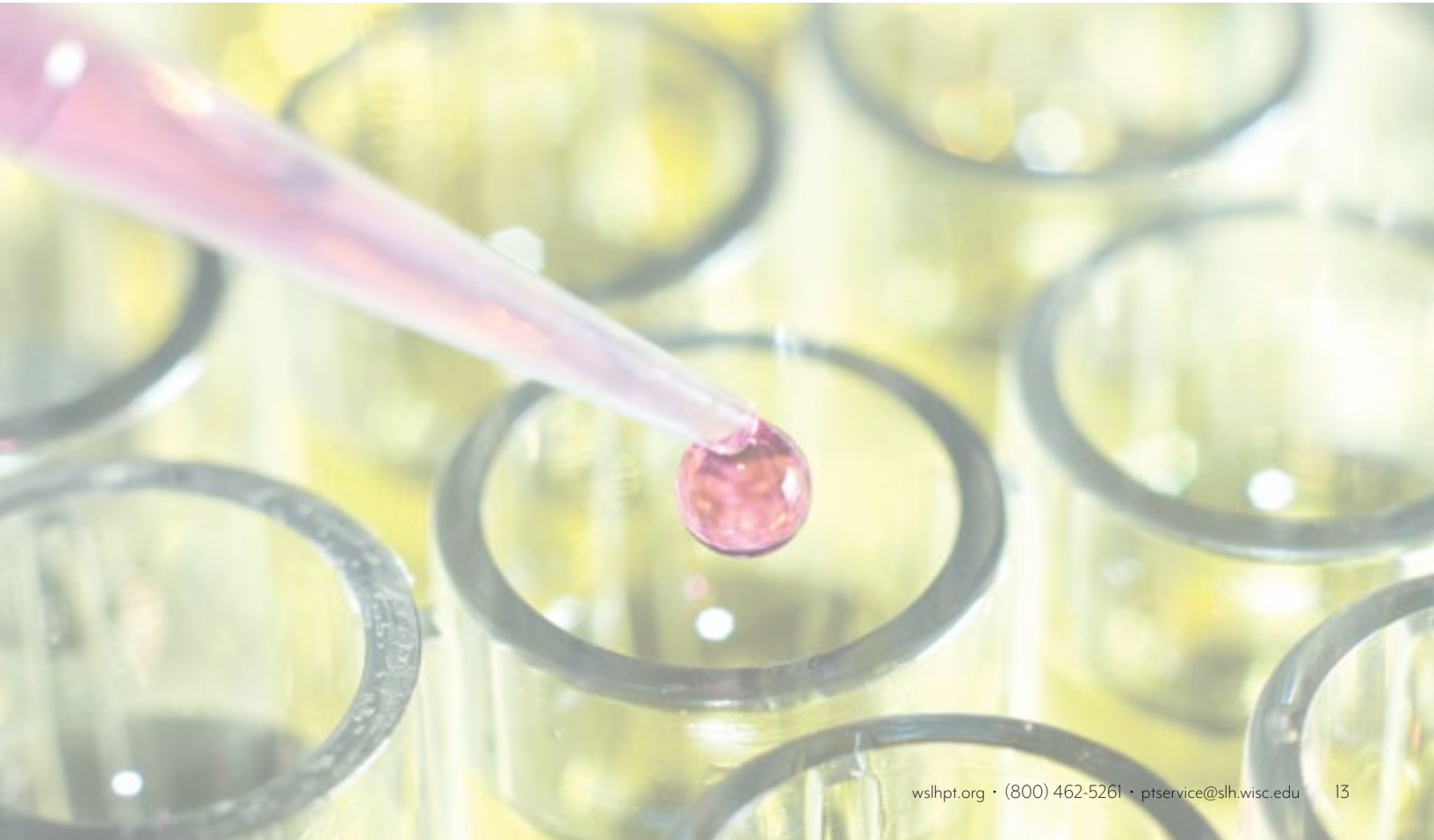
QE Product Item PT01284

NOTE: For i-STAT chemistry waived cartridges, see BGW product on page 9.

For CardioChek eGLU (glucose electrochemical test strips), see WBG 3 sample product on page 15.

	CLIA REGULATED	UNREGULATED
ANALYTES		<ul style="list-style-type: none"> • ALT • Albumin • ALKP • Amylase • AST • Bilirubin, total • Calcium, total • CO₂ • Chloride • Cholesterol, HDL • Cholesterol, LDL (calculated) • Cholesterol, total • Creatine Kinase (CK) • Creatinine • GGT • Glucose • Phosphorus • Potassium • Protein, total • Sodium • Triglycerides • Urea nitrogen (BUN) • Uric acid

2021 Ship Dates January 25 August 30 Two shipments per year
 Three samples per shipment



Glucose Whole Blood - 5 Samples (WBG)

Whole blood samples intended for waived glucose meters. Samples are compatible with most blood glucose meters used for ancillary/point of care testing. Samples are NOT compatible with HemoCue Glucose 201 systems. See HWG product below.

CLIA REGULATED		UNREGULATED	
ANALYTES			• Whole Blood Glucose
2021 Ship Dates	April 5	October 18	Two shipments per year Five samples per shipment

Item PT01886
QE Product Item PT01888
Additional Samples Item PT01890

NOTE: QE product includes one set of samples and reporting for up to 20 result sets. Additional Samples product includes one set of samples and no additional reporting.

Glucose Whole Blood - 3 Samples (WBG)

Whole blood samples intended for waived glucose meters. Samples are compatible with most blood glucose meters used for ancillary/point of care testing. Samples are NOT compatible with HemoCue Glucose 201 systems. See HWG product below.

CLIA REGULATED		UNREGULATED	
ANALYTES			• Whole Blood Glucose
2021 Ship Dates	April 5	October 18	Two shipments per year Three samples per shipment

Item PT01880
QE Product Item PT01895
Additional Samples Item PT01884

NOTE: QE product includes one set of samples and reporting for up to 20 result sets. Additional Samples product includes one set of samples and no additional reporting.

Glucose/Hemoglobin - HemoCue - Waived Methods (HWG)

Whole blood samples intended for use with HemoCue systems. Also compatible with HemoPoint H2 and other waived hemoglobin systems. Samples are NOT compatible with HemoCue Hb 801. See HWH product below.

CLIA REGULATED		UNREGULATED	
ANALYTES			• Whole Blood Glucose • Hemoglobin
2021 Ship Dates	April 5	October 18	Two shipments per year Three samples per shipment

Item PT01450
QE Product Item PT01475

Hemoglobin - HemoCue Hb 801 - Waived (HWH)

Whole blood samples intended for use with HemoCue Hb 801.

CLIA REGULATED		UNREGULATED	
ANALYTES			• Hemoglobin *
2021 Ship Dates	April 5	October 18	Two shipments per year Three samples per shipment

Item PT01455
QE Product Item PT01465

* Analyte(s) not yet accepted by the CAP Laboratory Accreditation Program

CHEMISTRY

▲ General

Hemoglobin A1c (Glycohemoglobin) - 5 Samples (GHR)

1mL whole blood samples. These samples are NOT compatible with the Afinion analyzer. See GHA product below.

	CLIA REGULATED	UNREGULATED
ANALYTES		• Hemoglobin A1c
2021 Ship Dates	January 25 April 26	August 30 Three shipments per year Five samples per shipment

Item PT01524
QE Product Item PT01529

CAP accredited labs using a non-waived method must test five samples for glycohemoglobin.

Hemoglobin A1c (Glycohemoglobin) - 3 Samples (GH)

1mL whole blood samples. These samples are NOT compatible with the Afinion analyzer. See GHA product below.

	CLIA REGULATED	UNREGULATED
ANALYTES		• Hemoglobin A1c
2021 Ship Dates	February 22 September 27	Two shipments per year Three samples per shipment

Item PT01500
QE Product Item PT01522

CAP accredited labs using a non-waived method must test five samples for glycohemoglobin.

Hemoglobin A1c (Glycohemoglobin) - Afinion (GHA)

0.5mL whole blood samples intended for use with the Afinion analyzer.

	CLIA REGULATED	UNREGULATED
ANALYTES		• Hemoglobin A1c
2021 Ship Dates	February 22 September 27	Two shipments per year Three samples per shipment

Item PT01530
QE Product Item PT01555

Immunoassay Chemistry (CS)

5mL liquid samples.

	CLIA REGULATED	UNREGULATED
ANALYTES		<ul style="list-style-type: none"> • CEA • DHEA Sulfate * • Estradiol • Ferritin • Folate • FSH • Homocysteine • LH
2021 Ship Dates	February 22 September 27	<ul style="list-style-type: none"> • Prealbumin • Progesterone • Prolactin • PSA, total • Testosterone, total • Transferrin • Vitamin B12
2021 Ship Dates	February 22 September 27	Two shipments per year Three samples per shipment

1-5 Analytes Item PT01680
6+ Analytes Item PT01695
QE Product 1-5 Analytes Item PT01692
QE Product 6+ Analytes Item PT01707

* Analyte(s) not yet accepted by the CAP Laboratory Accreditation Program

Immunoassay Chemistry B (CSB)

Lyophilized serum samples. A 2.0mL class A volumetric pipette and reagent-grade water are recommended for reconstitution.

Item PT01710
QE Product Item PT01715

	CLIA REGULATED	UNREGULATED
ANALYTES		<ul style="list-style-type: none"> • 25-OH Vitamin D, total • C-peptide * • Insulin * • PTH, intact

* Analyte(s) not yet accepted by the CAP Laboratory Accreditation Program

2021 Ship Dates February 22 September 27
Two shipments per year
Three samples per shipment

Procalcitonin (PCT)

Lyophilized serum samples. A 2.0mL class A volumetric pipette and reagent-grade water are recommended for reconstitution.

Item PT01900
QE Product Item PT01905

	CLIA REGULATED	UNREGULATED
ANALYTES		<ul style="list-style-type: none"> • Procalcitonin *

* Analyte(s) not yet accepted by the CAP Laboratory Accreditation Program

2021 Ship Dates February 22 September 27
Two shipments per year
Three samples per shipment

SHBG and Testosterone (SHBG)

Lyophilized serum samples. A 2.0mL class A volumetric pipette and reagent-grade water are recommended for reconstitution.

Item PT01970

	CLIA REGULATED	UNREGULATED
ANALYTES		<ul style="list-style-type: none"> • Sex hormone-binding globulin * • Testosterone, bioavailable • Testosterone, total • Testosterone, free *

* Analyte(s) not yet accepted by the CAP Laboratory Accreditation Program

2021 Ship Dates February 22 September 27
Two shipments per year
Three samples per shipment

Spinal Fluid Chemistry (SF)

2mL liquid samples.

Item PT01720
Add-on to PC Product Item PT01722
QE Product Item PT01745

	CLIA REGULATED	UNREGULATED
ANALYTES		<ul style="list-style-type: none"> • Chloride • Glucose • Lactic acid • LDH • Potassium * • Protein • Sodium *

* Analyte(s) not yet accepted by the CAP Laboratory Accreditation Program

2021 Ship Dates February 22 September 27
Two shipments per year
Three samples per shipment

CHEMISTRY

▲ General

Tumor Markers (MT)

2mL liquid samples.

	CLIA REGULATED	UNREGULATED
ANALYTES		<ul style="list-style-type: none"> • Beta-2 Microglobulin * • CA 125 • CA 15-3 *
		<ul style="list-style-type: none"> • CA 19-9 * • CA 27.29 * • PSA, free *

2021 Ship Dates

February 22

September 27

Two shipments per year
Three samples per shipment

Item PT01750

QE Product Item PT01775

NOTE: CEA and PSA, total are available under the Immunoassay Chemistry (CS) product on page 16.

* Analyte(s) not yet accepted by the CAP Laboratory Accreditation Program

Urine Chemistry (CU)

10mL liquid samples. These samples are NOT compatible with the Afinion analyzer. See ACR product below.

	CLIA REGULATED	UNREGULATED
ANALYTES		<ul style="list-style-type: none"> • A/C ratio, quantitative • A/C ratio, semi-quantitative • Amylase • Calcium • Chloride • Creatinine, quantitative • Creatinine, semi-quantitative * • Glucose
		<ul style="list-style-type: none"> • Magnesium • Microalbumin, quantitative • Microalbumin, semi-quantitative * • Osmolality • Phosphorus • Potassium • Protein • Sodium • Urea nitrogen • Uric acid

2021 Ship Dates

February 22

September 27

Two shipments per year
Three samples per shipment

1-3 Analytes Item PT01780

4-10 Analytes Item PT01786

11+ Analytes Item PT01792

QE Product 1-3 Analytes Item PT01785

QE Product 4-10 Analytes Item PT01791

QE Product 11+ Analytes Item PT01797

* Analyte(s) not yet accepted by the CAP Laboratory Accreditation Program

Urine Chemistry - Afinion (ACR)

3mL liquid samples intended for use with the Afinion analyzer.

	CLIA REGULATED	UNREGULATED
ANALYTES		<ul style="list-style-type: none"> • A/C ratio • Microalbumin
		<ul style="list-style-type: none"> • Urine Creatinine

2021 Ship Dates

February 22

September 27

Two shipments per year
Three samples per shipment

Item PT01960

Urine Drug Adulteration Test (UDA)

10mL liquid samples for use with urine adulterant detection methods.

Item PT01950
QE Product Item PT01955

ANALYTES	CLIA REGULATED	UNREGULATED	
			<ul style="list-style-type: none"> • Creatinine • Nitrites • Oxidants

2021 Ship Dates	January 25	April 26	August 30	Three shipments per year Two samples per shipment
------------------------	------------	----------	-----------	--

Urine Drug Screen (UD)

10mL liquid samples intended for the qualitative detection of drugs using urine immunoassay screening procedures.

Item PT01810
QE Product Item PT01835

ANALYTES	CLIA REGULATED	UNREGULATED	
			<ul style="list-style-type: none"> • Acetaminophen • 6-AM (6-Acetylmorphine) • Amphetamines • Barbiturates • Benzodiazepines • Buprenorphine • Cannabinoids (THC) • Carisoprodol * • Cocaine metabolites • Cotinine • EDDP * • Ethanol (Alcohol) • Fentanyl *

2021 Ship Dates	January 25	April 26	August 30	Three shipments per year Two samples per shipment
------------------------	------------	----------	-----------	--

* Analyte(s) not yet accepted by the CAP Laboratory Accreditation Program

Urine Drug Screen - Ethyl Glucuronide (ETG)

5mL liquid samples intended for the qualitative detection of EtG in urine.

Item PT01980

ANALYTES	CLIA REGULATED	UNREGULATED

2021 Ship Dates	January 25	April 26	August 30	Three shipments per year Two samples per shipment
------------------------	------------	----------	-----------	--



COAGULATION

COAGULATION

Activated Clotting Time (CT)

Three lyophilized samples with paired diluents, calcium chloride solutions (activator), and method-differentiated handling instructions. Compatible with HEMOCHRON, i-STAT, HemoTec, Medtronic HMS and OTHER methods.

Item PT02030
QE Product Item PT02052

	CLIA REGULATED	UNREGULATED
ANALYTES		<ul style="list-style-type: none"> Activated clotting time (ACT)

2021 Ship Dates	February 15	September 13	Two shipments per year Three samples per shipment
------------------------	-------------	--------------	--

Coagulation - Basic (CA)

Lyophilized plasma samples. Use of a 1.0mL class A volumetric pipette and reagent-grade water are recommended for reconstitution. NOT compatible with whole blood systems (i-STAT, ITC, CoaguChek, or Coag-Sense). INR Calculation "dry exercise" is available for CAP-accredited labs.

Item PT02060
QE Product Item PT02070

	CLIA REGULATED	UNREGULATED
ANALYTES	<ul style="list-style-type: none"> Activated partial thromboplastin time (APTT) 	<ul style="list-style-type: none"> Protime (PT) Fibrinogen INR

2021 Ship Dates	February 15	June 7	September 13	Three shipments per year Five samples per shipment
------------------------	-------------	--------	--------------	---

D-dimer (DD)

1.0mL liquid samples. Compatible with most D-dimer kits including Sysmex CA and CS, Alere Triage, Stago, and OTHER methods. Educational D-dimer interpretation available.

Item PT02080
QE Product Item PT02105

NOTE: Customers using Alere Triage for cardiac markers, see IE or TM product on page 10.

	CLIA REGULATED	UNREGULATED
ANALYTES		<ul style="list-style-type: none"> D-dimer, quantitative

2021 Ship Dates	February 15	September 13	Two shipments per year Three samples per shipment
------------------------	-------------	--------------	--

COAGULATION

Protime / INR - Whole Blood CoaguChek XS (PXS)

Lyophilized samples intended for non-waived Roche CoaguChek XS systems. Also available to waived system users wanting more challenges per year. Waived system users reporting only INR may consider CXSW product.

Item PT02350
QE Product Item PT02360

ANALYTES	CLIA REGULATED	UNREGULATED
	• Protime (PT)	• INR
2021 Ship Dates	February 15 June 7	September 13 Three shipments per year Five samples per shipment

INR - CoaguChek - Waived Methods (CXSW)

Lyophilized samples for CoaguChek XS or CoaguChek XS Plus (waived use).

Item PT02320
QE Product Item PT02345

ANALYTES	CLIA REGULATED	UNREGULATED
		• INR
2021 Ship Dates	February 15 September 13	Two shipments per year Three samples per shipment

Protime / INR - Whole Blood, i-STAT and Coag-Sense (PRC)

Lyophilized samples intended for i-STAT systems; most i-STAT users must report both Protime and INR for proficiency testing purposes. Also compatible with Coag-Sense systems where non-waived users must report both Protime and INR. Coag-Sense waived system users reporting only INR may consider CW product.

Item PT02370
QE Product Item PT02380

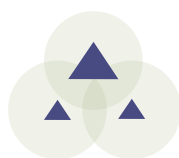
ANALYTES	CLIA REGULATED	UNREGULATED
	• Protime (PT)	• INR
2021 Ship Dates	February 15 June 7	September 13 Three shipments per year Five samples per shipment

INR - Coag-Sense - Waived Methods (CW)

Lyophilized samples intended for Coag-Sense (waived use).

Item PT02310
QE Product Item PT02315

ANALYTES	CLIA REGULATED	UNREGULATED
		• INR
2021 Ship Dates	February 15 September 13	Two shipments per year Three samples per shipment



HEMATOLOGY

Hematology samples are instrument-specific. Please use the table below to choose the correct sample/instrument combination.

	CBC OR CBC WITH AUTO DIFF						RETICULOCYTES			
	AF1	AF2	AF3	AF4	AF5	AS	AT	RT	RTB	RTS
Abbott CELL-DYN 1400, 1600, 1700, 1800, Emerald							X			
Abbott CELL-DYN 3000, 3200, 3500, 3700, 4000, Ruby, Sapphire	X									
Abbott Sapphire								X		
Abacus 5	X									
ABX Micros							X			
ABX Pentra 60, 80, 120		X								
ABX Pentra XLR								X		
Beckman Coulter AcT 5 diff		X								
Beckman Coulter AcT 8/10, AcT diff/diff2							X			
Beckman Coulter DxH 500 (Includes 520, 560)			X							
Beckman Coulter DxH600, DxH800, DxH900, HmX, LH 500, LH700 series, MAXM				X					X	
Manual Reticulocyte methods								X		
Medonic M series							X			
Siemens ADVIA 120/2120									X	
Siemens ADVIA 560	X									
Sysmex XS1000i					X					
Sysmex XE series, XT series, XN series, XN-L series					X					X
Sysmex KX-21N, pocH 100i, XP-300						X				

HEMATOLOGY

Hematology - Comprehensive (AF)

Whole blood samples for automated instruments with 5-6 part differential.

	CLIA REGULATED	UNREGULATED
ANALYTES	<ul style="list-style-type: none"> Erythrocyte count (RBC) Hematocrit Hemoglobin 	<ul style="list-style-type: none"> Leukocyte count (WBC) Platelet count WBC differential, automated MCV IG% (AF5 only) IG# (AF5 only) MPV (AF4 and AF5 only) NRBC# (AF4 and AF5 only) RDW (AF4 and AF5 only)

2021 Ship Dates	February 15	June 7	September 13	Three shipments per year Five samples per shipment
------------------------	-------------	--------	--------------	---

- AF1 Item PT02230
- QE Product AF1 Item PT02240
- AF2 Item PT02250
- QE Product AF2 Item PT02260
- AF3 Item PT02270
- QE Product AF3 Item PT02280
- AF4 Item PT02285
- QE Product AF4 Item PT02286
- AF5 Item PT02290
- QE Product AF5 Item PT02300

NOTE: Item numbers are instrument-specific.
See Instrument Table on page 22.

HEMATOLOGY

Hematology - Limited Sysmex (AS)

Whole blood samples for Sysmex instruments with 2-3 part differential.

	CLIA REGULATED	UNREGULATED
ANALYTES	<ul style="list-style-type: none"> Erythrocyte count (RBC) Hematocrit Hemoglobin 	<ul style="list-style-type: none"> Leukocyte count (WBC) Platelet count WBC differential, automated MCV

2021 Ship Dates	February 15	June 7	September 13	Three shipments per year Five samples per shipment
------------------------	-------------	--------	--------------	---

- Item PT02200
- QE Product Item PT02210

NOTE: See Instrument Table on page 22.

Hematology - Limited (AT)

Whole blood samples for automated instruments with 2-3 part differential or no differential.

	CLIA REGULATED	UNREGULATED
ANALYTES	<ul style="list-style-type: none"> Erythrocyte count (RBC) Hematocrit Hemoglobin 	<ul style="list-style-type: none"> Leukocyte count (WBC) Platelet count WBC differential, automated MCV

2021 Ship Dates	February 15	June 7	September 13	Three shipments per year Five samples per shipment
------------------------	-------------	--------	--------------	---

- 1-6 Analytes Item PT02180
- 7+ Analytes Item PT02190
- QE Product 1-6 Analytes Item PT02185
- QE Product 7+ Analytes Item PT02195

NOTE: See Instrument Table on page 22.

HEMATOLOGY

Hematology - Cell Identification (XI)

Seven images (paper and online versions).

Item PT02220

NOTE: For Laboratories reporting both automated differential and cell identification, only the automated differential score will be transmitted to accreditation agencies.

	CLIA REGULATED	UNREGULATED
ANALYTES	• Cell identification	• Cell identification, educational

2021 Ship Dates	February 15	June 7	September 13	Three shipments per year Five regulated and two educational challenges per shipment
------------------------	-------------	--------	--------------	--

Reticulocytes - Manual and Some Automated (RT)

Whole blood samples for manual methods and some automated instruments.

Item PT02420

QE Product Item PT02425

NOTE: See Instrument Table on page 22.

	CLIA REGULATED	UNREGULATED
ANALYTES		• Reticulocyte count, percent

2021 Ship Dates	February 15	September 13	Two shipments per year Three samples per shipment
------------------------	-------------	--------------	--

Reticulocytes - Beckman Coulter (RTB)

Whole blood samples for Beckman Coulter instruments.

Item PT02442

QE Product Item PT02444

NOTE: See Instrument Table on page 22.

	CLIA REGULATED	UNREGULATED
ANALYTES		• IRF • Reticulocyte count, absolute • Reticulocyte count, percent

2021 Ship Dates	February 15	September 13	Two shipments per year Three samples per shipment
------------------------	-------------	--------------	--

Reticulocytes - Sysmex (RTS)

Whole blood samples for Sysmex instruments.

Item PT02432

QE Product Item PT02434

NOTE: See Instrument Table on page 22.

	CLIA REGULATED	UNREGULATED
ANALYTES		• IRF • Reticulocyte count, absolute • Reticulocyte count, percent • Re-He

2021 Ship Dates	February 15	September 13	Two shipments per year Three samples per shipment
------------------------	-------------	--------------	--

HEMATOLOGY

Erythrocyte Sedimentation Rate (ESR) Instruments

ESR samples are instrument specific. Please use the table below to choose the correct sample/instrument combination.

INSTRUMENTS	SR	SRI	SRA
		X	
			X
	X		

Sedimentation Rate (SR)

Whole blood samples intended for manual and automated erythrocyte sedimentation rate methods.

ANALYTES	CLIA REGULATED	UNREGULATED

2021 Ship Dates April 5 October 18 Two shipments per year
Three samples per shipment

Item PT02450
QE Product Item PT02465
NOTE: See Instrument Table above.

Sedimentation Rate - iSED and Alifax (SRI)

Whole blood samples intended for the iSED ESR systems and Alifax.

ANALYTES	CLIA REGULATED	UNREGULATED

2021 Ship Dates April 5 October 18 Two shipments per year
Three samples per shipment

Item PT02520
QE Product Item PT02525
NOTE: See Instrument Table above.

Sedimentation Rate - Polymedco Sedimat 15 and ESR Stat Plus (SRA)

Whole blood samples intended for Polymedco Sedimat 15 and ESR Stat Plus instruments.

ANALYTES	CLIA REGULATED	UNREGULATED

2021 Ship Dates April 5 October 18 Two shipments per year
Three samples per shipment

Item PT02470
QE Product Item PT02485
NOTE: See Instrument Table above.

HEMATOLOGY

Fetal Red Cell Detection (HBF)

1mL whole blood samples intended for fetal maternal hemorrhage detection methods. Compatible with fetal rosette screen (qualitative) and Kleihauer-Betke stain (quantitative).

Item PT04350
QE Product Item PT04355

* Analyte(s) not yet accepted by the CAP Laboratory Accreditation Program

	CLIA REGULATED	UNREGULATED
ANALYTES		<ul style="list-style-type: none">• Fetal Screen (qualitative) *• Hemoglobin F (quantitative) *

2021 Ship Dates April 26 November 1 Two shipments per year
Three samples per shipment

Hematocrit - Waived Methods (HW)

Liquid whole blood samples intended for use with waived hematocrit methods.

Item PT02150
QE Product Item PT02175

	CLIA REGULATED	UNREGULATED
ANALYTES		<ul style="list-style-type: none">• Hematocrit

2021 Ship Dates April 5 October 18 Two shipments per year
Three samples per shipment

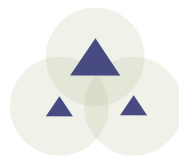
Sickle Cell Screen (SK)

Stabilized RBC samples compatible with solubility and electrophoresis methods.

Item PT02490
QE Product Item PT02515

	CLIA REGULATED	UNREGULATED
ANALYTES		<ul style="list-style-type: none">• Sickle cell screen

2021 Ship Dates April 5 October 18 Two shipments per year
Three samples per shipment



IMMUNOHEMATOLOGY

▲ Blood Bank

Blood Bank (Immunohematology) - Comprehensive (AB)

Five bar-coded 4mL whole blood samples and one 2mL whole blood donor sample for compatibility testing. Intended for use with manual and automated methods.

Item PT04120
QE Product Item PT04130

NOTE: Samples are NOT compatible with Olympus PK7200/7300 instruments.

	CLIA REGULATED	UNREGULATED
ANALYTES	<ul style="list-style-type: none"> • ABO group • Rh (D) typing • Unexpected antibody detection 	<ul style="list-style-type: none"> • Compatibility testing • Antibody identification

2021 Ship Dates March 1 June 14 October 4 Three shipments per year
Five samples per shipment

Blood Bank (Immunohematology) - Limited (AB)

Five bar-coded 4mL whole blood samples. Intended for use with manual and automated methods.

Item PT04140
QE Product Item PT04150

NOTE: Samples are NOT compatible with Olympus PK7200/7300 instruments.

	CLIA REGULATED	UNREGULATED
ANALYTES	<ul style="list-style-type: none"> • ABO group 	<ul style="list-style-type: none"> • Rh (D) typing

2021 Ship Dates March 1 June 14 October 4 Three shipments per year
Five samples per shipment

Blood Bank Direct Antiglobulin Test (DAT)

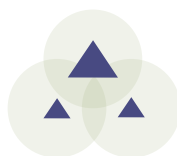
Three bar-coded 2mL whole blood samples for Direct Antiglobulin Testing. Intended for use with manual and automated methods.

Item PT04145

NOTE: Samples are NOT compatible with Olympus PK7200/7300 instruments.

	CLIA REGULATED	UNREGULATED
ANALYTES		<ul style="list-style-type: none"> • DAT

2021 Ship Dates March 1 October 4 Two shipments per year
Three samples per shipment



IMMUNOLOGY

ANA Immunoserology (XN)

Item PT04000

0.6mL liquid samples compatible with EIA, IFA, and multiplex methods. Educational titer and pattern reporting available. Samples are NOT compatible with latex agglutination methods.

	CLIA REGULATED		UNREGULATED	
ANALYTES	· Antinuclear antibody, qualitative			
2021 Ship Dates	February 1	May 3	August 23	Three shipments per year Five samples per shipment

ASO Immunoserology (XS)

Item PT04070

1mL liquid samples.

	CLIA REGULATED		UNREGULATED	
ANALYTES	· Antistreptolysin O (ASO), qualitative		· Antistreptolysin O (ASO), quantitative	
2021 Ship Dates	February 1	May 3	August 23	Three shipments per year Five samples per shipment

CRP Immunoserology (XP)

Item PT04160

QE Product Item PT04185

1mL liquid samples intended for methods screening for non-specific inflammatory disease.

	CLIA REGULATED		UNREGULATED	
ANALYTES			· C-reactive protein, qualitative * · C-reactive protein, quantitative	
2021 Ship Dates	February 1	August 23	Two shipments per year Three samples per shipment	

NOTE: For high-sensitivity CRP methods, see Cardiac products on page 10.

* Analyte(s) not yet accepted by the CAP Laboratory Accreditation Program

Helicobacter pylori Serology (HL)

Item PT04010

0.5mL liquid samples.

	CLIA REGULATED		UNREGULATED	
ANALYTES			· Helicobacter pylori (total antibody)	
2021 Ship Dates	February 1	August 23	Two shipments per year Three samples per shipment	

NOTE: For stool Helicobacter pylori, see HPSA product on page 39. For Urease, see Rapid Urease product on page 39.

IMMUNOLOGY

IMMUNOLOGY

Hepatitis (YB)

1.5mL liquid samples. Compatible with traditional hepatitis methods and OraQuick HCV Rapid Antibody Test.

Item PT04190
Add-on to HV or HVC Item PT04195

	CLIA REGULATED	UNREGULATED
ANALYTES	<ul style="list-style-type: none"> • Anti-HBc, IgM • Anti-HBc (total antibody) • HBsAg 	<ul style="list-style-type: none"> • Anti-HAV, IgM • Anti-HBs • Anti-HCV
2021 Ship Dates	February 1 May 3	August 23
		Three shipments per year Five samples per shipment

HIV Ag/Ab Combo (HVC)

1mL liquid samples. Compatible with Alere Determine HIV Combo rapid kit and automated combo assays used to detect HIV-1/2 antibody and HIV-1 p24 Antigen.

Item PT04064
QE Product Item PT04066

	CLIA REGULATED	UNREGULATED
ANALYTES	<ul style="list-style-type: none"> • Anti-HIV • Anti-HIV/p24 Antigen (not differentiated) 	<ul style="list-style-type: none"> • p24 Antigen
2021 Ship Dates	February 1 May 3	August 23
		Three shipments per year Five samples per shipment

Anti-HIV (HV)

1mL liquid samples. Compatible with rapid and traditional testing methods used to test for Anti-HIV-1 or Anti-HIV-1/2 (antibody).

Item PT04020
QE Product Item PT04030

NOTE: For methods that also detect p24 Antigen, see HVC product above.

	CLIA REGULATED	UNREGULATED
ANALYTES	<ul style="list-style-type: none"> • Anti-HIV 	
2021 Ship Dates	February 1 May 3	August 23
		Three shipments per year Five samples per shipment

Anti-HIV - Waived Methods (HVW)

1mL liquid samples. Compatible with waived rapid kits used to test for Anti-HIV-1 or Anti-HIV-1/2 (antibody).

Item PT04040
QE Product Item PT04062

NOTE: For methods that also detect p24 Antigen, see HVC product above.

	CLIA REGULATED	UNREGULATED
ANALYTES		<ul style="list-style-type: none"> • Anti-HIV
2021 Ship Dates	February 1 August 23	
		Two shipments per year Three samples per shipment

IMMUNOLOGY

Immunoproteins (IMP)

Item PT04290

1mL liquid samples.

	CLIA REGULATED	UNREGULATED
ANALYTES	<ul style="list-style-type: none"> • Alpha-1 • Antitrypsin (AAT) • Complement C3 • Complement C4 	<ul style="list-style-type: none"> • IgA • IgE • IgG • IgM
2021 Ship Dates	February 1 May 3	August 23
		Three shipments per year Five samples per shipment

Infectious Disease Serology (MMV)

Item PT04320

0.5mL lyophilized serum samples.

	CLIA REGULATED	UNREGULATED
ANALYTES		<ul style="list-style-type: none"> • Measles IgG, qualitative* • Measles IgM, qualitative • Mumps IgG, qualitative • Mumps IgM, qualitative • Varicella Zoster IgG, qualitative* • Varicella Zoster IgM, qualitative
2021 Ship Dates	February 1 August 23	
		Two shipments per year Three samples per shipment

* Analyte(s) not yet accepted by the CAP Laboratory Accreditation Program

Lyme Disease Serology (LY)

Item PT04200

0.5mL liquid samples.

	CLIA REGULATED	UNREGULATED
ANALYTES		<ul style="list-style-type: none"> • Lyme Disease Antibody, IgG • Lyme Disease Antibody, IgM • Lyme Disease Antibody, Total
2021 Ship Dates	February 1 August 23	
		Two shipments per year Three samples per shipment

Mono Immunoserology (ZM)

Item PT04210

0.65mL liquid samples.

	CLIA REGULATED	UNREGULATED
ANALYTES	<ul style="list-style-type: none"> • Infectious mononucleosis 	
2021 Ship Dates	February 1 May 3	August 23
		Three shipments per year Five samples per shipment

IMMUNOLOGY

Mono Immunoserology - Waived Methods (MW)

Item PT04220
QE Product Item PT04245

0.65mL liquid samples.

ANALYTES	CLIA REGULATED		UNREGULATED	
				<ul style="list-style-type: none"> Infectious mononucleosis
2021 Ship Dates	February 1	August 23		Two shipments per year Three samples per shipment

Mycoplasma Antibody (MP)

Item PT04300

0.5mL liquid samples. Compatible with kits that detect antibody to Mycoplasma pneumoniae.

ANALYTES	CLIA REGULATED		UNREGULATED	
				<ul style="list-style-type: none"> Mycoplasma antibody
2021 Ship Dates	February 1	August 23		Two shipments per year Three samples per shipment

Rheumatoid Factor Immunoserology (ZR)

Item PT04250
Add-on to ZM Product Item PT04255

1mL liquid samples.

ANALYTES	CLIA REGULATED		UNREGULATED	
		<ul style="list-style-type: none"> Rheumatoid factor, qualitative 		<ul style="list-style-type: none"> Rheumatoid factor, quantitative Rheumatoid factor, titer
2021 Ship Dates	February 1	May 3	August 23	Three shipments per year Five samples per shipment

Rubella Immunoserology (XU)

Item PT04260

1mL liquid samples.

ANALYTES	CLIA REGULATED		UNREGULATED	
		<ul style="list-style-type: none"> Rubella, qualitative (IgG) 		<ul style="list-style-type: none"> Rubella, quantitative (IgG)
2021 Ship Dates	February 1	May 3	August 23	Three shipments per year Five samples per shipment

IMMUNOLOGY

Rubella IgM Immunoserology (XM)

Item PT04330

0.5mL lyophilized serum samples. For Quality Assurance only; does not meet CMS Rubella requirements.

	CLIA REGULATED	UNREGULATED
ANALYTES		<ul style="list-style-type: none"> Rubella, qualitative (IgM)
2021 Ship Dates	February 1 August 23	Two shipments per year Three samples per shipment

SARS-CoV-2 Serology (SCA)

Item PT04340

QE Product Item PT04345

1.0mL samples intended for antibody detection.

	CLIA REGULATED	UNREGULATED
ANALYTES		<ul style="list-style-type: none"> SARS-CoV-2
2021 Ship Dates	February 1 August 23	Two shipments per year Three samples per shipment

NEW!

Syphilis Serology (SS)

Item PT04270

QE Product Item PT04280

1mL liquid samples intended for the quantitative and qualitative evaluation of antibody to Treponema pallidum. Intended for methods that evaluate serum specimens (RPR, VDRL, FTA, MHA-TP, TP-PA, EIA/ CIA, multiplex flow immunoassay, and rapid kits).

	CLIA REGULATED	UNREGULATED
ANALYTES	<ul style="list-style-type: none"> Syphilis Nontreponemal, qualitative Syphilis Nontreponemal, quantitative Syphilis Treponemal, qualitative 	
2021 Ship Dates	February 1 May 3 August 23	Three shipments per year Five samples per shipment

Thyroid Antibodies (THY)

Item PT04310

0.5mL liquid samples.

	CLIA REGULATED	UNREGULATED
ANALYTES		<ul style="list-style-type: none"> Thyroglobulin Antibody (Anti-TG), quantitative Thyroid Peroxidase/Microsomal Antibody (Anti-TPO), quantitative
2021 Ship Dates	February 1 August 23	Two shipments per year Three samples per shipment

IMMUNOLOGY



Microbiology CLIA requirements:

CLIA regulations require five proficiency testing challenges per event for each Microbiology sub-specialty. The sub-specialties are Bacteriology, Mycobacteriology, Mycology, Parasitology and Virology. All non-waived tests in a sub-specialty can be combined to meet the five challenges per event requirement.

Microbiology challenges tested with waived methods cannot be included with non-waived methods to meet the five challenges per event requirement.

Bacterial Antigens - for meningitis (BA)

Item PT05000

Samples for rapid antigen detection. Compatible with BD Directigen, Binax NOW, and Wellcogen.

	CLIA REGULATED	UNREGULATED
PROCEDURES ANTIGEN DETECTION	<ul style="list-style-type: none"> Group B Streptococci Haemophilus influenzae type b Neisseria meningitidis group A, C, Y, W135 	<ul style="list-style-type: none"> Neisseria meningitidis group B or E. coli K1 Streptococcus pneumoniae
2021 Ship Dates	February 8 June 1	September 7 Three shipments per year Five samples per shipment

Bacterial Vaginosis Detection (BV)

Item PT05005

Samples for the detection of bacterial vaginosis intended for use with the OSOM BV BLUE Test kit.

	CLIA REGULATED	UNREGULATED
PROCEDURES		<ul style="list-style-type: none"> Bacterial vaginosis detection
2021 Ship Dates	April 12 October 11	Two shipments per year Three samples per shipment

MICROBIOLOGY

▲ Bacteriology

Bacteriology - Comprehensive (MC)

Procedures listed are offered a minimum of two times per year. Culture samples are also compatible with molecular methods.

Item PT05030

NOTE: Group A Strep antigen samples are not compatible with Alere i Strep A. See WSM product on page 38.

	CLIA REGULATED	UNREGULATED
PROCEDURES	<ul style="list-style-type: none"> Anaerobic bacteria culture Antimicrobial susceptibility Blood culture C. difficile antigen and/or molecular Enteric pathogen identification Gram stain Group A Strep antigen detection Group A Strep culture 	<ul style="list-style-type: none"> Group B Strep culture Methicillin-resistant Staph aureus Miscellaneous culture N. gonorrhoeae culture Urine culture Vancomycin-resistant Enterococcus

2021 Ship Dates	February 8	June 1	September 7	Three shipments per year Nine samples per shipment
------------------------	------------	--------	-------------	---

Bacteriology - Limited (MC)

Culture samples are also compatible with molecular methods.

Item PT05040

NOTE: Group A Strep antigen samples are not compatible with Alere i Strep A. See WSM product on page 38.

	CLIA REGULATED	UNREGULATED
PROCEDURES (NUMBER/YEAR)	<ul style="list-style-type: none"> Anaerobic bacteria culture (1) Antimicrobial susceptibility (3) Blood culture (2) Gram stain (3) Group A Strep antigen detection (3) 	<ul style="list-style-type: none"> Group A Strep culture (3) N. gonorrhoeae culture (3) Urine culture (3) Wound culture (1)

2021 Ship Dates	February 8	June 1	September 7	Three shipments per year Five samples per shipment
------------------------	------------	--------	-------------	---

MICRO-BACTERIOLOGY

MICROBIOLOGY

▲ Bacteriology

Bioterrorism Preparedness Exercise (BPE)

Item PT06010

This is an educational exercise intended to document QA/competency for biological emergency response situations. It provides surrogate organisms with characteristics that mimic potentially lethal pathogens. Scores are not transmitted to accreditation agencies.

State coordinators can arrange to enroll and fund their response network (sentinel) laboratories. They will receive copies of all reports for use in assessment and documentation of capacity, readiness, and training needs.

2021 Ship Dates April 5 October 11 Two shipments per year
Two samples per shipment

Blood Culture (CB)

Item PT05360

2 Sample Add-on Item PT05370

QE Product Item PT05365

Samples for blood culture and/or multiplex methods, including identification of bacteria and fungi.

NOTE: Item PT05370 can be added on to any other Bacteriology product.

	CLIA REGULATED	UNREGULATED
PROCEDURES	• Blood culture • Gram stain	

2021 Ship Dates February 8 June 1 September 7 Three shipments per year
Five samples per shipment

Bordetella by Molecular Methods (BOR)

Item PT05055

Intended for detection of *B. pertussis*, *B. parapertussis*, and/or *B. holmesii* by molecular methods.

	CLIA REGULATED	UNREGULATED
PROCEDURES		• Bordetella species detection

2021 Ship Dates April 19 October 25 Two shipments per year
Five samples per shipment

Carbapenem Resistance Detection (CR)

Item PT05330

QE Product Item PT05335

Samples for detection of Carbapenem-resistant organisms (CRO). Intended for molecular methods, including the Cepheid GeneXpert Carba-R.

	CLIA REGULATED	UNREGULATED
PROCEDURES		• IMP detection • KPC detection • NDM-1 detection • OXA-48 detection • VIM detection

2021 Ship Dates March 29 October 4 Two shipments per year
Five samples per shipment

MICROBIOLOGY

▲ Bacteriology

Clostridium difficile (CD)

Item PT05060
QE Product Item PT05065

Compatible with rapid antigen or toxin detection methods as well as molecular methods.

	CLIA REGULATED	UNREGULATED
PROCEDURES	<ul style="list-style-type: none"> • C. difficile antigen detection • C. difficile molecular detection 	<ul style="list-style-type: none"> • C. difficile toxin detection

2021 Ship Dates	February 8	June 1	September 7	Three shipments per year Five samples per shipment
------------------------	------------	--------	-------------	---

CT/GC Detection (AC)

Item PT05070

Liquid samples containing human DNA. Intended for molecular methods.

	CLIA REGULATED	UNREGULATED
PROCEDURES	<ul style="list-style-type: none"> • Chlamydia trachomatis detection • Neisseria gonorrhoeae detection 	

2021 Ship Dates	February 8	June 1	September 7	Three shipments per year Five samples per shipment
------------------------	------------	--------	-------------	---

Enteric Pathogens (NP)

Item PT05080

Each organism is presented at least once per year. Compatible with culture, molecular methods and rapid Campylobacter identification methods.

NOTE: NOT compatible with Shiga Toxin testing methods (see SHG product on page 41).

	CLIA REGULATED	UNREGULATED
PROCEDURES	<ul style="list-style-type: none"> • Aeromonas • Campylobacter • E. coli O157:H7 • Plesiomonas 	<ul style="list-style-type: none"> • Salmonella • Shigella • Vibrio • Yersinia

2021 Ship Dates	February 8	June 1	September 7	Three shipments per year Five samples per shipment
------------------------	------------	--------	-------------	---

MICROBIOLOGY

▲ Bacteriology

GI Multiplex (EP)

Item PT05380

Samples intended for gastrointestinal multiplex assays.

	CLIA REGULATED	UNREGULATED
PROCEDURES	<ul style="list-style-type: none"> • Adenovirus • Astrovirus • Campylobacter • Clostridium difficile • Escherichia coli (toxigenic) • Norovirus 	<ul style="list-style-type: none"> • Plesiomonas • Rotavirus • Salmonella • Sapovirus • Shigella • Vibrio • Yersinia
2021 Ship Dates	February 8	June 1
		September 7
		Three shipments per year Five samples per shipment

Gram Stain (GS)

Item PT05090

QE Product Item PT05100

Methanol-fixed slides for Gram staining.

	CLIA REGULATED	UNREGULATED
PROCEDURES	<ul style="list-style-type: none"> • Gram reaction 	<ul style="list-style-type: none"> • Organism morphology
2021 Ship Dates	February 8	June 1
		September 7
		Three shipments per year Five samples per shipment



MICROBIOLOGY

▲ Bacteriology

Group A Strep Antigen (Rapid Strep) (SA)

Samples for Group A Streptococci antigen detection (rapid strep).

	CLIA REGULATED	UNREGULATED
PROCEDURES	• Group A Strep antigen detection	
2021 Ship Dates	February 8 June 1	September 7 Three shipments per year Five samples per shipment

Item PT05110
QE Product Item PT05120

NOTE: Group A strep antigen samples are not compatible with Alere i-Strep A. See WSM product below.

Group A Strep Antigen (Rapid Strep) - Waived Methods (WS)

Intended for waived methods only.

	CLIA REGULATED	UNREGULATED
PROCEDURES		• Group A Strep antigen detection
2021 Ship Dates	April 5 October 18	Two shipments per year Three samples per shipment

Item PT05130
QE Product Item PT05155

NOTE: Customers using molecular methods, see WSM product below

Group A Strep Molecular - Waived Methods (WSM)

Intended for waived molecular methods only.

	CLIA REGULATED	UNREGULATED
PROCEDURES		• Group A Strep molecular detection
2021 Ship Dates	April 12 October 11	Two shipments per year Three samples per shipment

Item PT05410
QE Product Item PT05415

Group A Strep (ST)

Samples for detection of Group A Streptococci. Compatible with culture and molecular methods.

	CLIA REGULATED	UNREGULATED
PROCEDURES	• Group A Strep	
2021 Ship Dates	February 8 June 1	September 7 Three shipments per year Five samples per shipment

Item PT05170

MICROBIOLOGY

▲ Bacteriology

Group B Strep / Neisseria gonorrhoeae (SB)

Samples for detection of Group B Streptococci by culture or molecular methods and/or N. gonorrhoeae by culture.

Item PT05180

QE Product Item PT05185

	CLIA REGULATED		UNREGULATED	
PROCEDURES	<ul style="list-style-type: none"> Group B Strep Neisseria gonorrhoeae 			
2021 Ship Dates	February 8	June 1	September 7	Three shipments per year Five samples per shipment

Helicobacter pylori Antigen, Stool (HPSA)

0.5mL liquid samples intended for the qualitative evaluation of Helicobacter pylori antigen in stool specimens.

Item PT05400

NOTE: For serum Helicobacter pylori, see HL product on page 28.

* Analyte(s) not yet accepted by the CAP Laboratory Accreditation Program

	CLIA REGULATED		UNREGULATED	
PROCEDURES			<ul style="list-style-type: none"> Helicobacter pylori antigen detection * 	
2021 Ship Dates	April 12	October 11		Two shipments per year Two samples per shipment

Helicobacter pylori - Rapid Urease (RUR)

Simulated gastric biopsy samples on paper disks. Intended for use with CLOtest, PyloriTek, or similar methods.

Item PT05500

NOTE: For serum Helicobacter pylori, see HL product on page 28.

* Analyte(s) not yet accepted by the CAP Laboratory Accreditation Program

	CLIA REGULATED		UNREGULATED	
ANALYTES			<ul style="list-style-type: none"> Urease * 	
2021 Ship Dates	April 12	October 11		Two shipments per year Three samples per shipment

Legionella Antigen (LGA)

0.5mL liquid samples for Legionella Antigen detection methods in urine.

2 Sample Add-on Item PT05440

NOTE: Item PT05440 can only be ordered when added to another Bacteriology product.

	CLIA REGULATED		UNREGULATED	
ANALYTES	<ul style="list-style-type: none"> Legionella Antigen 			
2021 Ship Dates	February 8	June 1	September 7	Three shipments per year Two samples per shipment

MICROBIOLOGY

▲ Bacteriology

Meningitis Multiplex (MEP)

Item PT05450

Samples intended for meningitis multiplex assays.

	CLIA REGULATED	UNREGULATED
ANALYTES	<ul style="list-style-type: none"> • Cytomegalovirus (CMV) • Enterovirus (EV) • Escherichia coli K1 • Haemophilus influenzae • Herpes simplex virus 1 (HSV-1) • Herpes simplex virus 2 (HSV-2) • Human herpesvirus 6 (HHV-6) 	<ul style="list-style-type: none"> • Human parechovirus (HPeV) • Listeria monocytogenes • Neisseria meningitidis • Streptococcus agalactiae • Streptococcus pneumoniae • Varicella zoster virus (VZV)
		<ul style="list-style-type: none"> • Cryptococcus neoformans/gattii
2021 Ship Dates	February 8 June 1	September 7 Three shipments per year Five samples per shipment

MRSA / VRE (MR)

Item PT05200

QE Product Item PT05210

Compatible with culture and molecular methods. NOT intended for methods that screen for specific VRE genes (vanA, vanB, etc.).

	CLIA REGULATED	UNREGULATED
PROCEDURES	<ul style="list-style-type: none"> • Staphylococcus aureus • Methicillin-resistant S. aureus • Vancomycin-resistant Enterococcus 	
2021 Ship Dates	February 8 June 1	September 7 Three shipments per year Five samples per shipment

Mycoplasma genitalium Molecular (MG)

Item PT05460

Samples for molecular detection of Mycoplasma genitalium.

	CLIA REGULATED	UNREGULATED
PROCEDURES		<ul style="list-style-type: none"> • M. genitalium detection
2021 Ship Dates	April 12 October 11	Two shipments per year Three samples per shipment

MICROBIOLOGY

▲ Bacteriology

Shiga Toxin (SHG)

Item PT05240

Samples for Shiga Toxin 1 and/or 2 and undifferentiated detection methods. Compatible with rapid antigen detection and molecular methods.

	CLIA REGULATED	UNREGULATED
PROCEDURES		<ul style="list-style-type: none"> • Shiga toxin 1 detection • Shiga toxin 2 detection • Shiga toxin undifferentiated
2021 Ship Dates	April 12 October 11	Two shipments per year Three samples per shipment

Throat/Urine Bacteriology (TU)

Item PT05250

Samples for urine culture, Group A Streptococci culture, and Group A Streptococci antigen detection (rapid strep).

NOTE: Group A strep antigen samples are not compatible with Alere i Strep A. See WSM product on page 38.

	CLIA REGULATED	UNREGULATED
PROCEDURES (NUMBER/ SHIPMENT)	<ul style="list-style-type: none"> • Antimicrobial susceptibility (1) • Gram stain (1) • Group A Strep antigen detection (2) 	<ul style="list-style-type: none"> • Group A Strep culture (2) • Urine culture (3)
2021 Ship Dates	February 8 June 1 September 7	Three shipments per year Seven samples per shipment

Throat/Urine Bacteriology - Limited (TU)

Item PT05260

Samples for urine culture and Group A Streptococci culture.

	CLIA REGULATED	UNREGULATED
PROCEDURES (NUMBER/ SHIPMENT)	<ul style="list-style-type: none"> • Antimicrobial susceptibility (1) • Gram stain (1) 	<ul style="list-style-type: none"> • Group A Strep culture (2) • Urine culture (3)
2021 Ship Dates	February 8 June 1 September 7	Three shipments per year Five samples per shipment

Urine Culture (UC)

Item PT05270

Samples for urine culture.

	CLIA REGULATED	UNREGULATED
PROCEDURES (NUMBER/ SHIPMENT)	<ul style="list-style-type: none"> • Antimicrobial susceptibility (1) 	<ul style="list-style-type: none"> • Gram stain (1) • Urine culture (5)
2021 Ship Dates	February 8 June 1 September 7	Three shipments per year Five samples per shipment

MICROBIOLOGY

▲ Bacteriology

Vaginal Pathogens (VP)

Intended for use with the BD Affirm VP111.

Item PT05280
QE Product Item PT05290

	CLIA REGULATED	UNREGULATED
PROCEDURES	<ul style="list-style-type: none">• Gardnerella detection	<ul style="list-style-type: none">• Candida detection• Trichomonas detection
2021 Ship Dates	February 8 June 1	September 7 Three shipments per year Five samples per shipment

VP Molecular (VPM)

Samples for detection of vaginal pathogens via molecular methods. Compatible with BD MAX and Aptima Vaginal Panels.

Item PT05470

	CLIA REGULATED	UNREGULATED
PROCEDURES		<ul style="list-style-type: none">• Bacterial vaginosis detection• Candida detection• Trichomonas detection
2021 Ship Dates	February 8 June 1	September 7 Three shipments per year Five samples per shipment

MICRO-BACTERIOLOGY



MICROBIOLOGY

▲ Mycobacteriology

Acid-Fast Stain (MA)

Item PT06000

Intended for reporting the presence or absence of acid-fast bacilli.

Add-on to MB (below) Item PT06005

	CLIA REGULATED	UNREGULATED
PROCEDURES	• Acid-fast stain	
2021 Ship Dates	March 29 October 4	Two shipments per year Five samples per shipment

Mycobacteriology Culture (MB)

Item PT06060

Samples for Mycobacterium species culture.

	CLIA REGULATED	UNREGULATED
PROCEDURES	• Mycobacteria culture	
2021 Ship Dates	March 29 October 4	Two shipments per year Five samples per shipment

M. tuberculosis by Molecular Methods (TB5)

Item PT06050

Intended for Mycobacterium tuberculosis detection by molecular methods. Includes detection of Rifampin resistance.

	CLIA REGULATED	UNREGULATED
PROCEDURES		• M. tuberculosis detection • Rifampin resistance screen
2021 Ship Dates	March 29 October 4	Two shipments per year Five samples per shipment

MICROBIOLOGY

▲ Mycology

KOH Slides (KOH)

Item PT06230

Slides for KOH/calcofluor white preparations.

	CLIA REGULATED	UNREGULATED
PROCEDURES		• KOH Preparation
2021 Ship Dates	April 12 October 11	Two shipments per year Three samples per shipment

Mycology - Comprehensive (MY)

Item PT06070

Samples for comprehensive fungal culture including yeast, dermatophytes, and aerobic actinomycete identification.

	CLIA REGULATED	UNREGULATED
PROCEDURES	• Aerobic Actinomycetes identification • Mold, yeast, and yeast-like organism identification	
2021 Ship Dates	February 8 June 1 September 7	Three shipments per year Five samples per shipment

Mycology - Cryptococcal Antigen (MYC)

Item PT06080

Simulated CSF samples for cryptococcal antigen detection.

	CLIA REGULATED	UNREGULATED
PROCEDURES		• Cryptococcal antigen detection
2021 Ship Dates	February 8 June 1 September 7	Three shipments per year Five samples per shipment

Mycology - Dermatophyte (DM)

Item PT06090

Two reporting options: 1) Qualitative - Designed for laboratories or dermatology offices reporting the presence or absence of dermatophytes. Compatible with Dermatophyte Test Medium [DTM] or non-specialized and non-differential mycology media. 2) Identification - Designed for laboratories or dermatology offices identifying dermatophytes to a genus or species level.

	CLIA REGULATED	UNREGULATED
PROCEDURES	• Dermatophyte identification to genus or species level (Identification)	• Dermatophyte screen by culture (Qualitative)
2021 Ship Dates	February 8 June 1 September 7	Three shipments per year Five samples per shipment

MICROBIOLOGY

▲ Mycology

India Ink (IND)

Item PT06105

Liquid samples to detect presence or absence of encapsulated yeast using India Ink methods.

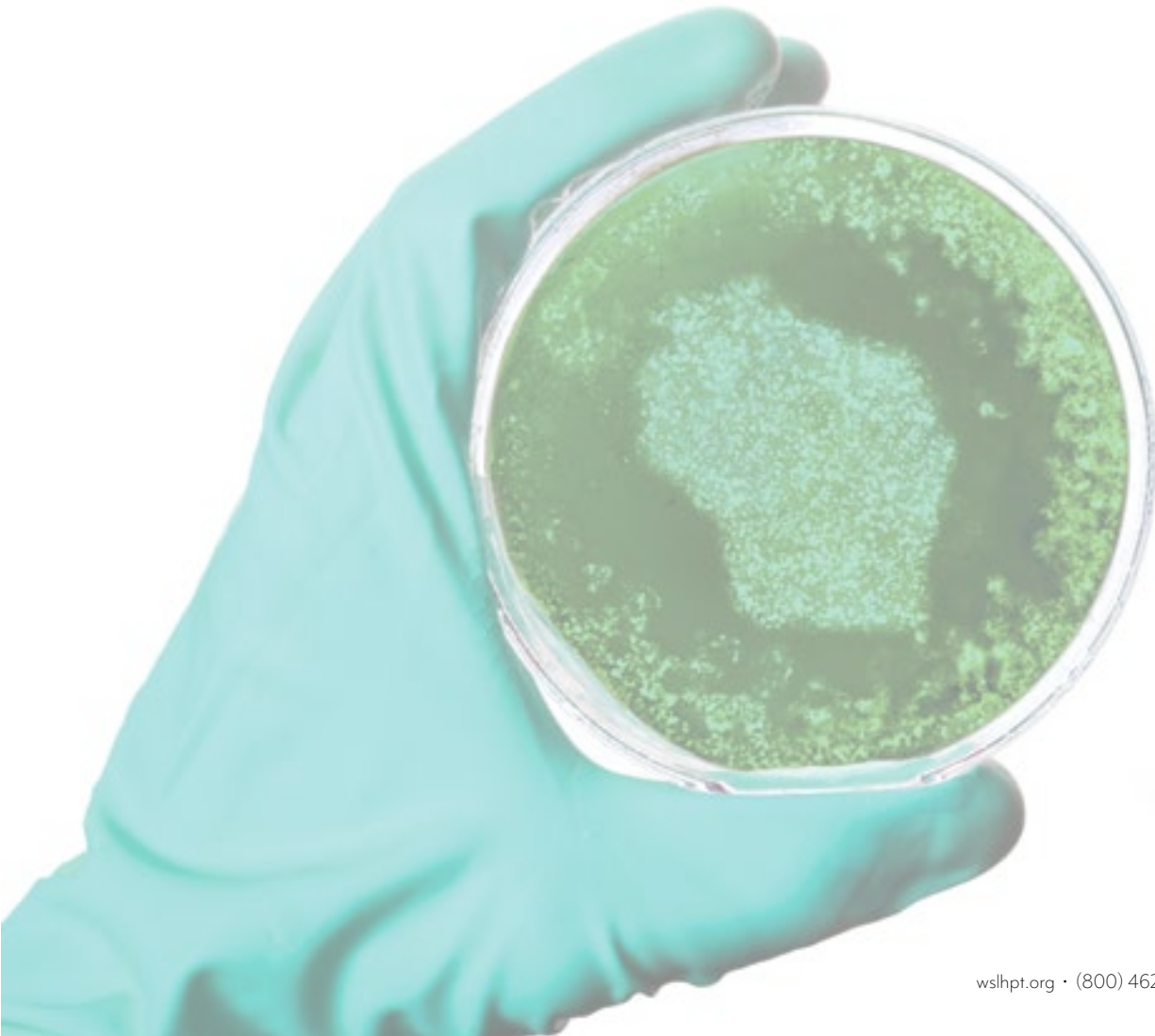
	CLIA REGULATED	UNREGULATED
PROCEDURES		• India Ink
2021 Ship Dates	April 12 October 11	Two shipments per year Three samples per shipment

Mycology - Yeast (YE)

Item PT06100

Samples for yeast culture. Not intended for wet mount preparations.

	CLIA REGULATED	UNREGULATED
PROCEDURES	• Yeast and yeast-like organism identification	
2021 Ship Dates	February 8 June 1	September 7 Three shipments per year Five samples per shipment



MICROBIOLOGY

▲ Parasitology

Blood Parasites (PAB)

Item PT06020

Samples include giemsa-stained smears and/or photomicrographs of thick and thin blood smears.

	CLIA REGULATED	UNREGULATED
PROCEDURES	<ul style="list-style-type: none">• Anaplasma species• Babesia species• Ehrlichia species• Filarial worms	<ul style="list-style-type: none">• Plasmodium species• Trypanosoma species
2021 Ship Dates	February 8 June 1	September 7 Three shipments per year Five samples per shipment

Giardia/Cryptosporidium Antigen Detection (GI)

Item PT06030

Formalin-preserved samples for Giardia/Cryptosporidium detection. Samples are not compatible with Triage devices. Intended for laboratories performing Giardia/Cryptosporidium screening on stool samples.

	CLIA REGULATED	UNREGULATED
PROCEDURES	<ul style="list-style-type: none">• Giardia/Cryptosporidium antigen detection	
2021 Ship Dates	February 8 June 1	September 7 Three shipments per year Five samples per shipment

Parasitology - Comprehensive (PA)

Item PT06110

Sample types include formalin-preserved stool, zinc-PVA stool smears, and blood parasite smears/photomicrographs. Samples are not compatible with Triage devices. Intended for Level 2 laboratories (as defined by CLIA '88) performing full O&P identification of stool specimens.

	CLIA REGULATED	UNREGULATED
PROCEDURES	<ul style="list-style-type: none">• Blood parasite identification• Giardia/Cryptosporidium antigen detection• Modified acid-fast stain• Permanent stain• Stool wet mount	
2021 Ship Dates	February 8 June 1	September 7 Three shipments per year Six samples per shipment

MICRO-PARASITOLOGY

MICROBIOLOGY

▲ Parasitology

Trichomonas Molecular (TVM)

Item PT05320

Liquid samples for molecular detection of Trichomonas.

	CLIA REGULATED	UNREGULATED
PROCEDURES		• Trichomonas detection
2021 Ship Dates	April 12 October 11	Two shipments per year Three samples per shipment

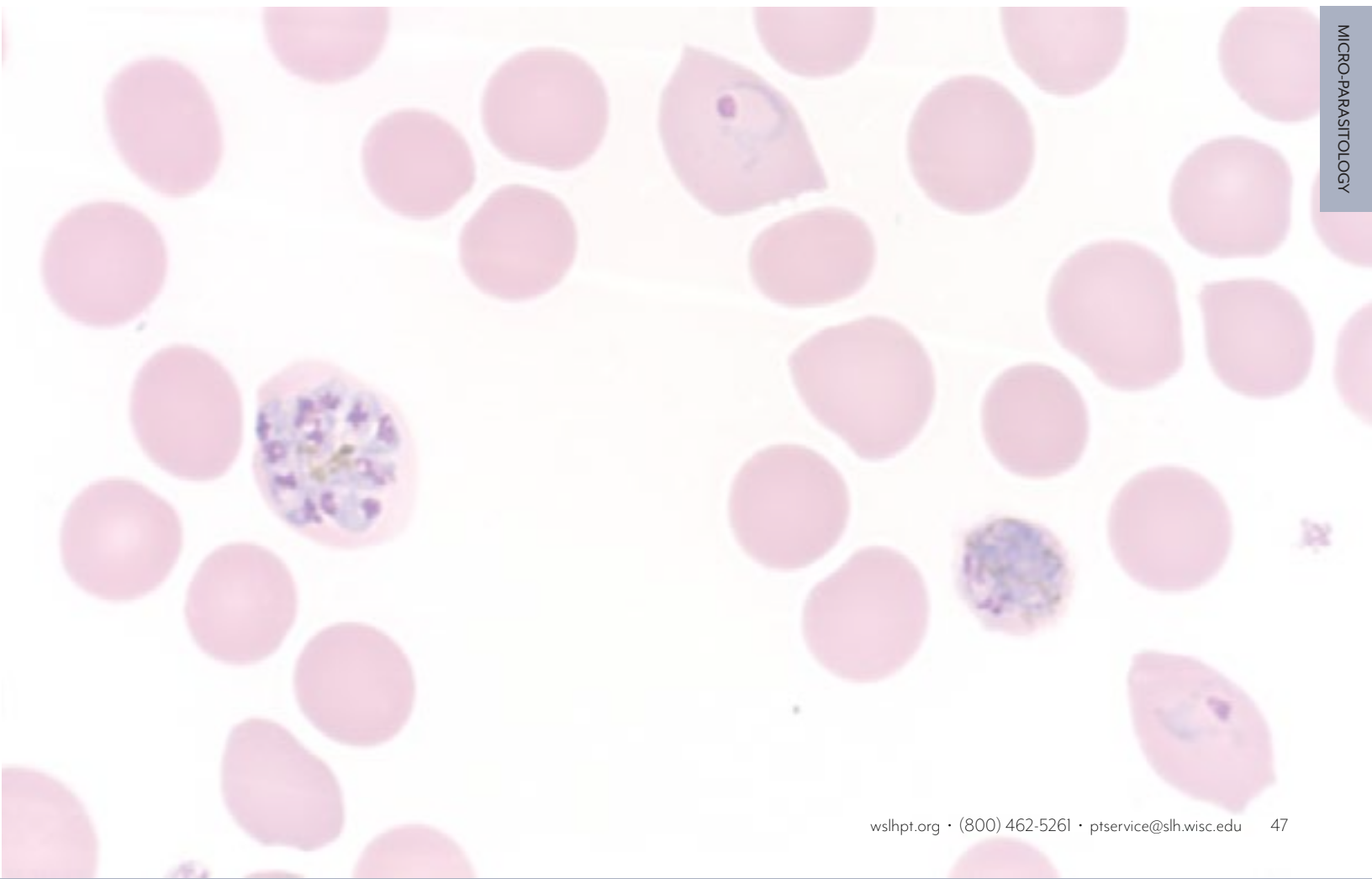
Trichomonas OSOM (TV)

Item PT05310

QE Product Item PT05315

Samples for detection of Trichomonas intended for use with OSOM Trichomonas Rapid Test.

	CLIA REGULATED	UNREGULATED
PROCEDURES		• Trichomonas detection
2021 Ship Dates	April 12 October 11	Two shipments per year Three samples per shipment



MICRO-PARASITOLOGY

MICROBIOLOGY

▲ Virology

HPV Molecular (HPV)

Item PT06250

1mL liquid samples intended for molecular detection of Human Papillomavirus.

	CLIA REGULATED		UNREGULATED	
ANALYTES	• HPV		• HPV Genotyping	
2021 Ship Dates	January 19	April 12	October 11	Three shipments per year Five samples per shipment

HSV Molecular (HSV)

Item PT06220

Liquid samples intended for molecular detection of Herpes Simplex Virus (HSV) 1 & 2.

	CLIA REGULATED		UNREGULATED	
ANALYTES	• HSV 1	• HSV 2		
2021 Ship Dates	January 19	April 12	October 11	Three shipments per year Five samples per shipment

Rabies (RA)

Dual impressions on Teflon-coated slides.

DFA Method Item PT06130
dRIT Method Item PT06140
QE Product DFA Method Item PT06137
QE Product dRIT Method Item PT06147

	CLIA REGULATED		UNREGULATED	
ANALYTES			• Rabies Antigen	
2021 Ship Dates	April 19	October 25	Two shipments per year Five samples per shipment	

Respiratory Multiplex (RP)

Samples intended for molecular respiratory multiplex assays.

Item PT06240
QE Product Item PTO6244

	CLIA REGULATED		UNREGULATED	
ANALYTES	• Adenovirus • Bordetella • Chlamydomphila pneumoniae • Coronavirus • Human metapneumovirus • Influenza	• Mycoplasma pneumoniae • Parainfluenza • Respiratory syncytial virus (RSV) • Rhinovirus/Enterovirus	• SARS-CoV-2	
2021 Ship Dates	January 19	April 12	October 11	Three shipments per year Five samples per shipment

ENHANCED

MICROBIOLOGY

▲ Virology

SARS-CoV-2 Antigen (CVW)

Swabs intended for antigen tests targeting the SARS-CoV-2 nucleoprotein.

Item PT06290
QE Product Item PT06295

NEW!

	CLIA REGULATED	UNREGULATED
ANALYTES		• SARS-CoV-2
2021 Ship Dates	April 12 October 11	Two shipments per year Three samples per shipment

SARS-CoV-2 Molecular - 5 Samples (CM)

Swabs with 1.5mL elution liquid intended for molecular detection of SARS-CoV-2. Whole genome product that contains 100% genetic sequences of the virus.

Item PT06270
QE Product Item PT06275

NEW!

	CLIA REGULATED	UNREGULATED
ANALYTES		• SARS-CoV-2
2021 Ship Dates	January 19 April 12 October 11	Three shipments per year Five samples per shipment

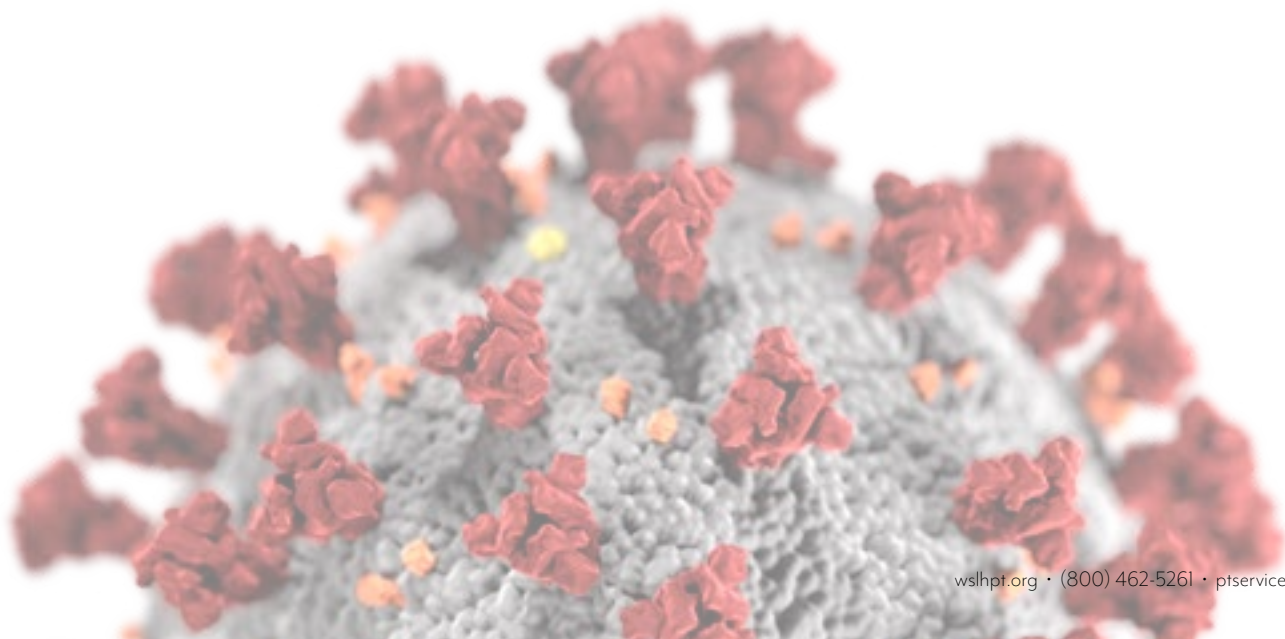
SARS-CoV-2 Molecular - 3 Samples (CMW)

Swabs with 1.5mL elution liquid intended for molecular detection of SARS-CoV-2. Whole genome product that contains 100% genetic sequences of the virus.

Item PT06280
QE Product Item PT06285

NEW!

	CLIA REGULATED	UNREGULATED
ANALYTES		• SARS-CoV-2
2021 Ship Dates	April 12 October 11	Two shipments per year Three samples per shipment



MICROBIOLOGY

▲ Virology

Viral Antigens - Limited (VA)

Liquid samples for rapid antigen test kits or molecular methods.

	CLIA REGULATED	UNREGULATED
ANALYTES	<ul style="list-style-type: none">• Adenovirus• Influenza A	<ul style="list-style-type: none">• Influenza B• RSV
2021 Ship Dates	January 19 April 12	October 11
		Three shipments per year Five samples per shipment

Item PT06150
QE Product Item PT06160

Viral Antigens with Rotavirus (VA)

Liquid samples for rapid antigen test kits or molecular methods.

	CLIA REGULATED	UNREGULATED
ANALYTES	<ul style="list-style-type: none">• Adenovirus• Influenza A• Influenza B	<ul style="list-style-type: none">• RSV• Rotavirus
2021 Ship Dates	January 19 April 12	October 11
		Three shipments per year Five samples per shipment

Item PT06200
QE Product Item PT06210

NOTE: Customers not testing Rotavirus,
choose Limited product above.

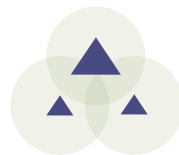
Viral Antigens - Waived Methods (VCW)

Liquid samples intended for waived rapid antigen test kits or molecular methods.

	CLIA REGULATED	UNREGULATED
ANALYTES		<ul style="list-style-type: none">• Adenovirus *• Influenza A
		<ul style="list-style-type: none">• Influenza B• RSV
2021 Ship Dates	April 12	October 11
		Two shipments per year Three samples per shipment

Item PT06170
QE Product Item PT06195

* Analyte(s) not yet accepted by the
CAP Laboratory Accreditation Program



URINALYSIS/MICROSCOPY/MISC

Amniotic Fluid Detection (AE)

Item PT03000
QE Product Item PT03025

0.4mL liquid samples for detecting the presence/absence of fluid from ruptured fetal membranes. Intended for use with the Actim PROM, AmniSure ROM, Clinical Innovations ROM Plus, and PartoSure.

CLIA REGULATED		UNREGULATED
ANALYTES		• Rupture of fetal membranes
2021 Ship Dates	May 24 October 25	Two shipments per year Two samples per shipment

Body Fluid Cell Count (BFA & BFM)

Automated cell count (BFA) Item PT03030
Manual cell count (BFM) Item PT03040
QE Product BFA Item PT03037

Clear, protein-based, liquid samples intended for labs performing body fluid cell counts by automated or manual methods. These samples are NOT compatible with the IRIS IQ200.

CLIA REGULATED		UNREGULATED
ANALYTES		• RBC • WBC
2021 Ship Dates	April 5 October 18	Two shipments per year Three samples per shipment

Body Fluid Microscopy (BF)

Item PT03050

Three images (paper and online versions) that include crystal(s) and/or cell identification(s) found in miscellaneous fluids (e.g., synovial, spinal, pleural). A synovial fluid crystal identification will be provided in one of the three images per event.

CLIA REGULATED		UNREGULATED
ANALYTES		• Cell identification • Crystal identification
2021 Ship Dates	April 5 October 18	Two shipments per year Three samples per shipment

Fecal Lactoferrin (LF)

Item PT03060

0.5mL liquid samples compatible with the LEUKO-TEST, LEUKO EZ VUE, IBD-Chek, and IBD EZ VUE methods.

CLIA REGULATED		UNREGULATED
ANALYTES		• Lactoferrin
2021 Ship Dates	April 5 October 18	Two shipments per year Three samples per shipment

URINALYSIS/MICROSCOPY/MISC

Fecal Occult Blood (OC)

Item PT03070
QE Product Item PT03095

Simulated fecal samples compatible with FOB (slide), iFOB, and automated systems.

CLIA REGULATED		UNREGULATED
ANALYTES		• Occult blood (fecal)
2021 Ship Dates	April 5 October 18	Two shipments per year Three samples per shipment

Fetal Fibronectin (FFN)

Item PT03100

1mL liquid simulated cervicovaginal samples.

CLIA REGULATED		UNREGULATED
ANALYTES		• Fetal fibronectin
2021 Ship Dates	May 24 October 25	Two shipments per year Three samples per shipment

Gastric Occult Blood (GO)

Item PT03110
QE Product Item PT03135

Liquid samples intended for Beckman Coulter Gastrocult slides and Aerscher HemaPrompt FG slides.

NOTE: For body fluid pH other than Beckman Coulter Gastrocult slides, see PC or PH product on page 12.

CLIA REGULATED		UNREGULATED
ANALYTES		• Occult blood (gastric) • pH (Gastrocult slides)
2021 Ship Dates	April 5 October 18	Two shipments per year Three samples per shipment

URINALYSIS / MICROSCOPY / MISC

Point of Care / PPMP Package (POC)

Combination of five commonly ordered tests in one convenient package. QE products are available as a package (all five modules) or may be ordered individually.
Whole Blood Glucose QE products include reporting for up to 20 result sets.

Package Item PT03400
QE Product Package Item PT03405
QE Product OC only Item PT03097
QE Product WS only Item PT05152
QE Product PM only Item PT03187
QE Product UR only Item PT03277
QE Product WBG only Item PT01895

	CLIA REGULATED	UNREGULATED
ANALYTES		
Fecal Occult Blood (OC) 3 samples		<ul style="list-style-type: none"> Occult blood (fecal)
Group A Strep Antigen - waived methods (WS) 3 samples		<ul style="list-style-type: none"> Group A Strep antigen detection
PPMP (PM) 2 images each procedure (paper & online versions)		<ul style="list-style-type: none"> Fecal smear for leukocytes Fern test KOH (skin & vaginal) Nasal smear for eosinophils Pinworm preparation Urine sediment Vaginal wet preparation
Urinalysis/ Urine hCG (UR) 3 samples		<ul style="list-style-type: none"> Bilirubin Bilirubin - Tablet test Glucose hCG, urine – qualitative Hemoglobin/Blood Ketones Ketones - Tablet test Leukocyte esterase Nitrites pH Protein Specific gravity Urobilinogen
Whole Blood Glucose (WBG) 3 samples		<ul style="list-style-type: none"> Whole Blood Glucose

2021 Ship Dates	April 5	October 18	Two shipments per year Two/three challenges per shipment
------------------------	---------	------------	---

UR/MICROMISC

URINALYSIS / MICROSCOPY / MISC

Provider Performed Microscopy (PM)

Two images (paper and online versions) for each of the procedures listed below.

	CLIA REGULATED	UNREGULATED
ANALYTES		<ul style="list-style-type: none"> • Fecal smear for leukocytes • Fern test • KOH (skin & vaginal) • Nasal smear for eosinophils • Pinworm preparation • Urine sediment • Vaginal wet preparation
2021 Ship Dates	April 5 October 18	Two shipments per year Two challenges per procedure

Item PT03170

QE Product Item PT03195

NOTE: Online PPM Competency is also available on page 60.

Urinalysis / Urine hCG (UR)

Liquid samples for urinalysis and urine pregnancy.

	CLIA REGULATED	UNREGULATED
ANALYTES		<ul style="list-style-type: none"> • Bilirubin • Bilirubin - Tablet test • Glucose • hCG, urine – qualitative • Hemoglobin/Blood • Ketones • Ketones - Tablet test • Leukocyte esterase • Nitrites • pH • Protein • Specific gravity • Urobilinogen
2021 Ship Dates	April 5 October 18	Two shipments per year Three samples per shipment

Item PT03260

QE Product Item PT03285

NOTE: For serum hCG see CET and HCG products on page 14.

Urine hCG - 5 Samples (UH)

Liquid samples for urine pregnancy.

	CLIA REGULATED	UNREGULATED
ANALYTES		<ul style="list-style-type: none"> • hCG, urine – qualitative
2021 Ship Dates	April 5 October 18	Two shipments per year Five samples per shipment

Item PT03290

QE Product Item PT03315

NOTE: For serum hCG see CET and HCG products on page 14.

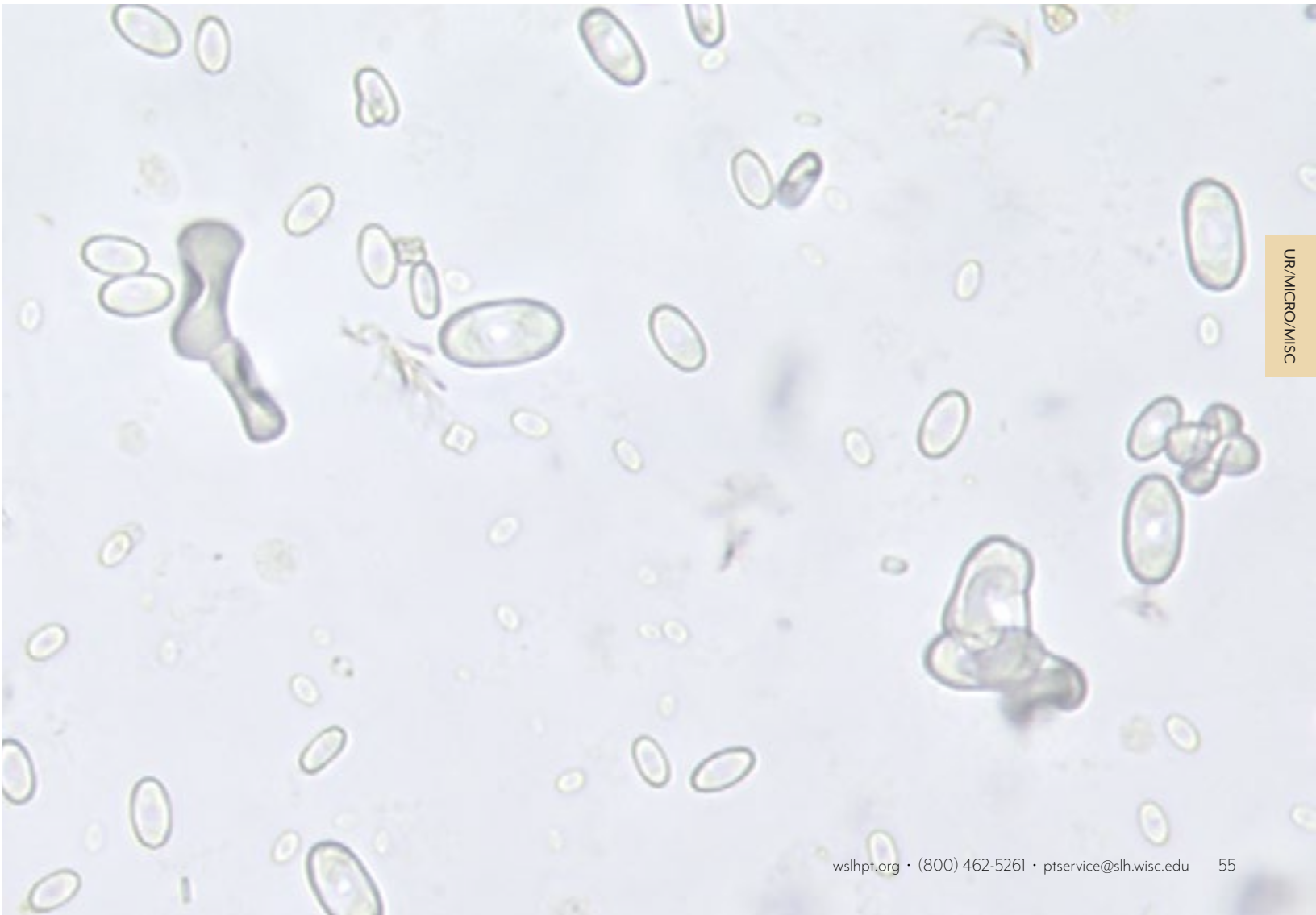
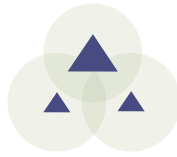
URINALYSIS / MICROSCOPY / MISC

Urine Sediment Identification (SU)

Item PT03320
QE Product Item PT03345

Two images (paper and online versions) for the identification of urine sediment components.

CLIA REGULATED		UNREGULATED
ANALYTES		• Urine sediment component identification
2021 Ship Dates	April 5 October 18	Two shipments per year Two challenges per shipment



UR/MICRO/MISC

ANDROLOGY

Post-Vasectomy Semen Analysis (PV)

Item PT03140

1mL stabilized liquid sperm samples for post-vasectomy presence/absence screening and sperm count. Compatible with manual and automated methods.

	CLIA REGULATED	UNREGULATED
ANALYTES		<ul style="list-style-type: none"> • Sperm count, qualitative • Sperm count, quantitative *
2021 Ship Dates	May 24 October 25	Two shipments per year Two samples per shipment

* Analyte(s) not yet accepted by the CAP Laboratory Accreditation Program

Sperm Count (SP)

Item PT03200

1mL stabilized liquid sperm samples. Compatible with manual and automated methods. NOTE: Sperm count for automated methods not yet CAP accepted.

	CLIA REGULATED	UNREGULATED
ANALYTES		<ul style="list-style-type: none"> • Sperm count, quantitative
2021 Ship Dates	May 24 October 25	Two shipments per year Two samples per shipment

Sperm Morphology (SM & SMS)

Unstained slide (SM) Item PT03210
Pre-stained slide (SMS) Item PT03220

Slide and image for percent normal and morphology assessment. Pre-stained slide is stained with modified Papanicolaou.

	CLIA REGULATED	UNREGULATED
ANALYTES		<ul style="list-style-type: none"> • Sperm morphology
2021 Ship Dates	May 24 October 25	Two shipments per year One slide & image per shipment

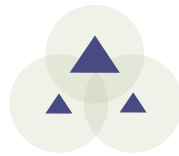
ANDROLOGY

Sperm Motility (MOT)

Item PT03230

Web-based videos of two semen samples with multiple microscopic fields showing live and immobilized sperm.

	CLIA REGULATED	UNREGULATED
ANALYTES		<ul style="list-style-type: none">• Sperm motility• Sperm progressive motility
2021 Ship Dates	May 24 October 25	Two shipments per year Two videos per shipment



ONLINE TRAINING & COMPETENCY

WSLH Proficiency Testing has partnered with Medical Training Solutions (MTS) at the University of Washington to bring you customizable Online Training & Competency. [View a demo video](#) or [submit an order form](#) online at wslhpt.org.

 <h3>Clinical Laboratory</h3> <p>Track training and competency of staff involved in all phases of laboratory testing: specimen collection, transport, processing and analysis.</p>	 <h3>Point of Care</h3> <p>Administer and track competency tests for staff using microscopes, waived test kits, and instruments at the point of care.</p>	 <h3>Specimen Collection</h3> <p>Track and document training and competency assessment for specimen collection staff.</p>
---	--	--

WSLH PT is pleased to offer our customers online training and competency assessment for the clinical laboratory and point of care through Medical Training Solutions (MTS).

These programs are used by over 1500 laboratories and feature:

- Streamlined tracking and documentation
- High quality multimedia content developed with the University of Washington
- Over 50 hour of Continuing Education (CE) credit
- Create your own tests
- Upload and track your existing documents

The MTS Training and Competency features:

- High quality digital images
- New questions in each Competency topic are published biannually
- Simple test interfaces - multiple choice format that is easy to navigate
- Automated email notifications - one click sends reminders to your staff
- Automated login for test takers - email notifications provide an auto login link Test taker simply clicks on this link to go directly to their assignments menu
- Real time monitoring of test completions and documentation for inspectors - use the reporting feature to track progress and to generate printable reports

ORDER OPTIONS

All order options include access for up to 30 individuals. Please consult the price list for additional fees for more than 30 users.

Order Options for Training Courses and Competency Tests

- BEST OPTION -

Receive All Training Courses and Competency Tests for \$800!

Items may be ordered separately or combined for savings.

View complete order options for Training Courses and Competency Tests on the 2021 Price List.

Order Options for Microscopy Procedures (PPMP)

PPMP Training Courses and PPMP Competency Assessment may be ordered separately or combined for savings.

View order options on the 2021 Price List.

Order Options for Waived Test Kits and POC Instruments (WPOC)

WPOC Competency Assessment may be ordered separately or as an add on to any Training Course and/or Competency Test order.

View order options on the 2021 Price List.



ONLINE TRAINING & COMPETENCY

TRAINING COURSES AND COMPETENCY TESTS

Training Courses

All Training Courses PT80000
Individual Training Courses See below

Training courses are accredited for 1-3 hours of continuing education (CE) credit and can be used for initial training, cross training, remediation, and as a reference.

Overview		Blood Culture	PT80390	Serous Fluid	PT80190
Introduction to the Clinical Laboratory	PT80060	Patient Complications	PT80510	Synovial Fluid	PT80200
Introduction to Analytic QA	PT80150	Specimen Transport & Processing		Amniotic Fluid	PT80210
Patient Safety	PT80090	Specimen Transport	PT80400	Vaginal Wet Prep	PT80470
Safety		Courier Transport	PT80410	Fern Test	PT80480
Biosafety	PT80120	Specimen Processing	PT80130	Skin KOH	PT80490
Chemical Safety	PT80260	Laboratory Skills		Microbiology	
HazCom Standard - GHS Update	PT80270	Microscopy	PT80080	Gram Stain	PT80030
Chemical Waste	PT80460	Molecular Diagnostics		Mycology	PT80070
Infection Control	PT80280	Introduction to Molecular Diagnostics	PT80420	Parasitology	PT80220
Electrical Safety	PT80290	Chemistry		Blood Bank	
Fire Safety	PT80300	Cardiac Markers	PT80160	Introduction to Transfusion	PT80010
Ergonomic Safety	PT80310	Protein Electrophoresis	PT80110	Transfusion Safety:	
UV Safety	PT80320	Urinalysis	PT80140	Ordering & Administering	PT80230
Formaldehyde Safety	PT80330	Hematology		Specimen Collection	PT80240
Dry Ice and Liquid Nitrogen Safety	PT80500	Peripheral Blood	PT80040	Testing and Issuance	PT80250
Specimen Collection		Coagulation		Immunology	
Basic Phlebotomy	PT80100	Coagulation	PT80170	Laboratory Methods	PT80050
Pediatric Phlebotomy	PT80340	Body Fluids		Anti-nuclear Antibody	PT80430
Advanced Phlebotomy	PT80350	Cerebrospinal Fluid	PT80020	Mouse Stomach Kidney	PT80440
Patient Identification	PT80360	Seminal Fluid	PT80180	ANCA	PT80450
Skin Puncture	PT80370				
Venipuncture	PT80380				

Competency Tests

All Competency Tests PT81000
Individual Competency Tests See below

Five- or ten-question multiple choice competency assessment tests (accredited for 0.5 hours of CE credit each) are published biannually on January 1st and July 1st in each category.

Pre-Analytic		Transfusion Safety:		Gram Stain	PT81050
Safety	PT81130	Ordering & Administering	PT81210	Hepatitis & HIV Ab	PT81070
Customer Service	PT81170	Specimen Collection	PT81220	Coagulation	PT81040
Patient Safety	PT81100	Analytic		Toxicology	PT81150
Phlebotomy	PT81110	Chemistry	PT81030	Semen Analysis	PT81230
Pediatric Phlebotomy	PT81180	Urinalysis	PT81160	Transfusion Safety: Testing & Issuance	PT81240
Chain of Custody	PT81190	Protein Electrophoresis	PT81120	Transfusion Service: Basic	PT81010
Specimen Processing	PT81140	Hematology	PT81060	Transfusion Service: Intermediate	PT81250
Specimen Transport	PT81200	CSF/Serous	PT81020	Anti-nuclear Antibody	PT81080
		Microbiology	PT81090	Mouse Stomach Kidney	PT81260
				ANCA	PT81270

Training Courses and Competency Tests combined

All of both Training and Competency PT80900
Individual Training and Competency combined See above

continues on the next page!



ONLINE TRAINING & COMPETENCY

POINT OF CARE

Microscopy Procedures (PPMP)

- Training Courses and Competency Assessment

PPMP Training Courses

PT80520

PPMP Competency Assessment

PT81900

PPMP Training and PPMP Competency together

PT81920

Includes:	PPMP Training	<ul style="list-style-type: none"> • Qualitative Semen • Skin KOH • Urine Sediment • Vaginal Wet Prep 	PPMP Competency	<ul style="list-style-type: none"> • Pinworm • Qualitative Semen • Skin KOH • Urine Sediment 	<ul style="list-style-type: none"> • Vaginal KOH • Vaginal Wet Prep
	<ul style="list-style-type: none"> • Basic Microscopy • Fern Test • Pinworm 	<ul style="list-style-type: none"> • Fecal WBC • Fern Test • Nasal Eosinophils 			

Waived Test Kits & POC Instruments (WPOC)

- Competency Assessment

WPOC Competency Assessment

PT81910

WPOC Add-on to any Training and/or Competency

PT81913

Includes:	<ul style="list-style-type: none"> • AICNOW+ Glucose Meter • Aceava Mono Cassette • Accu-Chek Aviva • Accu-Chek Inform II • Amniotest • AmniSure • AVOXimeter 1000E • Bayer Clinitest (5-drop method) • BD Directigen EZ Flu AB • BD Directigen EZ RSV • BiliChek • BinaxNOW Influenza A&B • BinaxNOW RSV • BioStar Aceava 	<ul style="list-style-type: none"> • Strep A • Chemstrip 10 SG • Cholestech LDX - AST/ALT • Clearview hCG II • Clinitex - Clinitest hCG • Clinitex - Multistix 10 SG • Clinitex 50 • CLOtest • CoaguChek XS Plus PT/INR • Coloscan Fecal Occult Blood • ColoScreen • DCA 2000 • DCA Vantage • ESR • Gastrocult 	<ul style="list-style-type: none"> • HemaPrompt FG • Hemocult/ Hemocult II • Hemocult Sensa • Hemochron ACT+ • Hemochron ACT-LR • Hemochron Signature Elite • HemoCue 201 Glucose • HemoCue B-Hemoglobin • HemoCue Hb 201 DM • HemoCue Hb 201+ • HemoCue WBC • i-STAT - ACT • i-STAT - G3 • i-STAT - Operations • i-STAT - CG8+ 	<ul style="list-style-type: none"> • ICON HP (H. pylori) • Ketostix • LeadCare II • McKesson HCG Combo Cassette • McKesson hCG Urine • Multistix 10 SG • Nitrazine Paper • Nova StatSensor Creatinine Meter • Nova StatStrip Glucose Meter • OneScreen Multiple Drug Screen Cup • OraQuick Advance Rapid HIV-1/2 Ab Test • OSOM Card Pregnancy Test • OSOM hCG 	<ul style="list-style-type: none"> • Combo • OSOM Strep A • OSOM Ultra Strep A • pHydriion Papers • Precision XceedPro • Propper Seracult • QuickTox Drug Screen • QuickVue Dipstick Strep A • QuickVue hCG • QuickVue hCG Combo • QuickVue Influenza A+B • QuickVue Strep A • QuickVue+ Combo hCG • Rapid Tox 	<ul style="list-style-type: none"> • Buprenorphine • Refractometer, Urine Specific Gravity • Remel Rapid Flu AB • Signify Mono • SP hCG Combo • SP pH Indicator Strips • SP Strep A Dipstick • Status Mono • Sure-Vue Fecal Occult Blood • Sure-Vue hCG Stat • Triage Cardiac Panel • Uni-Gold Recombigen HIV • Uristix • Urisyis 1100
------------------	--	---	--	---	--	--

MTS LECTURE LIBRARY SUBSCRIPTION

PT81800

Subscription provides access to a monthly, live 1 hour webinar primarily focused on Laboratory Management topics. Subscribers may share the access with all employees in their organization. After participating in each webinar, users have the option to complete a test to earn 1.0 CE credits.

This subscription also provides the user access to the library of more than 60 archived lectures. Each lecture is archived and available on their MTS account approximately one month after the presentation date.

Upon completion of the archived lecture the user will be able to complete a 10 question test and then earn 1.0 CE credits.



ASSAYED SAMPLE SETS

Assayed Sample Set products provide high-quality samples which can be used for test validation, method correlation, calibration verification/linearity, or employee training and/or competency requirements.

To order Assayed Sample Sets, [submit an order form online at wslhpt.org](https://www.wslhpt.org).

Blood Lead (VSPB)

Item PT07030

Blood lead assayed sample sets include samples which cover the analytical range of most instruments with the target value and acceptable range for each sample. Orders include five samples in the following ranges: 2-5 ug/dL, 10-15 ug/dL, 20-25 ug/dL, 35-40 ug/dL, and 45-50 ug/dL. Sample ranges are subject to change due to sample availability.

Five samples per shipment

Blood Lead (VSBL)

Item PT07020

Blood lead assayed sample sets include samples which cover the analytical range of most instruments with the target value and acceptable range for each sample. Orders include three samples in the following ranges: 2-5 ug/dL, 20-25 ug/dL, and 45-50 ug/dL. Sample ranges are subject to change due to sample availability.

Three samples per shipment

Anti-HIV (VSHV)

Item PT07010

Includes an instruction page with worksheet and a sealed envelope containing expected test results. Samples are subject to availability. Compatible with rapid and traditional testing methods used to test for Anti-HIV-1 or Anti-HIV-1/2 (antibody).

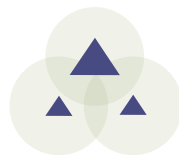
Five liquid samples per shipment

HIV Ag/Ab Combo (VSHVC)

Item PT07070

Includes an instruction page with worksheet and a sealed envelope containing expected test results. Samples are subject to availability. Compatible with Alere Determine HIV Combo rapid kit and automated combo assays used to detect HIV-1/2 antibody and HIV-1 p24 Antigen.

Five liquid samples per shipment



ADDITIONAL PRODUCTS

Accuracy Monitoring Products

Provided in partnership with CEQAL. Accuracy Monitoring Products offering 100% human material samples with target values assigned by reference method or gravimetric additions.

[View available products](#) and [submit an order form](#) online at wslhpt.org or contact customer service at (800) 462-5261.

Calibration Verification/Linearity Products

Provided in partnership with AUDIT MicroControls. Calibration Verification/Linearity products can assist laboratories in meeting CLIA '88 calibration verification requirements.

Purchase includes access to AUDITOR™, a QC data reduction software tool to view group peer data, evaluate, and create reports. Shipping available in the US.

[View available products](#) and [submit an order form](#) online at wslhpt.org or contact customer service at (800) 462-5261.

Evaluation Sets

Evaluation Sets are survey validated and can be a valuable tool when troubleshooting a PT failure, new method validation, or other QA activities. Each set includes samples from one or more past PT events with corresponding statistics. These may be available to laboratories which are not current customers with WSLH PT for the analyte(s) or sub-specialty being requested.

**Please call for pricing and availability:
(800) 462-5261.**

Supplies may be limited in quantity and shelf-life.

Off-Schedule Proficiency Testing

WSLH PT can provide an off-schedule event in the case of PT failure (remedial) or for pre-licensure. We can also provide QC or past PT samples (see Evaluation Sets above) to confirm current system status. Prior to ordering off-schedule events, contact your accrediting agency to confirm necessity of formal off-schedule PT and determine timeliness of need (immediate versus this quarter, 2-day versus priority overnight delivery), as these affect pricing.

**Please call for pricing and availability:
(800) 462-5261.**

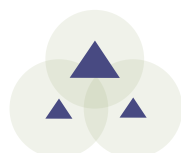
Supplies may be limited in quantity and shelf-life.

Binders

WSLH PT offers 3-ring binders to organize your proficiency testing records, which must be retained for two years, unless longer retention is required. Binders contain dividers, preprinted labels, and blank labels.

PT07000

Please indicate the number of binders desired on your order form.



SHIPPING SCHEDULE

Blood Gas

	Blood Gas 1		Blood Gas 2		Blood Gas 3	
	Ship	Due	Ship	Due	Ship	Due
Blood Gases / Electrolytes / Metabolites (BG)	03/01/21	03/19/21	07/05/21	07/23/21	11/01/21	11/19/21
Blood Gas Hemoglobin / Hematocrit add-on (BGH)	03/01/21	03/19/21	07/05/21	07/23/21	11/01/21	11/19/21
i-STAT Chemistries Plus (BGB)	03/01/21	03/19/21	07/05/21	07/23/21	11/01/21	11/19/21
CO-Oximetry (CO)	03/01/21	03/19/21	07/05/21	07/23/21	11/01/21	11/19/21
i-STAT Chemistries - Waived Methods (BGW)	03/01/21	03/19/21	07/05/21	07/23/21		

Combined: Cardiac | Special Chemistry

	Cardiac 1		Cardiac 2		Cardiac 3	
	Ship	Due	Ship	Due	Ship	Due
Bilirubin - Elevated (NB)	02/22/21	03/12/21	05/17/21	06/04/21	09/27/21	10/15/21
Cardiac Markers - 5 sample (IE)	02/22/21	03/12/21	05/17/21	06/04/21	09/27/21	10/15/21
Cardiac Markers - 3 sample (TM)			05/17/21	06/04/21	09/27/21	10/15/21

Ammonia (NH)	02/22/21	03/12/21				
Body Fluid Chemistry (PC)	02/22/21	03/12/21				
Body Fluid pH - Visual (PH)	02/22/21	03/12/21				
Hemoglobin A1c (Glycohemoglobin) - 3 samples (GH)	02/22/21	03/12/21				
Hemoglobin A1c (Glycohemoglobin) - Afinion (GHA)	02/22/21	03/12/21				
Immunoassay Chemistry (CS)	02/22/21	03/12/21				
Immunoassay Chemistry B (CSB)	02/22/21	03/12/21				
Procalcitonin (PCT)	02/22/21	03/12/21				
Spinal Fluid Chemistry (SF)	02/22/21	03/12/21				
SHBG and Testosterone (SHBG)	02/22/21	03/12/21				
Tumor Markers (MT)	02/22/21	03/12/21				
Urine Chemistry (CU)	02/22/21	03/12/21				
Urine Chemistry - Afinion (ACR)	02/22/21	03/12/21				

Special Chemistry 1

	02/22/21	03/12/21
	02/22/21	03/12/21
	02/22/21	03/12/21
	02/22/21	03/12/21
	02/22/21	03/12/21
	02/22/21	03/12/21
	02/22/21	03/12/21
	02/22/21	03/12/21
	02/22/21	03/12/21
	02/22/21	03/12/21
	02/22/21	03/12/21
	02/22/21	03/12/21
	02/22/21	03/12/21
	02/22/21	03/12/21

Special Chemistry 2

	09/27/21	10/15/21
	09/27/21	10/15/21
	09/27/21	10/15/21
	09/27/21	10/15/21
	09/27/21	10/15/21
	09/27/21	10/15/21
	09/27/21	10/15/21
	09/27/21	10/15/21
	09/27/21	10/15/21
	09/27/21	10/15/21
	09/27/21	10/15/21
	09/27/21	10/15/21
	09/27/21	10/15/21
	09/27/21	10/15/21

Chem/Endo/Tx

	Chem/Endo/Tx 1		Chem/Endo/Tx 2		Chem/Endo/Tx 3	
	Ship	Due	Ship	Due	Ship	Due
Alcohol/Ketones, serum (AM)	01/25/21	02/12/21	04/26/21	05/14/21	08/30/21	09/17/21
Chemistry/Endocrinology/Therapeutic Drugs (CET)	01/25/21	02/12/21	04/26/21	05/14/21	08/30/21	09/17/21
Chemistry - Waived Methods (WC)	01/25/21	02/12/21			08/30/21	09/17/21
hCG, serum - qualitative (HCG)	01/25/21	02/12/21	04/26/21	05/14/21	08/30/21	09/17/21
Hemoglobin A1c (Glycohemoglobin) - 5 samples (GHR)	01/25/21	02/12/21	04/26/21	05/14/21	08/30/21	09/17/21
Urine Drug Adulteration Test (UDA)	01/25/21	02/12/21	04/26/21	05/14/21	08/30/21	09/17/21
Urine Drug Screen (UD)	01/25/21	02/12/21	04/26/21	05/14/21	08/30/21	09/17/21
Urine Drug Screen - Ethyl Glucuronide (ETG)	01/25/21	02/12/21	04/26/21	05/14/21	08/30/21	09/17/21

Combined: Blood Lead(5) | BL

	BloodLead(5) 1		BloodLead(5) 2		BloodLead(5) 3	
	Ship	Due	Ship	Due	Ship	Due
Blood Lead-5 sample (PB)	03/22/21	04/09/21	06/21/21	07/09/21	11/15/21	12/03/21

Blood Lead-3 sample (BL)	03/22/21	04/09/21			11/15/21	12/03/21
--------------------------	----------	----------	--	--	----------	----------

	03/22/21	04/09/21
--	----------	----------

	11/15/21	12/03/21
--	----------	----------

SHIPPING SCHEDULE, CONT.

Combined: Coag | Coag QA | Heme Reg*

	Coag 1		Coag 2		Coag 3	
	Ship	Due	Ship	Due	Ship	Due
Coagulation - Basic (CA)	02/15/21	03/05/21	06/07/21	06/25/21	09/13/21	10/01/21
PT / INR - CoaguChek XS / Plus / Pro (PXS)	02/15/21	03/05/21	06/07/21	06/25/21	09/13/21	10/01/21
PT / INR - i-STAT and Coag-Sense (PRC)	02/15/21	03/05/21	06/07/21	06/25/21	09/13/21	10/01/21
	Coag QA 1				Coag QA 2	
Activated Clotting Time (CT)	02/15/21	03/05/21			09/13/21	10/01/21
D-Dimer (DD)	02/15/21	03/05/21			09/13/21	10/01/21
INR - CoaguChek XS / Plus - Waived Methods (CXSW)	02/15/21	03/05/21			09/13/21	10/01/21
INR - Coag-Sense - Waived Methods (CW)	02/15/21	03/05/21			09/13/21	10/01/21
	Heme Reg 1		Heme Reg 2		Heme Reg 3	
Hematology - Cell Identification (XI)	02/15/21	03/05/21	06/07/21	06/25/21	09/13/21	10/01/21
Hematology - Comprehensive (AF1-5)	02/15/21	03/05/21	06/07/21	06/25/21	09/13/21	10/01/21
Hematology - Limited (AT)	02/15/21	03/05/21	06/07/21	06/25/21	09/13/21	10/01/21
Hematology - Limited - Sysmex (AS)	02/15/21	03/05/21	06/07/21	06/25/21	09/13/21	10/01/21
Reticulocytes - Beckman Coulter (RTB)	02/15/21	03/05/21			09/13/21	10/01/21
Reticulocytes - Manual & some automated (RT)	02/15/21	03/05/21			09/13/21	10/01/21
Reticulocytes - Sysmex (RTS)	02/15/21	03/05/21			09/13/21	10/01/21

***Delivery for these products will be via overnight courier. Customers must make arrangements to accept delivery and have the package routed immediately to the lab for appropriate handling/storage.**

Misc QA POC

	Misc QA POC 1		Misc QA POC 2	
	Ship	Due	Ship	Due
Body Fluid Cell Count - Automated (BFA)	04/05/21	04/23/21	10/18/21	11/05/21
Body Fluid Cell Count - Manual (BFM)	04/05/21	04/23/21	10/18/21	11/05/21
Body Fluid Microscopy (BF)	04/05/21	04/23/21	10/18/21	11/05/21
Fecal Lactoferrin (LF)	04/05/21	04/23/21	10/18/21	11/05/21
Fecal Occult Blood (OC)	04/05/21	04/23/21	10/18/21	11/05/21
Gastric Occult Blood (GO)	04/05/21	04/23/21	10/18/21	11/05/21
Glucose / Hemoglobin - HemoCue - Waived Methods (HWG)	04/05/21	04/23/21	10/18/21	11/05/21
Glucose, Whole Blood - 3 sample (WBG)	04/05/21	04/23/21	10/18/21	11/05/21
Glucose, Whole Blood - 5 sample (WBG)	04/05/21	04/23/21	10/18/21	11/05/21
Group A Strep Antigen - Waived Methods (WS)	04/05/21	04/23/21	10/18/21	11/05/21
Hematocrit - Waived Methods (HW)	04/05/21	04/23/21	10/18/21	11/05/21
Hemoglobin - HemoCue Hb 801 - Waived (HWH)	04/05/21	04/23/21	10/18/21	11/05/21
Sedimentation Rate (SR)	04/05/21	04/23/21	10/18/21	11/05/21
Sedimentation Rate - iSED and Alifax (SRI)	04/05/21	04/23/21	10/18/21	11/05/21
Sedimentation Rate - Sedimat 15 & ESR Stat Plus (SRA)	04/05/21	04/23/21	10/18/21	11/05/21
Sickle Cell Screen (SK)	04/05/21	04/23/21	10/18/21	11/05/21
Point of Care / PPMP Package: (OC); (WS); (PM); (UR); (WBG)	04/05/21	04/23/21	10/18/21	11/05/21
Provider Performed Microscopy (PM)	04/05/21	04/23/21	10/18/21	11/05/21
Urinalysis / Urine hCG (UR)	04/05/21	04/23/21	10/18/21	11/05/21
Urine hCG - 5 sample (UH)	04/05/21	04/23/21	10/18/21	11/05/21
Urine Sediment Identification (SU)	04/05/21	04/23/21	10/18/21	11/05/21

SHIPPING SCHEDULE, CONT.

Blood Bank*

	Blood Bank 1		Blood Bank 2		Blood Bank 3	
	Ship	Due	Ship	Due	Ship	Due
Blood Bank (Immunohematology) - Comprehensive (AB)	03/01/21	03/19/21	06/14/21	07/02/21	10/04/21	10/22/21
Blood Bank (Immunohematology) - Limited (AB)	03/01/21	03/19/21	06/14/21	07/02/21	10/04/21	10/22/21
Blood Bank Direct Antiglobulin Test (DAT)	03/01/21	03/19/21			10/04/21	10/22/21

Fetal Hb*

	Fetal Hb 1		Fetal Hb 2	
	Ship	Due	Ship	Due
Fetal Red Cell Detection (HBF)	04/26/21	05/14/21	11/01/21	11/19/21

*Delivery for these products will be via overnight courier. Customers must make arrangements to accept delivery and have the package routed immediately to the lab for appropriate handling/storage.

Semen

	Semen 1		Semen 2	
	Ship	Due	Ship	Due
Amniotic Fluid Detection (AE)	05/24/21	06/11/21	10/25/21	11/12/21
Fetal Fibronectin (FFN)	05/24/21	06/11/21	10/25/21	11/12/21
Post-Vasectomy Semen Analysis (PV)	05/24/21	06/11/21	10/25/21	11/12/21
Sperm Count (SP)	05/24/21	06/11/21	10/25/21	11/12/21
Sperm Morphology - pre-stained slide (SMS)	05/24/21	06/11/21	10/25/21	11/12/21
Sperm Morphology - unstained slide (SM)	05/24/21	06/11/21	10/25/21	11/12/21
Sperm Motility (MOT)	05/24/21	06/11/21	10/25/21	11/12/21

Combined: Immunology | HIV/HP/SS | HIV Combo

	Immunology 1		Immunology 2		Immunology 3	
	Ship	Due	Ship	Due	Ship	Due
ANA Immunoserology (XN)	02/01/21	02/19/21	05/03/21	05/21/21	08/23/21	09/10/21
ASO Immunoserology (XS)	02/01/21	02/19/21	05/03/21	05/21/21	08/23/21	09/10/21
CRP Immunoserology (XP)	02/01/21	02/19/21			08/23/21	09/10/21
Helicobacter pylori Serology (HL)	02/01/21	02/19/21			08/23/21	09/10/21
Immunoproteins (IMP)	02/01/21	02/19/21	05/03/21	05/21/21	08/23/21	09/10/21
Infectious Disease Serology (MMV)	02/01/21	02/19/21			08/23/21	09/10/21
Lyme Disease Serology (LY)	02/01/21	02/19/21			08/23/21	09/10/21
Mono Immunoserology (ZM)	02/01/21	02/19/21	05/03/21	05/21/21	08/23/21	09/10/21
Mono Immunoserology - Waived Methods (MW)	02/01/21	02/19/21			08/23/21	09/10/21
Mycoplasma Antibody (MP)	02/01/21	02/19/21			08/23/21	09/10/21
Rheumatoid Factor Immunoserology (ZR)	02/01/21	02/19/21	05/03/21	05/21/21	08/23/21	09/10/21
Rubella Immunoserology (XU)	02/01/21	02/19/21	05/03/21	05/21/21	08/23/21	09/10/21
Rubella IgM Immunoserology (XM)	02/01/21	02/19/21			08/23/21	09/10/21
SARS-CoV-2 Serology (SCA)	02/01/21	02/19/21			08/23/21	09/10/21
Thyroid Antibodies (THY)	02/01/21	02/19/21			08/23/21	09/10/21
			HIV/HP/SS 1	HIV/HP/SS 2	HIV/HP/SS 3	
Anti-HIV (HV)	02/01/21	02/19/21	05/03/21	05/21/21	08/23/21	09/10/21
Anti-HIV - Waived Methods (HVW)	02/01/21	02/19/21			08/23/21	09/10/21
Hepatitis (YB)	02/01/21	02/19/21	05/03/21	05/21/21	08/23/21	09/10/21
Syphilis Serology (SS)	02/01/21	02/19/21	05/03/21	05/21/21	08/23/21	09/10/21
			HIV Combo 1	HIV Combo 2	HIV Combo 3	
HIV Ag/Ab Combo (HVC)	02/01/21	02/19/21	05/03/21	05/21/21	08/23/21	09/10/21

SHIPPING SCHEDULE, CONT.

CRE

Carbapenem Resistance Detection (CR)

CRE 1

Ship	Due
03/29/21	04/16/21

CRE 2

Ship	Due
10/04/21	10/22/21

Combined: Bacti Reg | SP Micro

Bacterial Antigens for meningitis (BA)
 Bacteriology - Comprehensive (MC)
 Bacteriology - Limited (MC)
 Blood Culture (CB)
 Clostridium difficile (CD)
 CT/GC Detection (AC)
 Enteric Pathogens (NP)
 GI Multiplex (EP)
 Gram Stain (GS)
 Group A Strep Antigen (SA)
 Group A Strep (ST)
 Group B Strep / Neisseria gonorrhoeae (SB)
 Legionella Antigen (LGA)
 Meningitis Multiplex (MEP)
 MRSA / VRE (MR)
 Throat / Urine Bacteriology (TU)
 Throat / Urine Bacteriology - Limited (TU)
 Urine Culture (UC)
 Vaginal Pathogens (VP)
 VP Molecular (VPM)

Bacti Reg 1

Ship	Due
02/08/21	02/26/21
02/08/21	02/26/21
02/08/21	02/26/21
02/08/21	02/26/21
02/08/21	02/26/21
02/08/21	02/26/21
02/08/21	02/26/21
02/08/21	02/26/21
02/08/21	02/26/21
02/08/21	02/26/21
02/08/21	02/26/21
02/08/21	02/26/21
02/08/21	02/26/21
02/08/21	02/26/21
02/08/21	02/26/21
02/08/21	02/26/21
02/08/21	02/26/21
02/08/21	02/26/21
02/08/21	02/26/21
02/08/21	02/26/21
02/08/21	02/26/21
02/08/21	02/26/21
02/08/21	02/26/21
02/08/21	02/26/21
02/08/21	02/26/21
02/08/21	02/26/21

Bacti Reg 2

Ship	Due
06/01/21	06/18/21
06/01/21	06/18/21
06/01/21	06/18/21
06/01/21	06/18/21
06/01/21	06/18/21
06/01/21	06/18/21
06/01/21	06/18/21
06/01/21	06/18/21
06/01/21	06/18/21
06/01/21	06/18/21
06/01/21	06/18/21
06/01/21	06/18/21
06/01/21	06/18/21
06/01/21	06/18/21
06/01/21	06/18/21
06/01/21	06/18/21
06/01/21	06/18/21
06/01/21	06/18/21
06/01/21	06/18/21
06/01/21	06/18/21
06/01/21	06/18/21
06/01/21	06/18/21
06/01/21	06/18/21
06/01/21	06/18/21
06/01/21	06/18/21
06/01/21	06/18/21

Bacti Reg 3

Ship	Due
09/07/21	09/24/21
09/07/21	09/24/21
09/07/21	09/24/21
09/07/21	09/24/21
09/07/21	09/24/21
09/07/21	09/24/21
09/07/21	09/24/21
09/07/21	09/24/21
09/07/21	09/24/21
09/07/21	09/24/21
09/07/21	09/24/21
09/07/21	09/24/21
09/07/21	09/24/21
09/07/21	09/24/21
09/07/21	09/24/21
09/07/21	09/24/21
09/07/21	09/24/21
09/07/21	09/24/21
09/07/21	09/24/21
09/07/21	09/24/21
09/07/21	09/24/21
09/07/21	09/24/21
09/07/21	09/24/21
09/07/21	09/24/21
09/07/21	09/24/21
09/07/21	09/24/21

SP Micro-A 1

02/08/21	02/26/21
02/08/21	02/26/21
02/08/21	02/26/21
02/08/21	02/26/21

SP Micro-A 2

06/01/21	06/18/21
06/01/21	06/18/21
06/01/21	06/18/21
06/01/21	06/18/21

SP Micro-A 3

09/07/21	09/24/21
09/07/21	09/24/21
09/07/21	09/24/21
09/07/21	09/24/21

Blood Parasites (PAB)
 Giardia / Cryptosporidium Antigen (GI)
 Mycology - Cryptococcal Antigen (MYC)
 Parasitology - Comprehensive (PA)

SP Micro-B 1

02/08/21	03/19/21
02/08/21	03/19/21

SP Micro-B 2

06/01/21	07/09/21
06/01/21	07/09/21

SP Micro-B 3

09/07/21	10/15/21
09/07/21	10/15/21

Mycology - Dermatophyte (DM)
 Mycology - Yeast (YE)

SP Micro-C 1

02/08/21	04/09/21
----------	----------

SP Micro-C 2

06/01/21	07/30/21
----------	----------

SP Micro-C 3

09/07/21	11/05/21
----------	----------

Mycology - Comprehensive (MY)

Bioterrorism Preparedness

Bioterrorism Preparedness Exercise (BPE)

Bioterrorism Prep 1

Ship	Due
04/05/21	04/23/21

Bioterrorism Prep 2

Ship	Due
10/11/21	10/29/21

SHIPPING SCHEDULE, CONT.

Frozen Micro*

Bordetella by Molecular Methods (BOR)
 Rabies by DFA (RA)
 Rabies by dRIT (RA)

Frozen Micro 1		Frozen Micro 2	
Ship	Due	Ship	Due
04/19/21	05/07/21	10/25/21	11/12/21
04/19/21	05/07/21	10/25/21	11/12/21
04/19/21	05/07/21	10/25/21	11/12/21

*Delivery for these products will be via overnight courier. Customers must make arrangements to accept delivery and have the package routed immediately to the lab for appropriate handling/storage.

Combined: Micro QA | Viral

Bacterial Vaginosis Detection (BV)
 Group A Strep Molecular - Waived Methods (WSM)
 H. pylori Stool Antigen (HPSA)
 India Ink (IND)
 KOH Slides (KOH)
 Mycoplasma genitalium Molecular (MG)
 Rapid Urease (RUR)
 Shiga Toxin (SHG)
 Trichomonas Molecular (TVM)
 Trichomonas OSOM (TV)

Micro QA 1

Ship	Due
04/12/21	04/30/21
04/12/21	04/30/21
04/12/21	04/30/21
04/12/21	04/30/21
04/12/21	04/30/21
04/12/21	04/30/21
04/12/21	04/30/21
04/12/21	04/30/21
04/12/21	04/30/21
04/12/21	04/30/21
04/12/21	04/30/21
04/12/21	04/30/21

Micro QA 2

Ship	Due
10/11/21	10/29/21
10/11/21	10/29/21
10/11/21	10/29/21
10/11/21	10/29/21
10/11/21	10/29/21
10/11/21	10/29/21
10/11/21	10/29/21
10/11/21	10/29/21
10/11/21	10/29/21
10/11/21	10/29/21
10/11/21	10/29/21
10/11/21	10/29/21

Viral 1

	Ship	Due
HPV Molecular (HPV)	01/19/21	02/05/21
HSV Molecular (HSV)	01/19/21	02/05/21
Respiratory Multiplex (RP)	01/19/21	02/05/21
SARS-CoV-2 Antigen		
SARS-CoV-2 Molecular - 5 Samples (CM)	01/19/21	02/05/21
SARS-CoV-2 Molecular - 3 Samples (CMW)		
Viral Antigens - Limited (VA)	01/19/21	02/05/21
Viral Antigens - Waived Methods (VCW)		
Viral Antigens with Rotavirus (VA)	01/19/21	02/05/21

Viral 2

Ship	Due
04/12/21	04/30/21
04/12/21	04/30/21
04/12/21	04/30/21
04/12/21	04/30/21
04/12/21	04/30/21
04/12/21	04/30/21
04/12/21	04/30/21
04/12/21	04/30/21
04/12/21	04/30/21
04/12/21	04/30/21
04/12/21	04/30/21
04/12/21	04/30/21

Viral 3

Ship	Due
10/11/21	10/29/21
10/11/21	10/29/21
10/11/21	10/29/21
10/11/21	10/29/21
10/11/21	10/29/21
10/11/21	10/29/21
10/11/21	10/29/21
10/11/21	10/29/21
10/11/21	10/29/21
10/11/21	10/29/21
10/11/21	10/29/21
10/11/21	10/29/21

Combined: TB

Acid Fast Stain (MA)
 M. tuberculosis by Molecular Methods (TB5)

TB-A 1

Ship	Due
03/29/21	04/16/21
03/29/21	04/16/21

TB-A 2

Ship	Due
10/04/21	10/22/21
10/04/21	10/22/21

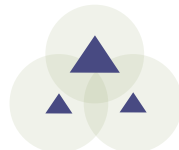
TB-B 1

03/29/21	05/28/21
----------	----------

TB-B 2

10/04/21	12/03/21
----------	----------

Mycobacteriology Culture (MB)



INDEX

A

ABO group	27
A/C ratio	18
Acetaminophen	14
Acetaminophen, urine	19
Acetone	11
6-AM (6-Acetylmorphine)	19
Acid-fast stain	43
Activated clotting time (ACT)	20
Activated partial thromboplastin time (APTT)	20
Adenovirus	37, 48, 50
Aerobic Actinomycetes identification	44
Aeromonas	36
Alanine transferase (ALT)	13, 14
Albumin	13, 14
Albumin, body fluid	12
Alcohol (ethanol)	11
Alcohol (ethanol), urine	19
Alkaline phosphatase (ALKP)	13, 14
Alpha-1 Antitrypsin (AAT)	30
Alpha-fetoprotein	14
Amikacin	14
Ammonia	11
Amniotic fluid detection	51
Amphetamines	19
Amylase	13, 14
Amylase, body fluid	12
Amylase, urine	18
Anaerobic bacteria culture	34
Anaplasma species	46
Antibody identification, blood bank	27
Anti-HIV	29, 61
Antimicrobial susceptibility	34, 41
Antinuclear antibody (ANA)	28
Antistreptolysin O (ASO)	28
Anti-Thyroglobulin	32
Anti-Thyroid Peroxidase	32
Aspartate transferase (AST)	13, 14
Astrovirus	37

B

Babesia species	46
Bacterial vaginosis detection	33, 42
Barbiturates	19
Benzodiazepines	19
Beta-2 Microglobulin	18
Beta-hydroxybutyrate	11
Bilirubin, direct	11, 14
Bilirubin, total	11, 13, 14
Bilirubin, urine	53, 54
Bioterrorism Preparedness Exercise	35
Blood Bank	27
Blood culture	34, 35
Blood Gases	8, 9
Blood Lead	12, 61
Blood parasite identification	46
BNP	10
Bordetella	35, 48

Borrelia burgdorferi (Lyme disease)	30
Buprenorphine	19

C

C. difficile toxin and/or antigen detection	34, 36, 37
CA 125	18
CA 15-3	18
CA 19-9	18
CA 27.29	18
Calcium, ionized	8
Calcium, total	13, 14
Calcium, urine	18
Campylobacter	36, 37
Candida detection	42
Cannabinoids (THC)	19
Carbamazepine	14
Carbapenem resistance	35
Carbon dioxide (CO ₂)	8, 13, 14
Carboxyhemoglobin	9
Carcinogenic embryonic antigen (CEA)	16
Cardiac Markers	10
Carisoprodol	19
Cell identification, body fluid	51
Cell identification, hematology	24
Chemistry - Body Fluid	12
Chemistry - Immunoassay	16
Chemistry - Spinal Fluid	17
Chemistry - Urine	18
Chemistry - Waived Methods	9, 13
Chlamydia trachomatis detection	36
Chlamydomydia pneumoniae	48
Chloride	8, 9, 13, 14
Chloride, spinal fluid	17
Chloride, urine	18
Cholesterol, body fluid	12
Cholesterol, HDL	13, 14
Cholesterol, LDL (calculated)	13, 14
Cholesterol, LDL (measured)	14
Cholesterol, total	13, 14
CK-MB	10
Coagulation	20, 21
Cocaine metabolites	19
Compatibility testing	27
Complement C3	30
Complement C4	30
Coronavirus	32, 48, 49
Cortisol	14
Cotinine	19
C-peptide	17
C-reactive protein (CRP)	10, 28
Creatine Kinase (CK)	10, 13, 14
Creatinine	8, 9, 13, 14
Creatinine, body fluid	12
Creatinine, urine	18, 19
Cryptococcal antigen detection	44
Cryptococcus neoformans/gattii	40
Cryptosporidium detection	37, 46
Crystal identification, body fluid	51
Cyclospora	37

INDEX

Cytomegalovirus (CMV) 40

D

DAT 27
D-dimer 10, 20
Dermatophyte 44
DHEA Sulfate 16
Digoxin 14

E

EDDP 19
Ehrlichia species 46
Endocrinology 14
Entamoeba histolytica 37
Enteric pathogen identification 34, 36
Enterovirus (EV) 40
Eosinophils, nasal smear 53, 54
Erythrocyte count (RBC), blood 23
Erythrocyte count (RBC), body fluid 51
Erythrocyte sedimentation rate 25
Escherichia coli (toxigenic) 37
Escherichia coli K1 33, 40
Escherichia coli O157:H7 36
Estradiol 16
Ethanol (alcohol) 11
Ethanol (alcohol), urine 19
Ethyl Glucuronide (EtG) 19

F

Fecal smear for leukocytes 53, 54
Fentanyl 19
Fern test 53, 54
Ferritin 16
Fetal fibronectin 52
Fetal hemoglobin 26
Fetal Screen 26
Fetal Red Cell Detection 26
Fibrinogen 20
Filarial worms 46
Folate 16
Follicle stimulating hormone (FSH) 16
Free thyroxine (FT4) 14
Free triiodothyronine (FT3) 14
Fungus Identification 44

G

Gamma glutamyltransferase (GGT) 13, 14
Gardnerella detection 42
Gentamicin 14
GI multiplex panel 37
Giardia 37, 46
Glucose 8, 9, 13, 14
Glucose, body fluid 12
Glucose, spinal fluid 17
Glucose, urine 18, 53, 54
Glucose, whole blood 15
Glycohemoglobin (Hemoglobin A1c) 16

Gram stain 34, 35, 37, 41

H

Haemophilus influenzae 40
Haemophilus influenzae type b 33
hCG, serum 14
hCG, urine 53, 54
Helicobacter pylori (total antibody) 28
Helicobacter pylori Antigen, Stool 39
Hematocrit 8, 9, 23, 26
Hematocrit, waived methods 9, 26
Hematology 22, 23, 24, 25, 26
Hemoglobin 8, 9, 15, 23
Hemoglobin A1c (Glycohemoglobin) 16
Hemoglobin/Blood, urine 53, 54
Hemoglobin F 26
Hemoglobin, waived methods 9, 15
Hepatitis - Anti-HAV, IgM 29
Hepatitis - Anti-HBc (total antibody) 29
Hepatitis - Anti-HBc, IgM 29
Hepatitis - Anti-HBs 29
Hepatitis - Anti-HCV 29
Hepatitis - HBsAg 29
Herpes Simplex virus (HSV) 40, 48
HIV (Anti-HIV) 29, 61
HIV-p24 Antigen 29, 61
Homocysteine 16
HPV Genotyping 48
hs-CRP 10
Human herpesvirus 6 (HHV-6) 40
Human metapneumovirus 48
Human Papillomavirus (HPV) 48
Human parechovirus (HPeV) 40

I

IG% 23
IgA 30
IgE 30
IGFBP, amniotic fluid 51
IgG 30
IgM 30
Immunoproteins 30
India Ink (encapsulated yeast detection) 45
Infectious mononucleosis 30, 31
Influenza 48, 50
INR 20, 21
Insulin 17
Ionized calcium 8
Ionized magnesium 8
IRF 24
Iron binding capacity (TIBC), calculated 14
Iron binding capacity (TIBC), measured 14
Iron, total 14

K

Ketones 11
Ketones, urine 53, 54
KOH (skin & vaginal) 53, 54

INDEX

KOH Preparation 44

L

Lactate (Lactic acid) 8, 14
Lactate (Lactic acid), spinal fluid 17
Lactate dehydrogenase (LDH) 14
Lactate dehydrogenase (LDH), body fluid 12
Lactate dehydrogenase (LDH), spinal fluid 17
Lactoferrin 51
Lead, blood 12, 61
Legionella antigen 39
Leukocyte count (WBC), blood 23
Leukocyte count (WBC), body fluid 51
Leukocyte esterase 53, 54
Leukocytes, fecal smear 53, 54
Lipase 14
Listeria monocytogenes 40
Lithium 14
Luteinizing hormone (LH) 16
Lyme disease (*Borrelia burgdorferi*) 30

M

Magnesium 14
Magnesium, ionized 8
Magnesium, urine 18
MCV 23
MDMA (Ecstasy) 19
Measles IgG, IgM 30
Meningitis Multiplex 40
Meperidine 19
Methadone 19
Methamphetamines 19
Methaqualone 19
Methemoglobin 9
Methicillin-resistant *Staph aureus* (MRSA) 34, 40
Microalbumin 18
Modified acid-fast stain 46
Mold, yeast, and yeast-like organism identification 44
Mononucleosis infectious 30, 31
MPV 23
Mumps IgG, IgM 30
Mycobacteria culture 43
Mycobacteriology 43
Mycobacterium tuberculosis detection 43
Mycology 44, 45
Mycoplasma antibody 31
Mycoplasma genitalium 40
Mycoplasma pneumoniae 48
Myoglobin 10

N

Nasal smear for eosinophils 53, 54
Neisseria gonorrhoeae culture 34, 39
Neisseria gonorrhoeae molecular 36
Neisseria meningitidis 40
Neisseria meningitidis group A, B, C, Y, W135 33
Nitrites 19, 53, 54
Norovirus 37

NT-proBNP 10
Nucleated red blood cells (NRBC) 23

O

Occult blood (fecal) 52, 53
Occult blood (gastric) 52
Opiates 19
Osmolality 14
Osmolality, urine 18
Oxidants 19
Oxycodone 19
Oxyhemoglobin 9

P

p24 Antigen 29
PAMG-1 protein, amniotic fluid 51
Parainfluenza 48
Parasitology 46, 47
pCO₂ 8
Permanent stain (for parasitology) 46
pH, amniotic fluid 12
pH, blood 8
pH, body fluid 12
pH, gastric 12, 52
pH, urine 19, 53, 54
Phencyclidine (PCP) 19
Phenobarbital 14
Phenytoin (Dilantin) 14
Phosphorus 13, 14
Phosphorus, urine 18
Pinworm preparation 53, 54
Plasmodium species 46
Platelet count 23
Plesiomonas 36, 37
pO₂ 8
Post-vasectomy 56
Potassium 8, 9, 13, 14
Potassium, spinal fluid 17
Potassium, urine 18
PPI2/AFP, amniotic fluid 51
Prealbumin 16
Procalcitonin 17
Progesterone 16
Prolactin 16
Propoxyphene 19
Prostate-specific antigen (PSA), free 18
Prostate-specific antigen (PSA), total 16
Protein, body fluid 12
Protein, spinal fluid 17
Protein, total 13, 14
Protein, urine 18, 53, 54
Protine (PT) 20, 21
Provider Performed Microscopy 53, 54
PTH, intact 17

R

Rabies Antigen 48
Rapid Urease 39

INDEX

RBC (Erythrocyte count), blood	23
RBC (Erythrocyte count), body fluid	51
RDW	23
Re-He	24
Respiratory Multiplex Panel	48
Respiratory syncytial virus (RSV)	48, 50
Reticulocyte count	24
Rh (D) typing	27
Rheumatoid factor	31
Rhinovirus/Enterovirus	48
Rifampin resistance screen (M. tuberculosis)	43
Rotavirus	37, 50
Rubella IgG, IgM	31, 32
Rupture of fetal membranes	12, 51

S

Salicylate	14
Salmonella	36
Sapovirus	37
SARS-CoV-2	32, 48, 49
Sex Hormone-Binding Globulin	17
Shiga toxin	41
Shigella	36, 37
Sickle cell screen	26
Sodium	8, 9, 13, 14
Sodium, spinal fluid	17
Sodium, urine	18
Specific gravity	19, 53, 54
Sperm count	56
Sperm morphology	56
Sperm motility	57
Sperm progressive motility	57
Staphylococcus aureus	40
Stool wet mount (for parasitology)	46
Strep A antigen detection	34, 38, 41, 53
Strep A culture	34, 38, 41
Strep B antigen	33
Strep B culture	34, 39
Strep B molecular	34, 39
Streptococcus agalactiae	40
Streptococcus pneumoniae	33, 40
Syphilis Nontreponemal	32
Syphilis Treponemal	32

T

T3 Uptake / T-Uptake	14
Testosterone, bioavailable	17
Testosterone, free	17
Testosterone, total	16, 17
Theophylline	14
Therapeutic Drugs	14
Thyroglobulin Antibody	32
Thyroid Antibodies	32
Thyroid Peroxidase/ Microsomal Antibody	32
Thyroid-stimulating hormone (TSH)	14
Thyroxine (T4)	14
TIBC (Iron binding capacity), calculated	14
TIBC (Iron binding capacity), measured	14

Tobramycin	14
Tramadol	19
Transferrin	16
Trichomonas detection	42, 47
Tricyclic antidepressants	19
Triglycerides	13, 14
Triglycerides, body fluid	12
Triiodothyronine (T3)	14
Troponin I	10
Troponin T	10
Trypanosoma species	46
Tumor Markers (AFP)	14
Tumor Markers	14, 18

U

UIBC	14
Unexpected antibody detection	27
Urea nitrogen, blood (BUN)	8, 9, 13, 14
Urea nitrogen, urine	18
Urease	39
Uric acid	13, 14
Uric acid, urine	18
Urinalysis	53, 54
Urine adulteration test	19
Urine culture	34, 41
Urine drug screen	19
Urine hCG	53, 54
Urine sediment	53, 54, 55
Urobilinogen	53, 54

V

Vaginal wet preparation	53, 54
Valproic acid	14
Vancomycin	14
Vancomycin-resistant Enterococcus (VRE)	34, 40
Varicella zoster IgG, IgM	30
Varicella zoster virus (VZV)	40
Vibrio	36, 37
Virology	48, 49, 50
Vitamin B12	16
25-OH Vitamin D, total	17

W

WBC (Leukocyte count), blood	23
WBC (Leukocyte count), body fluid	51
WBC differential - automated	23
Whole Blood Glucose	15, 53
Wound culture	34

Y

Yeast and yeast-like organism identification	44, 45
Yersinia	36, 37

Z

Zolpidem	19
----------	----

YOUR LAB OUR MISSION

WSLH PROFICIENCY TESTING



The national public health lab that is on a mission to provide reliable, affordable, and easy-to-use proficiency testing products with rapid access to results.

From staffing productivity and ever-evolving technology to time constraints and redirected revenue, Wisconsin State Laboratory of Hygiene (WSLH) Proficiency Testing knows you are working more strategically than ever before to break down barriers to quality patient testing. Everyday behind the doors of Wisconsin's public and environmental health lab, WSLH Proficiency Testing is helping labs like yours stay creative and in control of your costs without sacrificing accurate, reliable results.

Located in the beautiful capital city of Madison, Wisconsin, WSLH Proficiency Testing is part of a national public health lab that connects you to a team of experienced Medical Technologists and to an array of relevant resources to help you overcome quality assurance challenges.

WSLH Proficiency Testing has been building a solid foundation for clinical laboratory improvement since 1966. Our program is approved by CMS and is accepted by the College of American Pathologists (CAP), The Joint Commission, and COLA.

To learn more about our products, visit wslhpt.org, or call (800) 462-5261.