

WSLH
PROFICIENCY
TESTING

CLINICAL PRODUCT CATALOG

2021

YOUR LAB, OUR MISSION

The WSLH in WSLH Proficiency Testing stands for Wisconsin State Laboratory of Hygiene, our national public health lab located in Madison, Wisconsin. As part of a national public health lab, WSLH PT provides clinical laboratories like yours reliable, affordable, and easy-to-use proficiency testing products with rapid access to results.

Questions? Contact WSLH PT Customer Service:
(800) 462-5261 | ptservice@slh.wisc.edu

TABLE OF CONTENTS

4	Why WSLH PT?
8	Chemistry - Blood Gas/Oximetry
10	Chemistry - Cardiac
11	Chemistry - General
20	Coagulation
22	Hematology
27	Immunohematology - Blood Bank
28	Immunology
33	Microbiology - Bacteriology
43	Microbiology - Mycobacteriology
44	Microbiology - Mycology
46	Microbiology - Parasitology
48	Microbiology - Virology
51	Urinalysis/Microscopy/Misc.
55	Andrology
57	Online Training and Competency
60	Index



OUR HISTORY

WSLH Proficiency Testing has been building a solid foundation for laboratory improvement since 1966. WSLH PT was developed by the Wisconsin State Lab of Hygiene's (WSLH) collaborative efforts to create proficiency testing programs that improved laboratory quality. Based in Madison, Wisconsin, WSLH PT continues to be part of a national public health laboratory with a UW-Madison affiliation. Today, we provide proficiency testing services across the United States and in countries around the world.

OUR COMMUNITY

Each of our proficiency testing programs has a dedicated Medical Technologist with at least 5 years of laboratory bench experience, extensive instrument knowledge and unparalleled customer service to support your laboratory's needs. WSLH Proficiency Testing is part of a national public health lab and is approved by CMS, and is accepted by the College of American Pathologists (CAP), The Joint Commission, and COLA.



WHY WSLH PT?

Reliable, affordable, & easy-to-use proficiency testing products

EASE THE BURDEN ON LAB STAFF

- PT Data Upload available
- Easy report access
- Flexible ordering at competitive prices
- Staggered shipments
- 14 day average turnaround time
- Wide array of QA options
- Customized continuing education
- AUDIT Linearity products available to order



HOW CAN WE BEST SERVE YOU?

We want to know! To find out more about WSLH PT, to enroll, or discuss options, visit wslhpt.org or contact customer service at (800) 462-5261.

Enrollment made easy

WSLH is proficiency testing *plus* unparalleled customer service

NEW CUSTOMERS

Submit a [New Customer PT Enrollment Form](#)

To order, submit a form online at wslhpt.org. Once a form is submitted, customer service will assign your lab a WSLH PT ID number and email you an enrollment confirmation. You can expect to receive a confirmation letter and a customized shipping schedule via email within 24 hours of order receipt.

Note: Experienced Medical Technologists are available Monday-Friday, 8:00am-4:30pm (CST) to assist you at (800) 462-5261.

CURRENT CUSTOMERS

Re-enrollment

Current customers will receive a new catalog and a re-enrollment packet via USPS that contains a list of programs that the lab was enrolled in the previous year. Review and edit selections where necessary and return forms for processing. You can expect to receive a confirmation letter and a customized shipping schedule via email once re-enrollment has been processed.

Changes to Active Enrollment or Account Information

To update contact or agency information, or add or drop PT enrollment at any time, please complete a [Customer Change Form](#) online at wslhpt.org. You will receive an updated enrollment confirmation reflecting the requested changes.

SHIPPING INFORMATION

WSLHPT provides a customized shipping schedule with your enrollment confirmation. Customers with a valid email address under "Shipping Information" on the Enrollment Form will receive an email notification for each shipment. Most packages will arrive within 2 days of the scheduled ship date. Overnight shipments are designated on the shipping calendar. Your facility must make arrangements to accept delivery and have the package routed immediately to the appropriate location for proper handling and storage.

If you do not receive samples within 2 days of the scheduled ship date, please contact WSLH PT at (800) 462-5261. **Please notify WSLH PT in advance of any address changes.** Import permits or customs forms must be provided by international customers at least 30 calendar days prior to the first scheduled shipment.

CANCELLATION OF PRODUCTS

To cancel products, complete a [Customer Change Form](#) online at wslhpt.org. All cancellations must be submitted in writing at least 30 days prior to a scheduled shipment date. A credit will be applied to your account, if appropriate. The annual processing fee is non-refundable. Refund requests will be handled on a case by case basis by the accounts receivable department.

To assure participation in all shipments, enrollment and order forms must be received by December 1st. Contact us for sample availability after December 1.



PROF
PRO

PROFICIENCY TESTING PRODUCTS

Products include one set of samples and reporting for one set of results per shipment unless otherwise specified. **Analytes and procedures listed under the Regulated column are regulated under CLIA '88.**

PROFICIENCY TESTING PRODUCTS

NEW FOR 2021

PAGE	PROGRAM
32	SARS-CoV-2 Serology (SCA)
49	SARS-CoV-2 Antigen (CVW)
49	SARS-CoV-2 Molecular 5 Samples (CM)
49	SARS-CoV-2 Molecular 3 Samples (CMW)

CHEMISTRY

▲ Blood Gas / Oximetry

Blood Gases / Electrolytes / Metabolites (BG)

Item PT01050

3mL aqueous samples compatible with most blood gas instruments including ABL, Cobas, EPOC, GEM, i-STAT, IRMA, OPTI, RAPIDLab, RAPIDPoint and OTHER systems.

Three shipments per year
Five samples per shipment

	CLIA REGULATED	UNREGULATED
ANALYTES	<ul style="list-style-type: none"> • Chloride • Creatinine • Glucose • pCO₂ • pH 	<ul style="list-style-type: none"> • pO₂ • Potassium • Sodium • Urea nitrogen (BUN)
		<ul style="list-style-type: none"> • Carbon dioxide, total • Ionized calcium • Ionized magnesium • Lactate

Blood Gas Hemoglobin / Hematocrit (BGH), add-on to BG

Add-on to BG Item PT01570

2.5mL aqueous samples. This product can only be ordered in conjunction with BG above. IL GEM and ABL90 FLEX users should report these analytes under the CO-Oximetry product below.

Three shipments per year
Five samples per shipment

	CLIA REGULATED	UNREGULATED
ANALYTES	<ul style="list-style-type: none"> • Hematocrit • Hemoglobin 	

i-STAT Chemistries PLUS (BGB)

Item PT01345

2.5mL BLUE aqueous samples intended for use on i-STAT systems. Includes Hemoglobin and Hematocrit. Single set of five samples.

Three shipments per year
Five samples per shipment

	CLIA REGULATED	UNREGULATED
ANALYTES	<ul style="list-style-type: none"> • Chloride • Creatinine • Glucose • Hematocrit • Hemoglobin • pCO₂ 	<ul style="list-style-type: none"> • pH • pO₂ • Potassium • Sodium • Urea nitrogen (BUN)
		<ul style="list-style-type: none"> • Carbon dioxide, total • Ionized calcium • Lactate

CO-Oximetry (CO)

Item PT01330

2mL samples of stabilized hemoglobin solution.

Three shipments per year
Five samples per shipment

	CLIA REGULATED	UNREGULATED
ANALYTES	<ul style="list-style-type: none"> • Hematocrit • Hemoglobin, total 	<ul style="list-style-type: none"> • Carboxyhemoglobin • Methemoglobin • Oxyhemoglobin

i-STAT Chemistries - Waived Methods (BGW)

Item PT01400

2.5mL aqueous samples intended for use on waived systems such as the i-STAT Crea, 6+, EC4+, E3+, or G cartridges. Laboratories using non-waived methods should refer to BGB or BG products on prior page.

Two shipments per year
Three samples per shipment

	CLIA REGULATED	UNREGULATED
ANALYTES		<ul style="list-style-type: none"> • Chloride • Creatinine • Glucose • Hematocrit • Hemoglobin • Potassium • Sodium • Urea nitrogen (BUN)

CHEMISTRY

▲ Cardiac

Cardiac Markers - 5 Samples (IE)

1.5mL liquid samples. Compatible with automated methods such as Abbott i-STAT, Alere Triage, Architect, Beckman Coulter, Roche, Siemens, and Vitros.

Item PT01260

Three shipments per year
Five samples per shipment

	CLIA REGULATED	UNREGULATED	
ANALYTES	<ul style="list-style-type: none"> • CK-MB • CK, total 	<ul style="list-style-type: none"> • BNP • D-dimer (Alere Triage only) • hs-CRP 	<ul style="list-style-type: none"> • Myoglobin • NT-proBNP • Troponin I • Troponin T

NOTE: For CRP methods screening for non-specific inflammatory disease, see XP product on page 28.

D-dimer in this module is for laboratories using the Alere Triage. Other instrumentation, see DD product on page 20.

Cardiac Markers - 3 Samples (TM)

1.5mL liquid samples. Compatible with automated methods such as Abbott i-STAT, Alere Triage, Architect, Beckman Coulter, Roche, Siemens, and Vitros.

Item PT01230

Two shipments per year
Three samples per shipment

	CLIA REGULATED	UNREGULATED	
ANALYTES		<ul style="list-style-type: none"> • BNP • D-dimer (Alere Triage only) • hs-CRP 	<ul style="list-style-type: none"> • Myoglobin • NT-proBNP • Troponin I • Troponin T

NOTE: For CRP methods screening for non-specific inflammatory disease, see XP product on page 28.

D-dimer in this module is for laboratories using the Alere Triage. Other instrumentation, see DD product on page 20.

Alcohol/Ketones, serum (AM)

Item PT01000

2mL liquid samples. Beta-hydroxybutyrate is compatible with instrumentation using Stanbio reagent as well as with POC meters such as Abbott Xceed Pro and Stanbio STAT-site M.

Three shipments per year
Five samples per shipment

	CLIA REGULATED	UNREGULATED
ANALYTES	<ul style="list-style-type: none"> Alcohol (ethanol) 	<ul style="list-style-type: none"> Acetone (qualitative) Acetone (semi-quantitative) Beta-hydroxybutyrate

Ammonia (NH)

Item PT01020

2mL liquid samples.

Two shipments per year
Three samples per shipment

	CLIA REGULATED	UNREGULATED
ANALYTES		<ul style="list-style-type: none"> Ammonia

Bilirubin - Elevated (NB)

Item PT01430

1mL liquid samples containing elevated levels of bilirubin similar to those found in neonates and liver disease.

Three shipments per year
Five samples per shipment

	CLIA REGULATED	UNREGULATED
ANALYTES	<ul style="list-style-type: none"> Bilirubin, total 	<ul style="list-style-type: none"> Bilirubin, direct

CHEMISTRY

▲ General

Blood Lead - 5 Samples (PB)

1mL whole blood samples.

	CLIA REGULATED	UNREGULATED
ANALYTES	• Blood lead	

Item PT01080

Three shipments per year
Five samples per shipment

Blood Lead - 3 Samples (BL)

1mL whole blood samples.

	CLIA REGULATED	UNREGULATED
ANALYTES		• Blood lead

Item PT01070

Two shipments per year
Three samples per shipment

Body Fluid Chemistry (PC)

3mL liquid samples intended to simulate pleural, peritoneal, and miscellaneous body fluids.

	CLIA REGULATED	UNREGULATED
ANALYTES		<ul style="list-style-type: none"> • Albumin • Amylase • Cholesterol • Creatinine • Glucose • LDH • pH (quantitative) • Protein • Triglycerides

Item PT01120

Two shipments per year
Three samples per shipment

NOTE: For spinal fluid, see SF product on page 16. For urine, see CU on page 18.

Body Fluid pH - Visual (PH)

1mL liquid samples intended for pH measurement by color comparison methods including amniotic and miscellaneous body fluid pH measurement. Samples are compatible with non-nitrazine and nitrazine test strips, swabs, and paper.

	CLIA REGULATED	UNREGULATED
ANALYTES		<ul style="list-style-type: none"> • pH (color comparison) • pH interpretation (ruptured, not ruptured)

Item PT01150

Two shipments per year
Three samples per shipment

NOTE: For urine pH, see UR product on page 53.

Chemistry - Waived Methods (WC)

Item PT01282

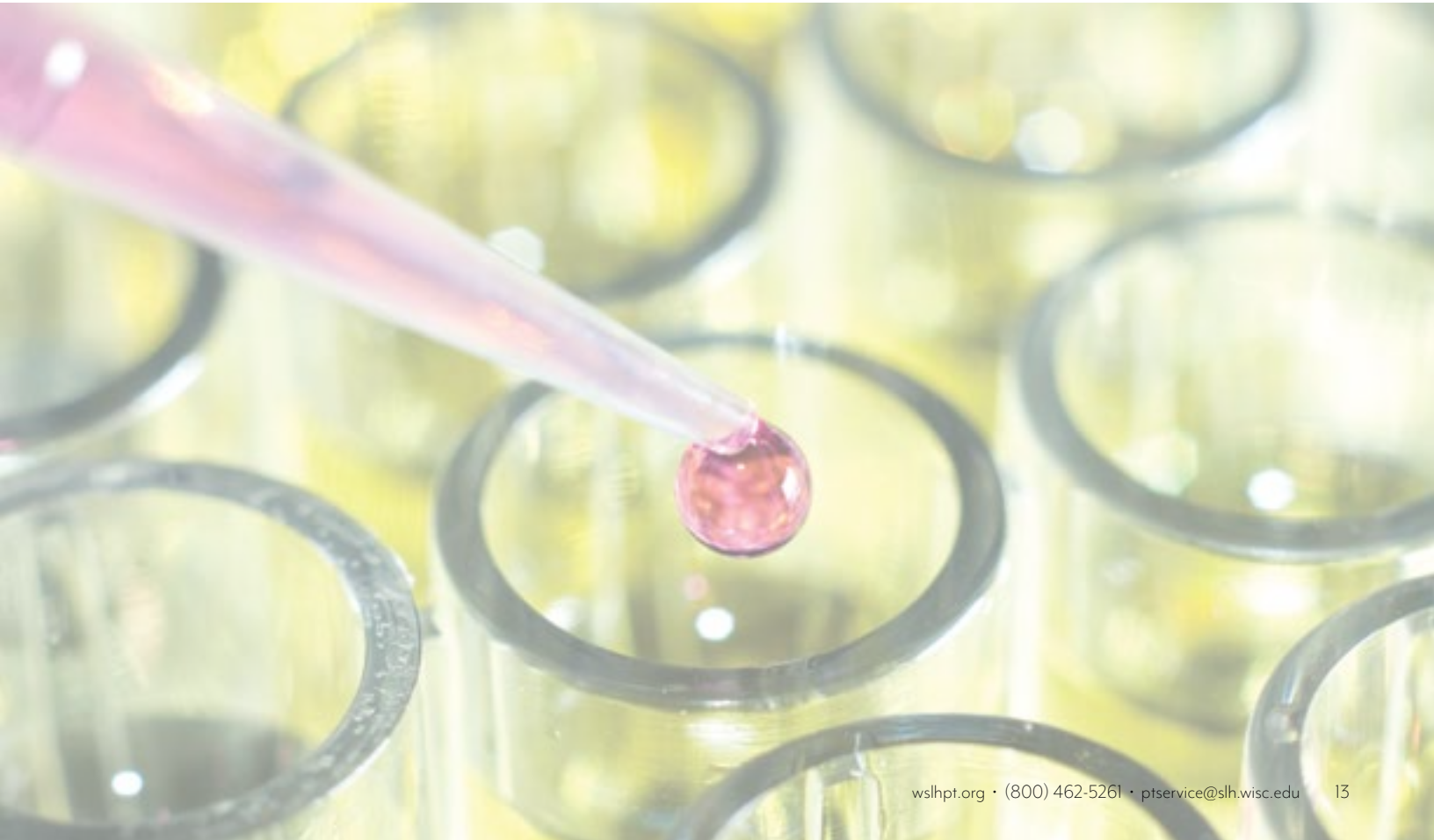
5mL liquid samples intended for instruments using waived cartridges such as CardioChek (reflectance test strips only), Cholestech LDX, Roche Accutrend, and Abaxis Piccolo (waived). Laboratories using Abaxis Piccolo non-waived cartridges should refer to the CET product on the next page.

Two shipments per year
Three samples per shipment

ANALYTES	CLIA REGULATED	UNREGULATED
		<ul style="list-style-type: none"> • ALT • Albumin • ALKP • Amylase • AST • Bilirubin, total • Calcium, total • CO₂ • Chloride • Cholesterol, HDL • Cholesterol, LDL (calculated)
		<ul style="list-style-type: none"> • Cholesterol, total • Creatine Kinase (CK) • Creatinine • GGT • Glucose • Phosphorus • Potassium • Protein, total • Sodium • Triglycerides • Urea nitrogen (BUN) • Uric acid

NOTE: For i-STAT chemistry waived cartridges, see BGW product on page 9.

For CardioChek eGLU (glucose electrochemical test strips), see WBG 3 sample product on page 15.



CHEMISTRY

▲ General

Chemistry/Endocrinology/Therapeutic Drugs (CET)

5mL liquid samples.

	CLIA REGULATED	UNREGULATED	
ANALYTES	<ul style="list-style-type: none"> • ALT • Albumin • ALKP • Alpha-fetoprotein • Amylase • AST • Bilirubin, total • Calcium, total • Carbamazepine • Chloride • Cholesterol, HDL • Cholesterol, total • Cortisol • Creatine Kinase (CK) • Creatinine • Digoxin • Gentamicin • Glucose • hCG, quantitative (serum) • Iron, total 	<ul style="list-style-type: none"> • LDH • Lithium • Magnesium • Phenobarbital • Phenytoin (Dilantin) • Potassium • Protein, total • Sodium • Theophylline • TSH • T3, total • T4, free (FT4) • T4, total • T-Uptake • Tobramycin • Triglycerides • Urea nitrogen (BUN) • Uric acid • Valproic acid 	<ul style="list-style-type: none"> • Acetaminophen • Amikacin • Bilirubin, direct • CO₂ • Cholesterol, LDL (calculated) • Cholesterol, LDL (measured) • GGT • Lactate • Lipase • Osmolality • Phosphorus • Salicylate • T3, free (FT3) • TIBC, calculated • TIBC, measured • UIBC • Vancomycin

1-11 Analytes Item PT01310
 12-21 Analytes Item PT01314
 22-30 Analytes Item PT01318
 31+ Analytes Item PT01322

Three shipments per year
 Five samples per shipment

NOTE: i-STAT users may enroll in CET for hCG quantitative. For i-STAT chemistry analytes, see BG, BGB, or BGW products on page 8, 9.

hCG, serum - Qualitative (HCG)

1mL liquid samples.

	CLIA REGULATED	UNREGULATED
ANALYTES	<ul style="list-style-type: none"> • hCG, qualitative (serum) 	

Item PT01480

Three shipments per year
 Five samples per shipment

NOTE: For Laboratories reporting both hCG quantitative and hCG qualitative, only the hCG quantitative score will be transmitted to accreditation agencies.

Glucose Whole Blood - 5 Samples (WBG)

Item PT01886

Whole blood samples intended for waived glucose meters. Samples are compatible with most blood glucose meters used for ancillary/point of care testing. Samples are NOT compatible with HemoCue Glucose 201 systems. See HWG product below.

Two shipments per year
Five samples per shipment

ANALYTES	CLIA REGULATED	UNREGULATED
		• Whole Blood Glucose

Glucose Whole Blood - 3 Samples (WBG)

Item PT01880

Whole blood samples intended for waived glucose meters. Samples are compatible with most blood glucose meters used for ancillary/point of care testing. Samples are NOT compatible with HemoCue Glucose 201 systems. See HWG product below.

Two shipments per year
Three samples per shipment

ANALYTES	CLIA REGULATED	UNREGULATED
		• Whole Blood Glucose

Glucose/Hemoglobin - HemoCue - Waived Methods (HWG)

Item PT01450

Whole blood samples intended for use with HemoCue systems. Also compatible with HemoPoint H2 and other waived hemoglobin systems. Samples are NOT compatible with HemoCue Hb 801. See HWH product below.

Two shipments per year
Three samples per shipment

ANALYTES	CLIA REGULATED	UNREGULATED
		• Whole Blood Glucose • Hemoglobin

Hemoglobin - HemoCue Hb 801 - Waived (HWH)

Item PT01455

Whole blood samples intended for use with HemoCue Hb 801.

Two shipments per year
Three samples per shipment

ANALYTES	CLIA REGULATED	UNREGULATED
		• Hemoglobin

CHEMISTRY

▲ General

Hemoglobin A1c (Glycohemoglobin) - 5 Samples (GHR)

Item PT01524

1mL whole blood samples. These samples are NOT compatible with the Afinion analyzer. See GHA product below.

Three shipments per year
Five samples per shipment

	CLIA REGULATED	UNREGULATED
ANALYTES		• Hemoglobin A1c

Hemoglobin A1c (Glycohemoglobin) - 3 Samples (GH)

Item PT01500

1mL whole blood samples. These samples are NOT compatible with the Afinion analyzer. See GHA product below.

Two shipments per year
Three samples per shipment

	CLIA REGULATED	UNREGULATED
ANALYTES		• Hemoglobin A1c

Hemoglobin A1c (Glycohemoglobin) - Afinion (GHA)

Item PT01530

0.5mL whole blood samples intended for use with the Afinion analyzer.

Two shipments per year
Three samples per shipment

	CLIA REGULATED	UNREGULATED
ANALYTES		• Hemoglobin A1c

Immunoassay Chemistry (CS)

1-5 Analytes Item PT01680

6+ Analytes Item PT01695

5mL liquid samples.

Two shipments per year
Three samples per shipment

	CLIA REGULATED	UNREGULATED
ANALYTES		<ul style="list-style-type: none"> • CEA • DHEA Sulfate • Estradiol • Ferritin • Folate • FSH • Homocysteine • LH • Prealbumin • Progesterone • Prolactin • PSA, total • Testosterone, total • Transferrin • Vitamin B12

Immunoassay Chemistry B (CSB)

Item PT01710

Lyophilized serum samples. A 2.0mL class A volumetric pipette and reagent-grade water are recommended for reconstitution.

Two shipments per year
Three samples per shipment

	CLIA REGULATED	UNREGULATED
ANALYTES		<ul style="list-style-type: none"> • 25-OH Vitamin D, total • C-peptide • Insulin • PTH, intact

Procalcitonin (PCT)

Item PT01900

Lyophilized serum samples. A 2.0mL class A volumetric pipette and reagent-grade water are recommended for reconstitution.

Two shipments per year
Three samples per shipment

	CLIA REGULATED	UNREGULATED
ANALYTES		<ul style="list-style-type: none"> • Procalcitonin

SHBG and Testosterone (SHBG)

Item PT01970

Lyophilized serum samples. A 2.0mL class A volumetric pipette and reagent-grade water are recommended for reconstitution.

Two shipments per year
Three samples per shipment

	CLIA REGULATED	UNREGULATED
ANALYTES		<ul style="list-style-type: none"> • Sex hormone-binding globulin • Testosterone, bioavailable • Testosterone, total • Testosterone, free

Spinal Fluid Chemistry (SF)

Item PT01720

2mL liquid samples.

Two shipments per year
Three samples per shipment

	CLIA REGULATED	UNREGULATED
ANALYTES		<ul style="list-style-type: none"> • Chloride • Glucose • Lactic acid • LDH • Potassium • Protein • Sodium

CHEMISTRY

▲ General

Tumor Markers (MT)

2mL liquid samples.

	CLIA REGULATED	UNREGULATED
ANALYTES		<ul style="list-style-type: none"> • Beta-2 Microglobulin • CA 125 • CA 15-3
		<ul style="list-style-type: none"> • CA 19-9 • CA 27.29 • PSA, free

Item PT01750

Two shipments per year
Three samples per shipment

NOTE: CEA and PSA, total are available under the Immunoassay Chemistry (CS) product on page 16.

Urine Chemistry (CU)

10mL liquid samples. These samples are NOT compatible with the Afinion analyzer. See ACR product below.

	CLIA REGULATED	UNREGULATED
ANALYTES		<ul style="list-style-type: none"> • A/C ratio, quantitative • A/C ratio, semi-quantitative • Amylase • Calcium • Chloride • Creatinine, quantitative • Creatinine, semi-quantitative • Glucose
		<ul style="list-style-type: none"> • Magnesium • Microalbumin, quantitative • Microalbumin, semi-quantitative • Osmolality • Phosphorus • Potassium • Protein • Sodium • Urea nitrogen • Uric acid

1-3 Analytes Item PT01780
4-10 Analytes Item PT01786
11+ Analytes Item PT01792

Two shipments per year
Three samples per shipment

Urine Chemistry - Afinion (ACR)

3mL liquid samples intended for use with the Afinion analyzer.

	CLIA REGULATED	UNREGULATED
ANALYTES		<ul style="list-style-type: none"> • A/C ratio • Microalbumin
		<ul style="list-style-type: none"> • Urine Creatinine

Item PT01960

Two shipments per year
Three samples per shipment

Urine Drug Adulteration Test (UDA)

10mL liquid samples for use with urine adulterant detection methods.

Item PT01950

Three shipments per year
Two samples per shipment

	CLIA REGULATED	UNREGULATED
ANALYTES		<ul style="list-style-type: none"> • Creatinine • Nitrites • Oxidants
		<ul style="list-style-type: none"> • pH • Specific gravity

Urine Drug Screen (UD)

10mL liquid samples intended for the qualitative detection of drugs using urine immunoassay screening procedures.

Item PT01810

Three shipments per year
Two samples per shipment

	CLIA REGULATED	UNREGULATED
ANALYTES		<ul style="list-style-type: none"> • Acetaminophen • 6-AM (6-Acetylmorphine) • Amphetamines • Barbiturates • Benzodiazepines • Buprenorphine • Cannabinoids (THC) • Carisoprodol • Cocaine metabolites • Cotinine • EDDP • Ethanol (Alcohol) • Fentanyl
		<ul style="list-style-type: none"> • MDMA (Ecstasy) • Meperidine • Methadone • Methamphetamine • Methaqualone • Opiates • Oxycodone • Phencyclidine (PCP) • Propoxyphene • Tramadol • Tricyclic antidepressants • Zolpidem

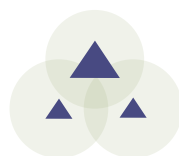
Urine Drug Screen - Ethyl Glucuronide (ETG)

5mL liquid samples intended for the qualitative detection of EtG in urine.

Item PT01980

Three shipments per year
Two samples per shipment

	CLIA REGULATED	UNREGULATED
ANALYTES		<ul style="list-style-type: none"> • Ethyl Glucuronide (EtG)



COAGULATION

COAGULATION

Activated Clotting Time (CT)

Three lyophilized samples with paired diluents, calcium chloride solutions (activator), and method-differentiated handling instructions. Compatible with HEMOCHRON, i-STAT, HemoTec, Medtronic HMS and OTHER methods.

Item PT02030

Two shipments per year
Three samples per shipment

	CLIA REGULATED	UNREGULATED
ANALYTES		<ul style="list-style-type: none"> Activated clotting time (ACT)

Coagulation - Basic (CA)

Lyophilized plasma samples. Use of a 1.0mL class A volumetric pipette and reagent-grade water are recommended for reconstitution. NOT compatible with whole blood systems (i-STAT, ITC, CoaguChek, or Coag-Sense). INR Calculation "dry exercise" is available for CAP-accredited labs.

Item PT02060

Three shipments per year
Five samples per shipment

	CLIA REGULATED	UNREGULATED
ANALYTES	<ul style="list-style-type: none"> Activated partial thromboplastin time (APTT) 	<ul style="list-style-type: none"> Protime (PT) Fibrinogen INR

D-dimer (DD)

1.0mL liquid samples. Compatible with most D-dimer kits including Sysmex CA and CS, Alere Triage, Stago, and OTHER methods. Educational D-dimer interpretation available.

Item PT02080

Two shipments per year
Three samples per shipment

	CLIA REGULATED	UNREGULATED
ANALYTES		<ul style="list-style-type: none"> D-dimer, quantitative

NOTE: Customers using Alere Triage for cardiac markers, see IE or TM product on page 10.

COAGULATION

Protime / INR - Whole Blood CoaguChek XS (PXS)

Item PT02350

Lyophilized samples intended for non-waived Roche CoaguChek XS systems. Also available to waived system users wanting more challenges per year. Waived system users reporting only INR may consider CXSW product.

Three shipments per year
Five samples per shipment

	CLIA REGULATED	UNREGULATED
ANALYTES	• Protime (PT)	• INR

INR - CoaguChek - Waived Methods (CXSW)

Item PT02320

Lyophilized samples for CoaguChek XS or CoaguChek XS Plus (waived use).

Two shipments per year
Three samples per shipment

	CLIA REGULATED	UNREGULATED
ANALYTES		• INR

Protime / INR - Whole Blood, i-STAT and Coag-Sense (PRC)

Item PT02370

Lyophilized samples intended for i-STAT systems; most i-STAT users must report both Protime and INR for proficiency testing purposes. Also compatible with Coag-Sense systems where non-waived users must report both Protime and INR. Coag-Sense waived system users reporting only INR may consider CW product.

Three shipments per year
Five samples per shipment

	CLIA REGULATED	UNREGULATED
ANALYTES	• Protime (PT)	• INR

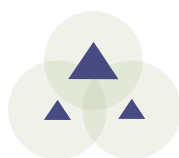
INR - Coag-Sense - Waived Methods (CW)

Item PT02310

Lyophilized samples intended for Coag-Sense (waived use).

Two shipments per year
Three samples per shipment

	CLIA REGULATED	UNREGULATED
ANALYTES		• INR



HEMATOLOGY

Hematology samples are instrument-specific. Please use the table below to choose the correct sample/instrument combination.

	CBC OR CBC WITH AUTO DIFF						RETICULOCYTES			
	AF1	AF2	AF3	AF4	AF5	AS	AT	RT	RTB	RTS
Abbott CELL-DYN 1400, 1600, 1700, 1800, Emerald							X			
Abbott CELL-DYN 3000, 3200, 3500, 3700, 4000, Ruby, Sapphire	X									
Abbott Sapphire								X		
Abacus 5	X									
ABX Micros							X			
ABX Pentra 60, 80, 120		X								
ABX Pentra XLR								X		
Beckman Coulter AcT 5 diff		X								
Beckman Coulter AcT 8/10, AcT diff/diff2							X			
Beckman Coulter DxH 500 (Includes 520, 560)			X							
Beckman Coulter DxH600, DxH800, DxH900, HmX, LH 500, LH700 series, MAXM				X					X	
Manual Reticulocyte methods								X		
Medonic M series							X			
Siemens ADVIA 120/2120									X	
Siemens ADVIA 560	X									
Sysmex XS1000i					X					
Sysmex XE series, XT series, XN series, XN-L series					X					X
Sysmex KX-21N, pocH 100i, XP-300						X				

HEMATOLOGY

Hematology - Comprehensive (AF)

Whole blood samples for automated instruments with 5-6 part differential.

	CLIA REGULATED	UNREGULATED
ANALYTES	<ul style="list-style-type: none"> Erythrocyte count (RBC) Hematocrit Hemoglobin 	<ul style="list-style-type: none"> Leukocyte count (WBC) Platelet count WBC differential, automated
		<ul style="list-style-type: none"> MCV IG% (AF5 only) IG# (AF5 only) MPV (AF4 and AF5 only) NRBC# (AF4 and AF5 only) RDW (AF4 and AF5 only)

AF1 Item PT02230
 AF2 Item PT02250
 AF3 Item PT02270
 AF4 Item PT02285
 AF5 Item PT02290

Three shipments per year
 Five samples per shipment

NOTE: Item numbers are instrument-specific.
 See Instrument Table on page 22.

HEMATOLOGY

Hematology - Limited Sysmex (AS)

Whole blood samples for Sysmex instruments with 2-3 part differential.

	CLIA REGULATED	UNREGULATED
ANALYTES	<ul style="list-style-type: none"> Erythrocyte count (RBC) Hematocrit Hemoglobin 	<ul style="list-style-type: none"> Leukocyte count (WBC) Platelet count WBC differential, automated
		<ul style="list-style-type: none"> MCV

Item PT02200

Three shipments per year
 Five samples per shipment

NOTE: See Instrument Table on page 22.

Hematology - Limited (AT)

Whole blood samples for automated instruments with 2-3 part differential or no differential.

	CLIA REGULATED	UNREGULATED
ANALYTES	<ul style="list-style-type: none"> Erythrocyte count (RBC) Hematocrit Hemoglobin 	<ul style="list-style-type: none"> Leukocyte count (WBC) Platelet count WBC differential, automated
		<ul style="list-style-type: none"> MCV

1-6 Analytes Item PT02180
 7+ Analytes Item PT02190

Three shipments per year
 Five samples per shipment

NOTE: See Instrument Table on page 22.

HEMATOLOGY

Hematology - Cell Identification (XI)

Item PT02220

Seven images (paper and online versions).

Three shipments per year
Five regulated and two educational challenges per shipment

	CLIA REGULATED	UNREGULATED
ANALYTES	<ul style="list-style-type: none"> • Cell identification 	<ul style="list-style-type: none"> • Cell identification, educational

NOTE: For Laboratories reporting both automated differential and cell identification, only the automated differential score will be transmitted to accreditation agencies.

Reticulocytes - Manual and Some Automated (RT)

Item PT02420

Whole blood samples for manual methods and some automated instruments.

Two shipments per year
Three samples per shipment

	CLIA REGULATED	UNREGULATED
ANALYTES		<ul style="list-style-type: none"> • Reticulocyte count, percent

NOTE: See Instrument Table on page 22.

Reticulocytes - Beckman Coulter (RTB)

Item PT02442

Whole blood samples for Beckman Coulter instruments.

Two shipments per year
Three samples per shipment

	CLIA REGULATED	UNREGULATED
ANALYTES		<ul style="list-style-type: none"> • IRF • Reticulocyte count, absolute • Reticulocyte count, percent

NOTE: See Instrument Table on page 22.

Reticulocytes - Sysmex (RTS)

Item PT02432

Whole blood samples for Sysmex instruments.

Two shipments per year
Three samples per shipment

	CLIA REGULATED	UNREGULATED
ANALYTES		<ul style="list-style-type: none"> • IRF • Reticulocyte count, absolute • Reticulocyte count, percent • Re-He

NOTE: See Instrument Table on page 22.

HEMATOLOGY

Erythrocyte Sedimentation Rate (ESR) Instruments

ESR samples are instrument specific. Please use the table below to choose the correct sample/instrument combination.

INSTRUMENTS	SR	SRI	SRA
		X	
			X
	X		

Sedimentation Rate (SR)

Item PT02450

Whole blood samples intended for manual and automated erythrocyte sedimentation rate methods.

Two shipments per year
Three samples per shipment

	CLIA REGULATED	UNREGULATED
ANALYTES		• Erythrocyte sedimentation rate

NOTE: See Instrument Table above.

Sedimentation Rate - iSED and Alifax (SRI)

Item PT02520

Whole blood samples intended for the iSED ESR systems and Alifax.

Two shipments per year
Three samples per shipment

	CLIA REGULATED	UNREGULATED
ANALYTES		• Erythrocyte sedimentation rate

NOTE: See Instrument Table above.

Sedimentation Rate - Polymedco Sedimat 15 and ESR Stat Plus (SRA)

Item PT02470

Whole blood samples intended for Polymedco Sedimat 15 and ESR Stat Plus instruments.

Two shipments per year
Three samples per shipment

	CLIA REGULATED	UNREGULATED
ANALYTES		• Erythrocyte sedimentation rate

NOTE: See Instrument Table above.

HEMATOLOGY

Fetal Red Cell Detection (HBF)

Item PT04350

1mL whole blood samples intended for fetal maternal hemorrhage detection methods. Compatible with fetal rosette screen (qualitative) and Kleihauer-Betke stain (quantitative).

Two shipments per year
Three samples per shipment

	CLIA REGULATED	UNREGULATED
ANALYTES		<ul style="list-style-type: none">• Fetal Screen (qualitative)• Hemoglobin F (quantitative)

Hematocrit - Waived Methods (HW)

Item PT02150

Liquid whole blood samples intended for use with waived hematocrit methods.

Two shipments per year
Three samples per shipment

	CLIA REGULATED	UNREGULATED
ANALYTES		<ul style="list-style-type: none">• Hematocrit

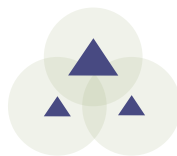
Sickle Cell Screen (SK)

Item PT02490

Stabilized RBC samples compatible with solubility and electrophoresis methods.

Two shipments per year
Three samples per shipment

	CLIA REGULATED	UNREGULATED
ANALYTES		<ul style="list-style-type: none">• Sickle cell screen



IMMUNOHEMATOLOGY



Blood Bank (Immunohematology) - Comprehensive (AB)

Five bar-coded 4mL whole blood samples and one 2mL whole blood donor sample for compatibility testing. Intended for use with manual and automated methods.

Item PT04120

Three shipments per year
Five samples per shipment

NOTE: Samples are NOT compatible with Olympus PK7200/7300 instruments.

	CLIA REGULATED	UNREGULATED
ANALYTES	<ul style="list-style-type: none"> • ABO group • Rh (D) typing • Unexpected antibody detection 	<ul style="list-style-type: none"> • Compatibility testing • Antibody identification

Blood Bank (Immunohematology) - Limited (AB)

Five bar-coded 4mL whole blood samples. Intended for use with manual and automated methods.

Item PT04140

Three shipments per year
Five samples per shipment

NOTE: Samples are NOT compatible with Olympus PK7200/7300 instruments.

	CLIA REGULATED	UNREGULATED
ANALYTES	<ul style="list-style-type: none"> • ABO group • Rh (D) typing 	

Blood Bank Direct Antiglobulin Test (DAT)

Three bar-coded 2mL whole blood samples for Direct Antiglobulin Testing. Intended for use with manual and automated methods.

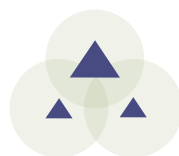
Item PT04145

Two shipments per year
Three samples per shipment

NOTE: Samples are NOT compatible with Olympus PK7200/7300 instruments.

	CLIA REGULATED	UNREGULATED
ANALYTES		<ul style="list-style-type: none"> • DAT

BLOOD BANK



IMMUNOLOGY

ANA Immunoserology (XN)

0.6mL liquid samples compatible with EIA, IFA, and multiplex methods. Educational titer and pattern reporting available. Samples are NOT compatible with latex agglutination methods.

Item PT04000

Three shipments per year
Five samples per shipment

	CLIA REGULATED	UNREGULATED
ANALYTES	• Antinuclear antibody, qualitative	

ASO Immunoserology (XS)

1mL liquid samples.

Item PT04070

Three shipments per year
Five samples per shipment

	CLIA REGULATED	UNREGULATED
ANALYTES	• Antistreptolysin O (ASO), qualitative	• Antistreptolysin O (ASO), quantitative

CRP Immunoserology (XP)

1mL liquid samples intended for methods screening for non-specific inflammatory disease.

Item PT04160

Two shipments per year
Three samples per shipment

	CLIA REGULATED	UNREGULATED
ANALYTES		• C-reactive protein, qualitative • C-reactive protein, quantitative

NOTE: For high-sensitivity CRP methods, see Cardiac products on page 10.

Helicobacter pylori Serology (HL)

0.5mL liquid samples.

Item PT04010

Two shipments per year
Three samples per shipment

	CLIA REGULATED	UNREGULATED
ANALYTES		• Helicobacter pylori (total antibody)

NOTE: For stool Helicobacter pylori, see HPSA product on page 39. For Urease, see Rapid Urease product on page 39.

IMMUNOLOGY

Hepatitis (YB)

Item PT04190

1.5mL liquid samples. Compatible with traditional hepatitis methods and OraQuick HCV Rapid Antibody Test.

Three shipments per year
Five samples per shipment

	CLIA REGULATED	UNREGULATED
ANALYTES	<ul style="list-style-type: none"> • Anti-HBc, IgM • Anti-HBc (total antibody) • HBsAg 	<ul style="list-style-type: none"> • Anti-HAV, IgM • Anti-HBs • Anti-HCV

HIV Ag/Ab Combo (HVC)

Item PT04064

1mL liquid samples. Compatible with Alere Determine HIV Combo rapid kit and automated combo assays used to detect HIV-1/2 antibody and HIV-1 p24 Antigen.

Three shipments per year
Five samples per shipment

	CLIA REGULATED	UNREGULATED
ANALYTES	<ul style="list-style-type: none"> • Anti-HIV • Anti-HIV/p24 Antigen (not differentiated) 	<ul style="list-style-type: none"> • p24 Antigen

Anti-HIV (HV)

Item PT04020

1mL liquid samples. Compatible with rapid and traditional testing methods used to test for Anti-HIV-1 or Anti-HIV-1/2 (antibody).

Three shipments per year
Five samples per shipment

	CLIA REGULATED	UNREGULATED
ANALYTES	<ul style="list-style-type: none"> • Anti-HIV 	

NOTE: For methods that also detect p24 Antigen, see HVC product above.

Anti-HIV - Waived Methods (HVW)

Item PT04040

1mL liquid samples. Compatible with waived rapid kits used to test for Anti-HIV-1 or Anti-HIV-1/2 (antibody).

Two shipments per year
Three samples per shipment

	CLIA REGULATED	UNREGULATED
ANALYTES		<ul style="list-style-type: none"> • Anti-HIV

NOTE: For methods that also detect p24 Antigen, see HVC product above.

IMMUNOLOGY

Immunoproteins (IMP)

1mL liquid samples.

Item PT04290

Three shipments per year
Five samples per shipment

	CLIA REGULATED	UNREGULATED
ANALYTES	<ul style="list-style-type: none"> • Alpha-1 Antitrypsin (AAT) • Complement C3 • Complement C4 	<ul style="list-style-type: none"> • IgA • IgE • IgG • IgM

Infectious Disease Serology (MMV)

0.5mL lyophilized serum samples.

Item PT04320

Two shipments per year
Three samples per shipment

	CLIA REGULATED	UNREGULATED
ANALYTES		<ul style="list-style-type: none"> • Measles IgG, qualitative • Measles IgM, qualitative • Mumps IgG, qualitative • Mumps IgM, qualitative • Varicella Zoster IgG, qualitative • Varicella Zoster IgM, qualitative

Lyme Disease Serology (LY)

0.5mL liquid samples.

Item PT04200

Two shipments per year
Three samples per shipment

	CLIA REGULATED	UNREGULATED
ANALYTES		<ul style="list-style-type: none"> • Lyme Disease Antibody, IgG • Lyme Disease Antibody, IgM • Lyme Disease Antibody, Total

Mono Immunoserology (ZM)

0.65mL liquid samples.

Item PT04210

Three shipments per year
Five samples per shipment

	CLIA REGULATED	UNREGULATED
ANALYTES	<ul style="list-style-type: none"> • Infectious mononucleosis 	

IMMUNOLOGY

Mono Immunoserology - Waived Methods (MW)

Item PT04220

0.65mL liquid samples.

	CLIA REGULATED	UNREGULATED
ANALYTES		<ul style="list-style-type: none">• Infectious mononucleosis

Two shipments per year
Three samples per shipment

Mycoplasma Antibody (MP)

Item PT04300

0.5mL liquid samples. Compatible with kits that detect antibody to Mycoplasma pneumoniae.

	CLIA REGULATED	UNREGULATED
ANALYTES		<ul style="list-style-type: none">• Mycoplasma antibody

Two shipments per year
Three samples per shipment

Rheumatoid Factor Immunoserology (ZR)

Item PT04250

1mL liquid samples.

	CLIA REGULATED	UNREGULATED
ANALYTES	<ul style="list-style-type: none">• Rheumatoid factor, qualitative	<ul style="list-style-type: none">• Rheumatoid factor, quantitative• Rheumatoid factor, titer

Three shipments per year
Five samples per shipment

Rubella Immunoserology (XU)

Item PT04260

1mL liquid samples.

	CLIA REGULATED	UNREGULATED
ANALYTES	<ul style="list-style-type: none">• Rubella, qualitative (IgG)	<ul style="list-style-type: none">• Rubella, quantitative (IgG)

Three shipments per year
Five samples per shipment

IMMUNOLOGY

Rubella IgM Immunoserology (XM)

0.5mL lyophilized serum samples. For Quality Assurance only; does not meet CMS Rubella requirements.

Item PT04330

Two shipments per year
Three samples per shipment

	CLIA REGULATED	UNREGULATED
ANALYTES		• Rubella, qualitative (IgM)

SARS-CoV-2 Serology (SCA)

1.0mL samples intended for antibody detection.

Item PT04340

Two shipments per year
Three samples per shipment

	CLIA REGULATED	UNREGULATED
ANALYTES		• SARS-CoV-2

NEW!

Syphilis Serology (SS)

1mL liquid samples intended for the quantitative and qualitative evaluation of antibody to *Treponema pallidum*. Intended for methods that evaluate serum specimens (RPR, VDRL, FTA, MHA-TP, TP-PA, EIA/CIA, multiplex flow immunoassay, and rapid kits).

Item PT04270

Three shipments per year
Five samples per shipment

	CLIA REGULATED	UNREGULATED
ANALYTES	• Syphilis Nontreponemal, qualitative • Syphilis Nontreponemal, quantitative • Syphilis Treponemal, qualitative	

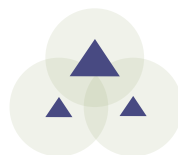
Thyroid Antibodies (THY)

0.5mL liquid samples.

Item PT04310

Two shipments per year
Three samples per shipment

	CLIA REGULATED	UNREGULATED
ANALYTES		• Thyroglobulin Antibody (Anti-TG), quantitative • Thyroid Peroxidase/Microsomal Antibody (Anti-TPO), quantitative



MICROBIOLOGY

▲ Bacteriology

Microbiology CLIA requirements:

CLIA regulations require five proficiency testing challenges per event for each Microbiology sub-specialty. The sub-specialties are Bacteriology, Mycobacteriology, Mycology, Parasitology and Virology. All non-waived tests in a sub-specialty can be combined to meet the five challenges per event requirement.

Microbiology challenges tested with waived methods cannot be included with non-waived methods to meet the five challenges per event requirement.

Bacterial Antigens - for meningitis (BA)

Item PT05000

Samples for rapid antigen detection. Compatible with BD Directigen, Binax NOW, and Wellcogen.

Three shipments per year
Five samples per shipment

	CLIA REGULATED	UNREGULATED
PROCEDURES ANTIGEN DETECTION	<ul style="list-style-type: none">• Group B Streptococci• Haemophilus influenzae type b• Neisseria meningitidis group A, C, Y, W135	<ul style="list-style-type: none">• Neisseria meningitidis group B or E. coli K1• Streptococcus pneumoniae

Bacterial Vaginosis Detection (BV)

Item PT05005

Samples for the detection of bacterial vaginosis intended for use with the OSOM BV BLUE Test kit.

Two shipments per year
Three samples per shipment

	CLIA REGULATED	UNREGULATED
PROCEDURES		<ul style="list-style-type: none">• Bacterial vaginosis detection

MICROBIOLOGY

▲ Bacteriology

Bacteriology - Comprehensive (MC)

Procedures listed are offered a minimum of two times per year. Culture samples are also compatible with molecular methods.

Item PT05030

Three shipments per year
Nine samples per shipment

NOTE: Group A Strep antigen samples are not compatible with Alere i Strep A. See WSM product on page 38.

Some organisms may not be included to clients outside of the United States.

	CLIA REGULATED	UNREGULATED
PROCEDURES	<ul style="list-style-type: none"> Anaerobic bacteria culture Antimicrobial susceptibility Blood culture C. difficile antigen and/or molecular Enteric pathogen identification Gram stain Group A Strep antigen detection Group A Strep culture 	<ul style="list-style-type: none"> Group B Strep culture Methicillin-resistant Staph aureus Miscellaneous culture N. gonorrhoeae culture Urine culture Vancomycin-resistant Enterococcus
		<ul style="list-style-type: none"> C. difficile toxin

Bacteriology - Limited (MC)

Culture samples are also compatible with molecular methods.

Item PT05040

Three shipments per year
Five samples per shipment

NOTE: Group A Strep antigen samples are not compatible with Alere i Strep A. See WSM product on page 38.

	CLIA REGULATED	UNREGULATED
PROCEDURES (NUMBER/YEAR)	<ul style="list-style-type: none"> Anaerobic bacteria culture (1) Antimicrobial susceptibility (3) Blood culture (2) Gram stain (3) Group A Strep antigen detection (3) 	<ul style="list-style-type: none"> Group A Strep culture (3) N. gonorrhoeae culture (3) Urine culture (3) Wound culture (1)

MICRO-BACTERIOLOGY

MICROBIOLOGY

▲ Bacteriology

Blood Culture (CB)

Item PT05360

Samples for blood culture and/or multiplex methods, including identification of bacteria and fungi.

	CLIA REGULATED	UNREGULATED
PROCEDURES	<ul style="list-style-type: none">• Blood culture• Gram stain	

Three shipments per year
Five samples per shipment

Bordetella by Molecular Methods (BOR)

Item PT05055

Intended for detection of *B. pertussis*, *B. parapertussis*, and/or *B. holmesii* by molecular methods.

	CLIA REGULATED	UNREGULATED
PROCEDURES		<ul style="list-style-type: none">• Bordetella species detection

Two shipments per year
Five samples per shipment

Carbapenem Resistance Detection (CR)

Item PT05330

Samples for detection of Carbapenem-resistant organisms (CRO). Intended for molecular methods, including the Cepheid GeneXpert Carba-R.

	CLIA REGULATED	UNREGULATED
PROCEDURES		<ul style="list-style-type: none">• IMP detection• KPC detection• NDM-1 detection• OXA-48 detection• VIM detection

Two shipments per year
Five samples per shipment

MICROBIOLOGY

▲ Bacteriology

Clostridium difficile (CD)

Item PT05060

Compatible with rapid antigen or toxin detection methods as well as molecular methods.

Three shipments per year
Five samples per shipment

	CLIA REGULATED	UNREGULATED
PROCEDURES	<ul style="list-style-type: none">• C. difficile antigen detection• C. difficile molecular detection	<ul style="list-style-type: none">• C. difficile toxin detection

CT/GC Detection (AC)

Item PT05070

Liquid samples containing human DNA. Intended for molecular methods.

Three shipments per year
Five samples per shipment

	CLIA REGULATED	UNREGULATED
PROCEDURES	<ul style="list-style-type: none">• Chlamydia trachomatis detection• Neisseria gonorrhoeae detection	

MICROBIOLOGY

▲ Bacteriology

Gram Stain (GS)

Methanol-fixed slides for Gram staining.

Item PT05090

Three shipments per year
Five samples per shipment

	CLIA REGULATED	UNREGULATED
PROCEDURES	<ul style="list-style-type: none">• Gram reaction	<ul style="list-style-type: none">• Organism morphology



MICROBIOLOGY

▲ Bacteriology

Group A Strep Antigen (Rapid Strep) (SA)

Samples for Group A Streptococci antigen detection (rapid strep).

	CLIA REGULATED	UNREGULATED
PROCEDURES	• Group A Strep antigen detection	

Item PT05110

Three shipments per year
Five samples per shipment

NOTE: Group A strep antigen samples are not compatible with Alere i-Strep A. See WSM product below.

Group A Strep Antigen (Rapid Strep) - Waived Methods (WS)

Intended for waived methods only.

	CLIA REGULATED	UNREGULATED
PROCEDURES		• Group A Strep antigen detection

Item PT05130

Two shipments per year
Three samples per shipment

NOTE: Customers using molecular methods, see WSM product below

Group A Strep Molecular - Waived Methods (WSM)

Intended for waived molecular methods only.

	CLIA REGULATED	UNREGULATED
PROCEDURES		• Group A Strep molecular detection

Item PT05410

Two shipments per year
Three samples per shipment

Group A Strep (ST)

Samples for detection of Group A Streptococci. Compatible with culture and molecular methods.

	CLIA REGULATED	UNREGULATED
PROCEDURES	• Group A Strep	

Item PT05170

Three shipments per year
Five samples per shipment

MICROBIOLOGY

▲ Bacteriology

Group B Strep / Neisseria gonorrhoeae (SB)

Item PT05180

Samples for detection of Group B Streptococci by culture or molecular methods and/or N. gonorrhoeae by culture.

Three shipments per year
Five samples per shipment

	CLIA REGULATED	UNREGULATED
PROCEDURES	<ul style="list-style-type: none">Group B StrepNeisseria gonorrhoeae	

Helicobacter pylori Antigen, Stool (HPSA)

Item PT05400

0.5mL liquid samples intended for the qualitative evaluation of Helicobacter pylori antigen in stool specimens.

Two shipments per year
Two samples per shipment

	CLIA REGULATED	UNREGULATED
PROCEDURES		<ul style="list-style-type: none">Helicobacter pylori antigen detection

NOTE: For serum Helicobacter pylori, see HL product on page 28.

Helicobacter pylori - Rapid Urease (RUR)

Item PT05500

Simulated gastric biopsy samples on paper disks. Intended for use with CLOtest, PyloriTek, or similar methods.

Two shipments per year
Three samples per shipment

	CLIA REGULATED	UNREGULATED
ANALYTES		<ul style="list-style-type: none">Urease

NOTE: For serum Helicobacter pylori, see HL product on page 28.

Legionella Antigen (LGA)

2 Sample Add-on Item PT05440

0.5mL liquid samples for Legionella Antigen detection methods in urine.

Three shipments per year
Two samples per shipment

	CLIA REGULATED	UNREGULATED
ANALYTES	<ul style="list-style-type: none">Legionella Antigen	

NOTE: Item PT05440 can only be ordered when added to another Bacteriology product.

MICROBIOLOGY

▲ Bacteriology

Meningitis Multiplex (MEP)

Samples intended for meningitis multiplex assays.

Item PT05450

Three shipments per year
Five samples per shipment

Some organisms may not be included to clients outside of the United States.

	CLIA REGULATED	UNREGULATED
ANALYTES	<ul style="list-style-type: none"> • Cytomegalovirus (CMV) • Enterovirus (EV) • Escherichia coli K1 • Haemophilus influenzae • Herpes simplex virus 1 (HSV-1) • Herpes simplex virus 2 (HSV-2) • Human herpesvirus 6 (HHV-6) 	<ul style="list-style-type: none"> • Human parechovirus (HPeV) • Listeria monocytogenes • Neisseria meningitidis • Streptococcus agalactiae • Streptococcus pneumoniae • Varicella zoster virus (VZV)
		<ul style="list-style-type: none"> • Cryptococcus neoformans/gattii

MRSA / VRE (MR)

Compatible with culture and molecular methods. NOT intended for methods that screen for specific VRE genes (vanA, vanB, etc.).

Item PT05200

Three shipments per year
Five samples per shipment

	CLIA REGULATED	UNREGULATED
PROCEDURES	<ul style="list-style-type: none"> • Staphylococcus aureus • Methicillin-resistant S. aureus • Vancomycin-resistant Enterococcus 	

Mycoplasma genitalium Molecular (MG)

Samples for molecular detection of Mycoplasma genitalium.

Item PT05460

Two shipments per year
Three samples per shipment

	CLIA REGULATED	UNREGULATED
PROCEDURES		<ul style="list-style-type: none"> • M. genitalium detection

MICROBIOLOGY

▲ Bacteriology

Shiga Toxin (SHG)

Item PT05240

Samples for Shiga Toxin 1 and/or 2 and undifferentiated detection methods. Compatible with rapid antigen detection and molecular methods.

Two shipments per year
Three samples per shipment

	CLIA REGULATED	UNREGULATED
PROCEDURES		<ul style="list-style-type: none"> • Shiga toxin 1 detection • Shiga toxin 2 detection • Shiga toxin undifferentiated

Throat/Urine Bacteriology (TU)

Item PT05250

Samples for urine culture, Group A Streptococci culture, and Group A Streptococci antigen detection (rapid strep).

Three shipments per year
Seven samples per shipment

	CLIA REGULATED	UNREGULATED
PROCEDURES (NUMBER/ SHIPMENT)	<ul style="list-style-type: none"> • Antimicrobial susceptibility (1) • Gram stain (1) • Group A Strep antigen detection (2) 	<ul style="list-style-type: none"> • Group A Strep culture (2) • Urine culture (3)

NOTE: Group A strep antigen samples are not compatible with Alere i Strep A. See WSM product on page 38.

Throat/Urine Bacteriology - Limited (TU)

Item PT05260

Samples for urine culture and Group A Streptococci culture.

Three shipments per year
Five samples per shipment

	CLIA REGULATED	UNREGULATED
PROCEDURES (NUMBER/ SHIPMENT)	<ul style="list-style-type: none"> • Antimicrobial susceptibility (1) • Gram stain (1) 	<ul style="list-style-type: none"> • Group A Strep culture (2) • Urine culture (3)

Urine Culture (UC)

Item PT05270

Samples for urine culture.

Three shipments per year
Five samples per shipment

	CLIA REGULATED	UNREGULATED
PROCEDURES (NUMBER/ SHIPMENT)	<ul style="list-style-type: none"> • Antimicrobial susceptibility (1) 	<ul style="list-style-type: none"> • Gram stain (1) • Urine culture (5)

MICROBIOLOGY

▲ Bacteriology

Vaginal Pathogens (VP)

Intended for use with the BD Affirm VPIII.

	CLIA REGULATED	UNREGULATED
PROCEDURES	<ul style="list-style-type: none">• Gardnerella detection	<ul style="list-style-type: none">• Candida detection• Trichomonas detection

Item PT05280

Three shipments per year
Five samples per shipment

VP Molecular (VPM)

Samples for detection of vaginal pathogens via molecular methods. Compatible with BD MAX and Aptima Vaginal Panels.

	CLIA REGULATED	UNREGULATED
PROCEDURES		<ul style="list-style-type: none">• Bacterial vaginosis detection• Candida detection• Trichomonas detection

Item PT05470

Three shipments per year
Five samples per shipment



MICROBIOLOGY

▲ Mycobacteriology

Acid-Fast Stain (MA)

Item PT06000

Intended for reporting the presence or absence of acid-fast bacilli.

Two shipments per year
Five samples per shipment

	CLIA REGULATED	UNREGULATED
PROCEDURES	<ul style="list-style-type: none"> Acid-fast stain 	

Mycobacteriology Culture (MB)

Item PT06060

Samples for Mycobacterium species culture.

Two shipments per year
Five samples per shipment

	CLIA REGULATED	UNREGULATED
PROCEDURES	<ul style="list-style-type: none"> Mycobacteria culture 	

M. tuberculosis by Molecular Methods (TB5)

Item PT06050

Intended for Mycobacterium tuberculosis detection by molecular methods. Includes detection of Rifampin resistance.

Two shipments per year
Five samples per shipment

	CLIA REGULATED	UNREGULATED
PROCEDURES		<ul style="list-style-type: none"> M. tuberculosis detection Rifampin resistance screen

MICROBIOLOGY

▲ Mycology

KOH Slides (KOH)

Slides for KOH/calcofluor white preparations.

Item PT06230

Two shipments per year
Three samples per shipment

	CLIA REGULATED	UNREGULATED
PROCEDURES		• KOH Preparation

Mycology - Comprehensive (MY)

Samples for comprehensive fungal culture including yeast, dermatophytes, and aerobic actinomycete identification.

Item PT06070

Three shipments per year
Five samples per shipment

	CLIA REGULATED	UNREGULATED
PROCEDURES	• Aerobic Actinomycetes identification • Mold, yeast, and yeast-like organism identification	

Mycology - Cryptococcal Antigen (MYC)

Simulated CSF samples for cryptococcal antigen detection.

Item PT06080

Three shipments per year
Five samples per shipment

	CLIA REGULATED	UNREGULATED
PROCEDURES		• Cryptococcal antigen detection

Mycology - Dermatophyte (DM)

Two reporting options: 1) Qualitative - Designed for laboratories or dermatology offices reporting the presence or absence of dermatophytes. Compatible with Dermatophyte Test Medium [DTM] or non-specialized and non-differential mycology media. 2) Identification - Designed for laboratories or dermatology offices identifying dermatophytes to a genus or species level.

Item PT06090

Three shipments per year
Five samples per shipment

	CLIA REGULATED	UNREGULATED
PROCEDURES	• Dermatophyte identification to genus or species level (Identification)	• Dermatophyte screen by culture (Qualitative)

MICROBIOLOGY

▲ Mycology

India Ink (IND)

Liquid samples to detect presence or absence of encapsulated yeast using India Ink methods.

Item PT06105

Two shipments per year
Three samples per shipment

	CLIA REGULATED	UNREGULATED
PROCEDURES		· India Ink

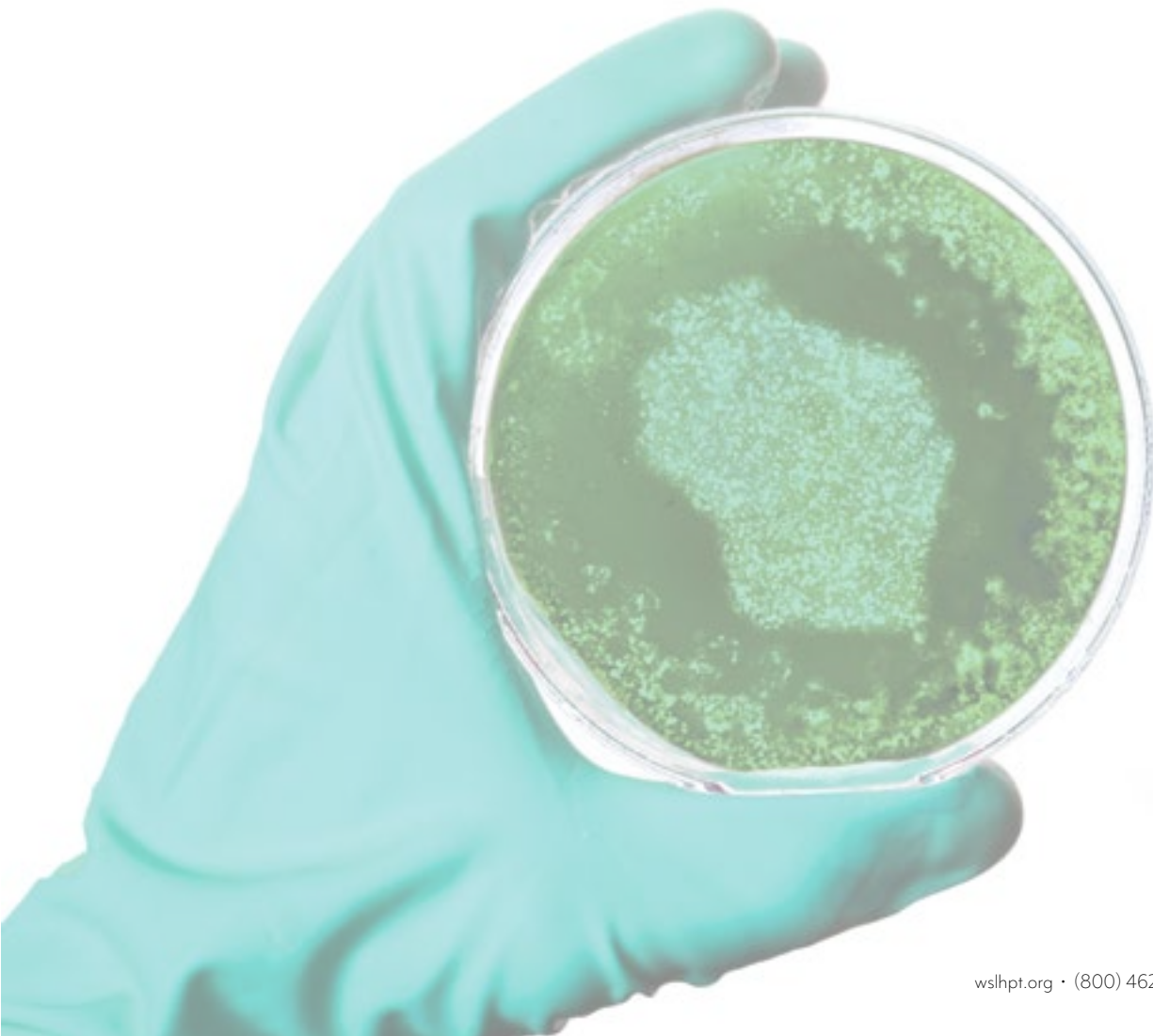
Mycology - Yeast (YE)

Samples for yeast culture. Not intended for wet mount preparations.

Item PT06100

Three shipments per year
Five samples per shipment

	CLIA REGULATED	UNREGULATED
PROCEDURES	· Yeast and yeast-like organism identification	



MICROBIOLOGY

▲ Parasitology

Blood Parasites (PAB)

Samples include giemsa-stained smears and/or photomicrographs of thick and thin blood smears.

Item PT06020

Three shipments per year
Five samples per shipment

	CLIA REGULATED	UNREGULATED
PROCEDURES	<ul style="list-style-type: none">• Anaplasma species• Babesia species• Ehrlichia species• Filarial worms	<ul style="list-style-type: none">• Plasmodium species• Trypanosoma species

Giardia/Cryptosporidium Antigen Detection (GI)

Formalin-preserved samples for Giardia/Cryptosporidium detection. Samples are not compatible with Triage devices. Intended for laboratories performing Giardia/Cryptosporidium screening on stool samples.

Item PT06030

Three shipments per year
Five samples per shipment

	CLIA REGULATED	UNREGULATED
PROCEDURES	<ul style="list-style-type: none">• Giardia/Cryptosporidium antigen detection	

Parasitology - Comprehensive (PA)

Sample types include formalin-preserved stool, zinc-PVA stool smears, and blood parasite smears/photomicrographs. Samples are not compatible with Triage devices. Intended for Level 2 laboratories (as defined by CLIA '88) performing full O&P identification of stool specimens.

Item PT06110

Three shipments per year
Six samples per shipment

	CLIA REGULATED	UNREGULATED
PROCEDURES	<ul style="list-style-type: none">• Blood parasite identification• Giardia/Cryptosporidium antigen detection• Modified acid-fast stain• Permanent stain• Stool wet mount	

MICROBIOLOGY

▲ Parasitology

Trichomonas Molecular (TVM)

Liquid samples for molecular detection of Trichomonas.

Item PT05320

Two shipments per year
Three samples per shipment

	CLIA REGULATED	UNREGULATED
PROCEDURES		• Trichomonas detection

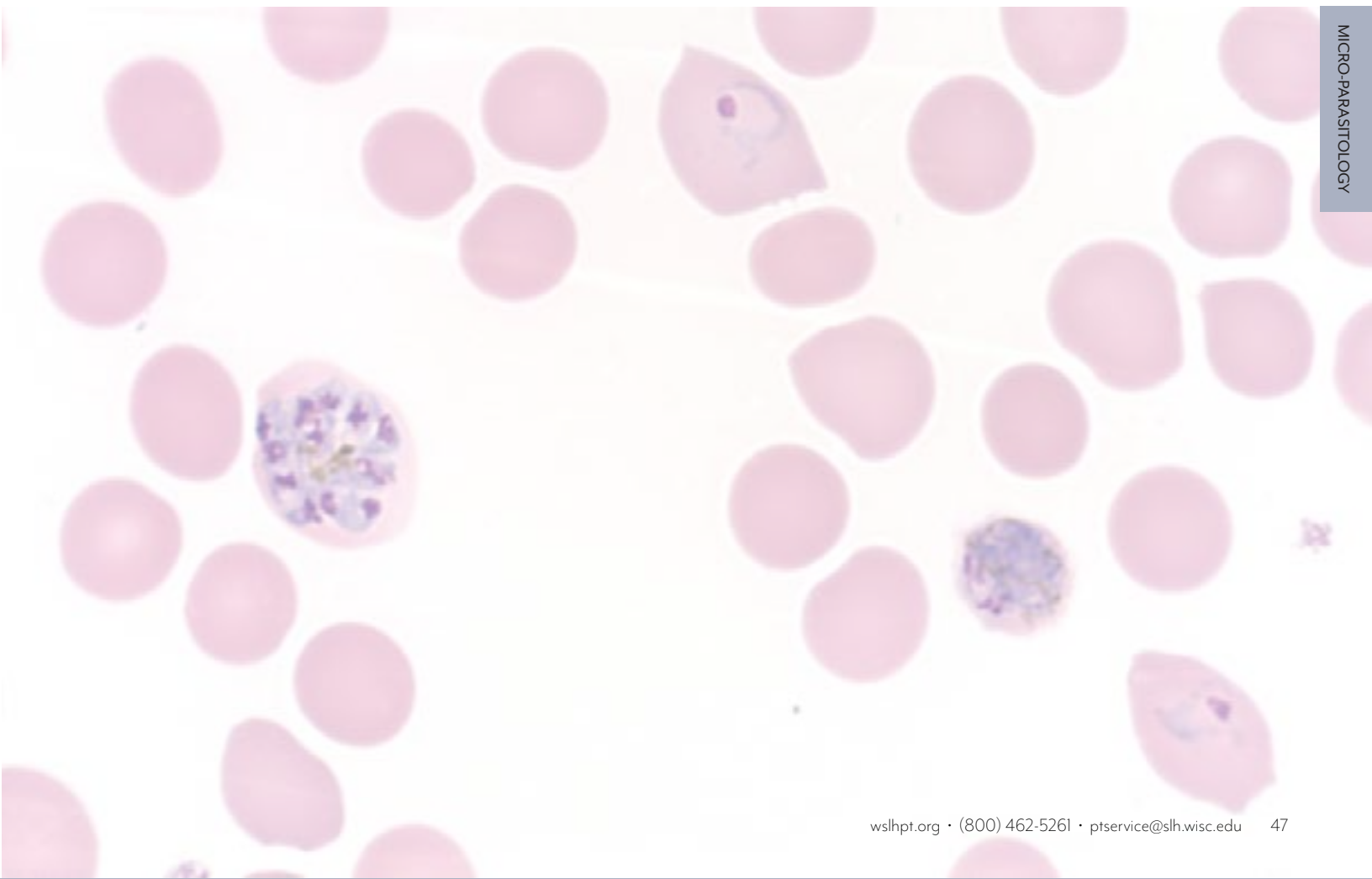
Trichomonas OSOM (TV)

Samples for detection of Trichomonas intended for use with OSOM Trichomonas Rapid Test.

Item PT05310

Two shipments per year
Three samples per shipment

	CLIA REGULATED	UNREGULATED
PROCEDURES		• Trichomonas detection



MICRO-PARASITOLOGY

MICROBIOLOGY

▲ Virology

HPV Molecular (HPV)

1mL liquid samples intended for molecular detection of Human Papillomavirus.

Item PT06250

Three shipments per year
Five samples per shipment

	CLIA REGULATED	UNREGULATED
ANALYTES	• HPV	• HPV Genotyping

HSV Molecular (HSV)

Liquid samples intended for molecular detection of Herpes Simplex Virus (HSV) 1 & 2.

Item PT06220

Three shipments per year
Five samples per shipment

	CLIA REGULATED	UNREGULATED
ANALYTES	• HSV 1 • HSV 2	

Respiratory Multiplex (RP)

Samples intended for molecular respiratory multiplex assays.

Item PT06240

Three shipments per year
Five samples per shipment

	CLIA REGULATED	UNREGULATED
ANALYTES	• Adenovirus • Bordetella • Chlamydomphila pneumoniae • Coronavirus • Human metapneumovirus • Influenza	• Mycoplasma pneumoniae • Parainfluenza • Respiratory syncytial virus (RSV) • Rhinovirus/ Enterovirus

MICRO-VIROLOGY

MICROBIOLOGY

▲ Virology

SARS-CoV-2 Antigen (CVW)

Swabs intended for antigen tests targeting the SARS-CoV-2 nucleoprotein.

Item PT06290
QE Product Item PT06295

NEW!

	CLIA REGULATED	UNREGULATED
ANALYTES		• SARS-CoV-2

SARS-CoV-2 Molecular - 5 Samples (CM)

Swabs with 1.5mL elution liquid intended for molecular detection of SARS-CoV-2. Whole genome product that contains 100% genetic sequences of the virus.

Item PT06270
QE Product Item PT06275

NEW!

	CLIA REGULATED	UNREGULATED
ANALYTES		• SARS-CoV-2

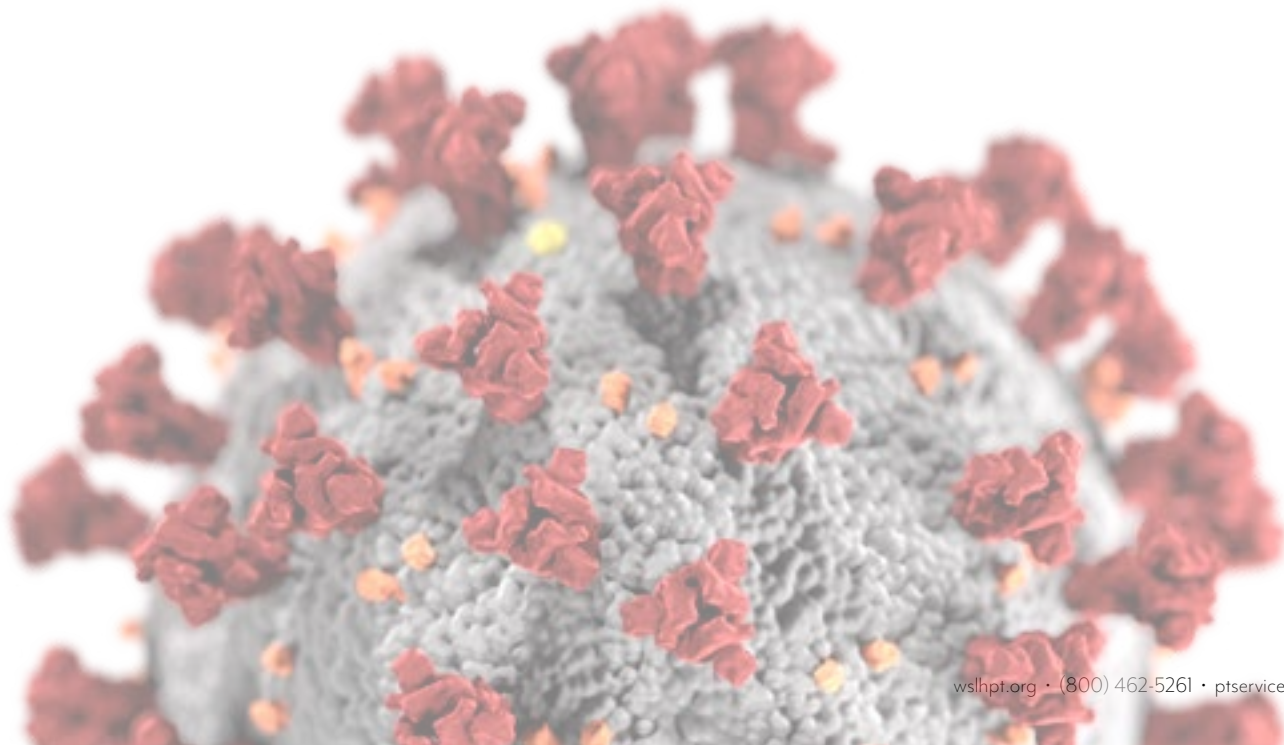
SARS-CoV-2 Molecular - 3 Samples (CMW)

Swabs with 1.5mL elution liquid intended for molecular detection of SARS-CoV-2. Whole genome product that contains 100% genetic sequences of the virus.

Item PT06280
QE Product Item PT06285

NEW!

	CLIA REGULATED	UNREGULATED
ANALYTES		• SARS-CoV-2



MICROBIOLOGY

▲ Virology

Viral Antigens - Limited (VA)

Liquid samples for rapid antigen test kits or molecular methods.

	CLIA REGULATED	UNREGULATED
ANALYTES	<ul style="list-style-type: none">• Adenovirus• Influenza A	<ul style="list-style-type: none">• Influenza B• RSV

Item PT06150

Three shipments per year
Five samples per shipment

Viral Antigens with Rotavirus (VA)

Liquid samples for rapid antigen test kits or molecular methods.

	CLIA REGULATED	UNREGULATED
ANALYTES	<ul style="list-style-type: none">• Adenovirus• Influenza A• Influenza B	<ul style="list-style-type: none">• RSV• Rotavirus

Item PT06200

Three shipments per year
Five samples per shipment

NOTE: Customers not testing Rotavirus,
choose Limited product above.

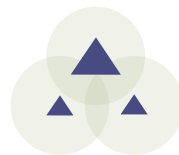
Viral Antigens - Waived Methods (VCW)

Liquid samples intended for waived rapid antigen test kits or molecular methods.

	CLIA REGULATED	UNREGULATED
ANALYTES		<ul style="list-style-type: none">• Adenovirus• Influenza A• Influenza B• RSV

Item PT06170

Two shipments per year
Three samples per shipment



URINALYSIS / MICROSCOPY / MISC

Amniotic Fluid Detection (AE)

Item PT03000

0.4mL liquid samples for detecting the presence/absence of fluid from ruptured fetal membranes. Intended for use with the Actim PROM, AmniSure ROM, Clinical Innovations ROM Plus, and PartoSure.

Two shipments per year
Two samples per shipment

	CLIA REGULATED	UNREGULATED
ANALYTES		<ul style="list-style-type: none"> • Rupture of fetal membranes

Body Fluid Cell Count (BFA & BFM)

Automated cell count (BFA) Item PT03030

Manual cell count (BFM) Item PT03040

Clear, protein-based, liquid samples intended for labs performing body fluid cell counts by automated or manual methods. These samples are NOT compatible with the IRIS IQ200.

Two shipments per year
Three samples per shipment

	CLIA REGULATED	UNREGULATED
ANALYTES		<ul style="list-style-type: none"> • RBC • WBC

Body Fluid Microscopy (BF)

Item PT03050

Three images (paper and online versions) that include crystal(s) and/or cell identification(s) found in miscellaneous fluids (e.g., synovial, spinal, pleural). A synovial fluid crystal identification will be provided in one of the three images per event.

Two shipments per year
Three samples per shipment

	CLIA REGULATED	UNREGULATED
ANALYTES		<ul style="list-style-type: none"> • Cell identification • Crystal identification

Fecal Lactoferrin (LF)

Item PT03060

0.5mL liquid samples compatible with the LEUKO-TEST, LEUKO EZ VUE, IBD-Chek, and IBD EZ VUE methods.

Two shipments per year
Three samples per shipment

	CLIA REGULATED	UNREGULATED
ANALYTES		<ul style="list-style-type: none"> • Lactoferrin

URINALYSIS/MICROSCOPY/MISC

Fecal Occult Blood (OC)

Item PT03070

Simulated fecal samples compatible with FOB (slide), iFOB, and automated systems.

Two shipments per year
Three samples per shipment

	CLIA REGULATED	UNREGULATED
ANALYTES		• Occult blood (fecal)

Fetal Fibronectin (FFN)

Item PT03100

1mL liquid simulated cervicovaginal samples.

Two shipments per year
Three samples per shipment

	CLIA REGULATED	UNREGULATED
ANALYTES		• Fetal fibronectin

Gastric Occult Blood (GO)

Item PT03110

Liquid samples intended for Beckman Coulter Gastroccult slides and Aerscher HemaPrompt FG slides.

Two shipments per year
Three samples per shipment

	CLIA REGULATED	UNREGULATED
ANALYTES		• Occult blood (gastric) • pH (Gastroccult slides)

NOTE: For body fluid pH other than Beckman Coulter Gastroccult slides, see PC or PH product on page 12.

URINALYSIS / MICROSCOPY / MISC

Provider Performed Microscopy (PM)

Item PT03170

Two images (paper and online versions) for each of the procedures listed below.

	CLIA REGULATED	UNREGULATED
ANALYTES		<ul style="list-style-type: none"> • Fecal smear for leukocytes • Fern test • KOH (skin & vaginal) • Nasal smear for eosinophils • Pinworm preparation • Urine sediment • Vaginal wet preparation

Two shipments per year
Two challenges per procedure

NOTE: Online PPM Competency is also available on page 57.

Urinalysis / Urine hCG (UR)

Item PT03260

Liquid samples for urinalysis and urine pregnancy.

	CLIA REGULATED	UNREGULATED
ANALYTES		<ul style="list-style-type: none"> • Bilirubin • Bilirubin - Tablet test • Glucose • hCG, urine – qualitative • Hemoglobin/Blood • Ketones • Ketones - Tablet test • Leukocyte esterase • Nitrites • pH • Protein • Specific gravity • Urobilinogen

Two shipments per year
Three samples per shipment

NOTE: For serum hCG see CET and HCG products on page 14.

Urine hCG - 5 Samples (UH)

Item PT03290

Liquid samples for urine pregnancy.

	CLIA REGULATED	UNREGULATED
ANALYTES		<ul style="list-style-type: none"> • hCG, urine – qualitative

Two shipments per year
Five samples per shipment

NOTE: For serum hCG see CET and HCG products on page 14.

URINALYSIS / MICROSCOPY / MISC

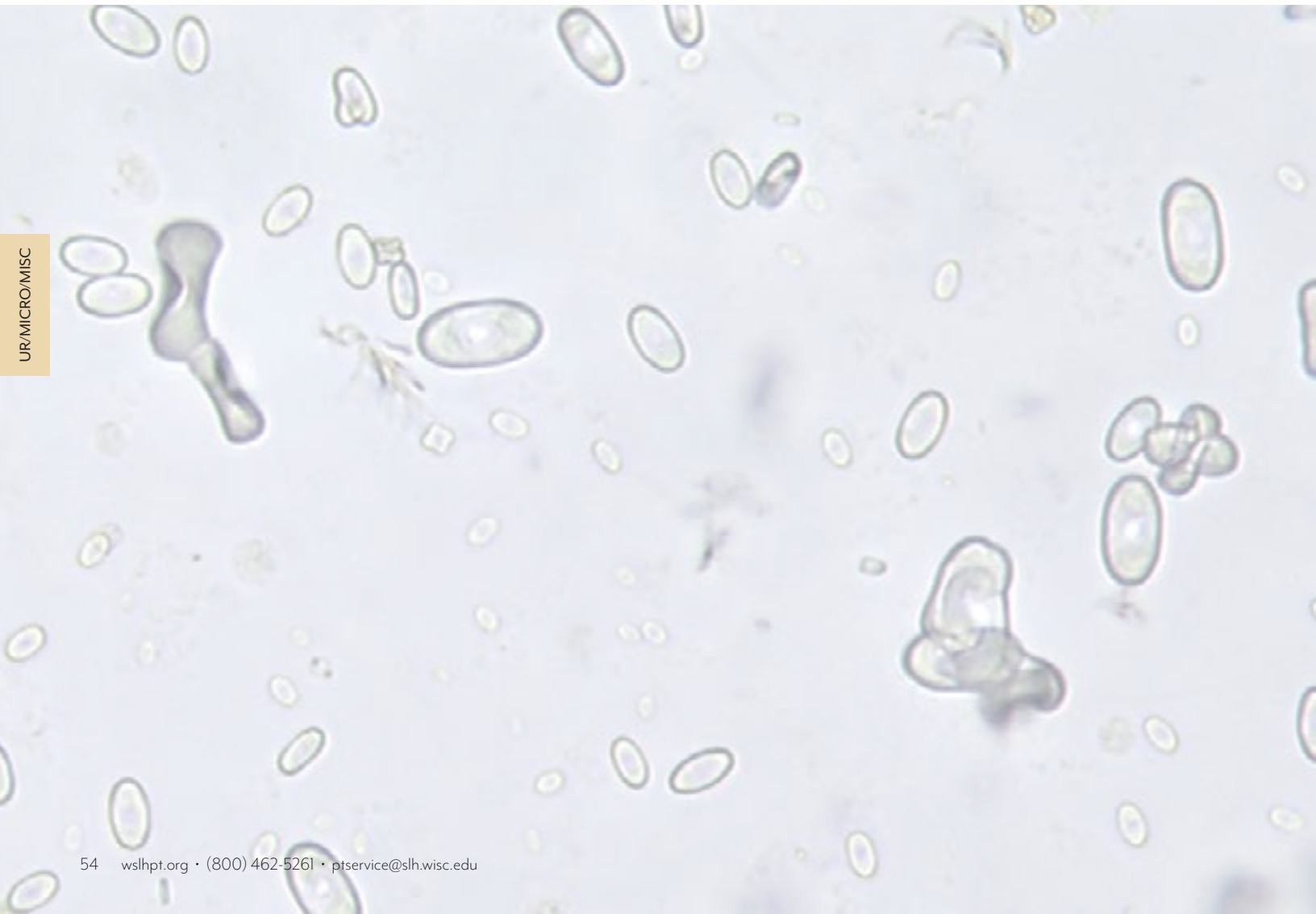
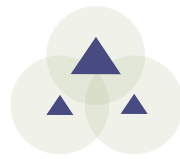
Urine Sediment Identification (SU)

Item PT03320

Two images (paper and online versions) for the identification of urine sediment components.

Two shipments per year
Two challenges per shipment

CLIA REGULATED	UNREGULATED
ANALYTES	• Urine sediment component identification



UR/MICRO/MISC

Post-Vasectomy Semen Analysis (PV)

Item PT03140

1mL stabilized liquid sperm samples for post-vasectomy presence/absence screening and sperm count. Compatible with manual and automated methods.

Two shipments per year
Two samples per shipment

	CLIA REGULATED	UNREGULATED
ANALYTES		<ul style="list-style-type: none"> • Sperm count, qualitative • Sperm count, quantitative

Sperm Count (SP)

Item PT03200

1mL stabilized liquid sperm samples. Compatible with manual and automated methods.

Two shipments per year
Two samples per shipment

	CLIA REGULATED	UNREGULATED
ANALYTES		<ul style="list-style-type: none"> • Sperm count, quantitative

Sperm Morphology (SM & SMS)

Unstained slide (SM) Item PT03210
Pre-stained slide (SMS) Item PT03220

Slide and image for percent normal and morphology assessment. Pre-stained slide is stained with modified Papanicolaou.

Two shipments per year
One slide & image per shipment

	CLIA REGULATED	UNREGULATED
ANALYTES		<ul style="list-style-type: none"> • Sperm morphology

ANDROLOGY

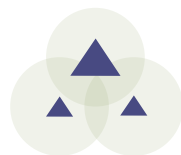
Sperm Motility (MOT)

Web-based videos of two semen samples with multiple microscopic fields showing live and immobilized sperm.

Item PT03230

Two shipments per year
Two videos per shipment

	CLIA REGULATED	UNREGULATED
ANALYTES		<ul style="list-style-type: none">• Sperm motility• Sperm progressive motility



ONLINE TRAINING & COMPETENCY

WSLH Proficiency Testing has partnered with Medical Training Solutions (MTS) at the University of Washington to bring you customizable Online Training & Competency. [View a demo video](#) or [submit an order form](#) online at wslhpt.org.



Clinical Laboratory

Track training and competency of staff involved in all phases of laboratory testing: specimen collection, transport, processing and analysis.



Point of Care

Administer and track competency tests for staff using microscopes, waived test kits, and instruments at the point of care.



Specimen Collection

Track and document training and competency assessment for specimen collection staff.

WSLH PT is pleased to offer our customers online training and competency assessment for the clinical laboratory and point of care through Medical Training Solutions (MTS).

These programs are used by over 1500 laboratories and feature:

- Streamlined tracking and documentation
- High quality multimedia content developed with the University of Washington
- Over 50 hour of Continuing Education (CE) credit
- Create your own tests
- Upload and track your existing documents

The MTS Training and Competency features:

- High quality digital images
- New questions in each Competency topic are published biannually
- Simple test interfaces - multiple choice format that is easy to navigate
- Automated email notifications - one click sends reminders to your staff
- Automated login for test takers - email notifications provide an auto login link Test taker simply clicks on this link to go directly to their assignments menu
- Real time monitoring of test completions and documentation for inspectors - use the reporting feature to track progress and to generate printable reports

ORDER OPTIONS

All order options include access for up to 30 individuals. Please consult the price list for additional fees for more than 30 users.

Order Options for Training Courses and Competency Tests

- BEST OPTION -

Receive All Training Courses and Competency Tests for \$800!

Items may be ordered separately or combined for savings.

View complete order options for Training Courses and Competency Tests on the 2021 Price List.

Order Options for Microscopy Procedures (PPMP)

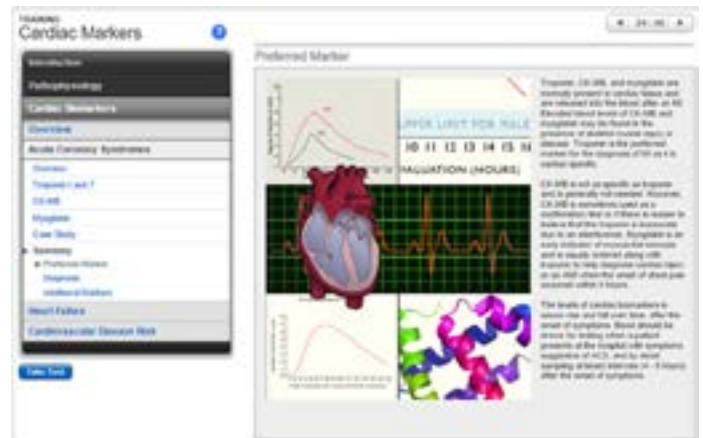
PPMP Training Courses and PPMP Competency Assessment may be ordered separately or combined for savings.

View order options on the 2021 Price List.

Order Options for Waived Test Kits and POC Instruments (WPOC)

WPOC Competency Assessment may be ordered separately or as an add on to any Training Course and/or Competency Test order.

View order options on the 2021 Price List.



The screenshot shows a training module titled "Cardiac Markers". It includes a sidebar with navigation options like "Introduction", "Clinical Indications", "Assessment", "Preparation", "Use Only", "Testing", "Reference Ranges", "Interpretation", "Special Features", and "Cardiac Marker Decision Tree". The main content area displays a graph of troponin levels over time, a 3D heart model, and a molecular structure of a protein. Text on the right explains that troponin is normally present in cardiac tissue and is released into the blood after an MI. It also notes that troponin is a preferred marker for the diagnosis of MI as it is highly specific.



The screenshot shows a competency test question titled "Hematology". The question number is 10 of 10. The text of the question reads: "A patient arrived in the emergency room with a decreased platelet count of 43 (x 1000/L). Several large platelets were observed by technologist when reviewing the peripheral smear. A bone marrow aspirate was performed, and increased numbers of megakaryocytes were found. The reason for the patient's decreased platelet count is most likely due to:" Below the question are two radio button options: "Increased platelet destruction/consumption" and "Decreased platelet production". A "Submit Answer" button is at the bottom.

ONLINE TRAINING & COMPETENCY

TRAINING COURSES AND COMPETENCY TESTS

Training Courses

All Training Courses PT80000
Individual Training Courses See below

Training courses are accredited for 1-3 hours of continuing education (CE) credit and can be used for initial training, cross training, remediation, and as a reference.

Overview		Blood Culture	PT80390	Serous Fluid	PT80190
Introduction to the Clinical Laboratory	PT80060	Patient Complications	PT80510	Synovial Fluid	PT80200
Introduction to Analytic QA	PT80150	Specimen Transport & Processing		Amniotic Fluid	PT80210
Patient Safety	PT80090	Specimen Transport	PT80400	Vaginal Wet Prep	PT80470
Safety		Courier Transport	PT80410	Fern Test	PT80480
Biosafety	PT80120	Specimen Processing	PT80130	Skin KOH	PT80490
Chemical Safety	PT80260	Laboratory Skills		Microbiology	
HazCom Standard - GHS Update	PT80270	Microscopy	PT80080	Gram Stain	PT80030
Chemical Waste	PT80460	Molecular Diagnostics		Mycology	PT80070
Infection Control	PT80280	Introduction to Molecular Diagnostics	PT80420	Parasitology	PT80220
Electrical Safety	PT80290	Chemistry		Blood Bank	
Fire Safety	PT80300	Cardiac Markers	PT80160	Introduction to Transfusion	PT80010
Ergonomic Safety	PT80310	Protein Electrophoresis	PT80110	Transfusion Safety:	
UV Safety	PT80320	Urinalysis	PT80140	Ordering & Administering	PT80230
Formaldehyde Safety	PT80330	Hematology		Specimen Collection	PT80240
Dry Ice and Liquid Nitrogen Safety	PT80500	Peripheral Blood	PT80040	Testing and Issuance	PT80250
Specimen Collection		Coagulation		Immunology	
Basic Phlebotomy	PT80100	Coagulation	PT80170	Laboratory Methods	PT80050
Pediatric Phlebotomy	PT80340	Body Fluids		Anti-nuclear Antibody	PT80430
Advanced Phlebotomy	PT80350	Cerebrospinal Fluid	PT80020	Mouse Stomach Kidney	PT80440
Patient Identification	PT80360	Seminal Fluid	PT80180	ANCA	PT80450
Skin Puncture	PT80370				
Venipuncture	PT80380				

Competency Tests

All Competency Tests PT81000
Individual Competency Tests See below

Five- or ten-question multiple choice competency assessment tests (accredited for 0.5 hours of CE credit each) are published biannually on January 1st and July 1st in each category.

Pre-Analytic		Transfusion Safety:		Gram Stain	PT81050
Safety	PT81130	Ordering & Administering	PT81210	Hepatitis & HIV Ab	PT81070
Customer Service	PT81170	Specimen Collection	PT81220	Coagulation	PT81040
Patient Safety	PT81100	Analytic		Toxicology	PT81150
Phlebotomy	PT81110	Chemistry	PT81030	Semen Analysis	PT81230
Pediatric Phlebotomy	PT81180	Urinalysis	PT81160	Transfusion Safety: Testing & Issuance	PT81240
Chain of Custody	PT81190	Protein Electrophoresis	PT81120	Transfusion Service: Basic	PT81010
Specimen Processing	PT81140	Hematology	PT81060	Transfusion Service: Intermediate	PT81250
Specimen Transport	PT81200	CSF/Serous	PT81020	Anti-nuclear Antibody	PT81080
		Microbiology	PT81090	Mouse Stomach Kidney	PT81260
				ANCA	PT81270

Training Courses and Competency Tests combined

All of both Training and Competency PT80900
Individual Training and Competency combined See above

ONLINE TRAINING & COMPETENCY

POINT OF CARE

Microscopy Procedures (PPMP)

- Training Courses and Competency Assessment

PPMP Training Courses

PT80520

PPMP Competency Assessment

PT81900

PPMP Training and PPMP Competency together

PT81920

Includes:	PPMP Training	<ul style="list-style-type: none"> • Qualitative Semen • Skin KOH • Urine Sediment • Vaginal Wet Prep 	PPMP Competency	<ul style="list-style-type: none"> • Pinworm • Qualitative Semen • Skin KOH • Urine Sediment 	<ul style="list-style-type: none"> • Vaginal KOH • Vaginal Wet Prep
	<ul style="list-style-type: none"> • Basic Microscopy • Fern Test • Pinworm 	<ul style="list-style-type: none"> • Fecal WBC • Fern Test • Nasal Eosinophils 			

Waived Test Kits & POC Instruments (WPOC)

- Competency Assessment

WPOC Competency Assessment

PT81910

WPOC Add-on to any Training and/or Competency

PT81913

Includes:	<ul style="list-style-type: none"> • AICNOW+ Glucose Meter • Aceava Mono Cassette • Accu-Chek Aviva • Accu-Chek Inform II • Amniotest • AmniSure • AVOXimeter 1000E • Bayer Clinitest (5-drop method) • BD Directigen EZ Flu AB • BD Directigen EZ RSV • BiliChek • BinaxNOW Influenza A&B • BinaxNOW RSV • BioStar Aceava 	<ul style="list-style-type: none"> • Strep A • Chemstrip 10 SG • Cholestech LDX - AST/ALT • Clearview hCG II • Clinitex - Clinitest hCG • Clinitex - Multistix 10 SG • Clinitex 50 • CLOTtest • CoaguChek XS Plus PT/INR • Coloscan Fecal Occult Blood • ColoScreen • DCA 2000 • DCA Vantage • ESR • Gastrocult 	<ul style="list-style-type: none"> • HemaPrompt FG • Hemocult/ Hemocult II • Hemocult Senso • Hemochron ACT+ • Hemochron ACT-LR • Hemochron Signature Elite • HemoCue 201 Glucose • HemoCue B-Hemoglobin • HemoCue Hb 201 DM • HemoCue Hb 201+ • HemoCue WBC • i-STAT - ACT • i-STAT - G3 • i-STAT - Operations • i-STAT - CG8+ 	<ul style="list-style-type: none"> • ICON HP (H. pylori) • Ketostix • LeadCare II • McKesson HCG Combo Cassette • McKesson hCG Urine • Multistix 10 SG • Nitrazine Paper • Nova StatSensor Creatinine Meter • Nova StatStrip Glucose Meter • OneScreen Multiple Drug Screen Cup • OraQuick Advance Rapid HIV-1/2 Ab Test • OSOM Card Pregnancy Test • OSOM hCG 	<ul style="list-style-type: none"> • Combo • OSOM Strep A • OSOM Ultra Strep A • pHydriion Papers • Precision XceedPro • Propper Seracult • QuickTox Drug Screen • QuickVue Dipstick Strep A • QuickVue hCG • QuickVue hCG Combo • QuickVue Influenza A+B • QuickVue Strep A • QuickVue+ Combo hCG • Rapid Tox 	<ul style="list-style-type: none"> • Buprenorphine • Refractometer, Urine Specific Gravity • Remel Rapid Flu AB • Signify Mono • SP hCG Combo • SP pH Indicator Strips • SP Strep A Dipstick • Status Mono • Sure-Vue Fecal Occult Blood • Sure-Vue hCG Stat • Triage Cardiac Panel • Uni-Gold Recombigen HIV • Uristix • Urisys 1100
------------------	--	--	--	---	--	---

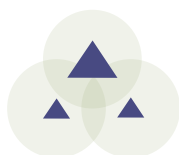
MTS LECTURE LIBRARY SUBSCRIPTION

PT81800

Subscription provides access to a monthly, live 1 hour webinar primarily focused on Laboratory Management topics. Subscribers may share the access with all employees in their organization. After participating in each webinar, users have the option to complete a test to earn 1.0 CE credits.

This subscription also provides the user access to the library of more than 60 archived lectures. Each lecture is archived and available on their MTS account approximately one month after the presentation date.

Upon completion of the archived lecture the user will be able to complete a 10 question test and then earn 1.0 CE credits.



INDEX

A

ABO group	27
A/C ratio	18
Acetaminophen	14
Acetaminophen, urine	19
Acetone	11
6-AM (6-Acetylmorphine)	19
Acid-fast stain	43
Activated clotting time (ACT)	20
Activated partial thromboplastin time (APTT)	20
Adenovirus	48, 50
Aerobic Actinomyces identification	44
Alanine transferase (ALT)	13, 14
Albumin	13, 14
Albumin, body fluid	12
Alcohol (ethanol)	11
Alcohol (ethanol), urine	19
Alkaline phosphatase (ALKP)	13, 14
Alpha-1 Antitrypsin (AAT)	30
Alpha-fetoprotein	14
Amikacin	14
Ammonia	11
Amniotic fluid detection	51
Amphetamines	19
Amylase	13, 14
Amylase, body fluid	12
Amylase, urine	18
Anaerobic bacteria culture	34
Anaplasma species	46
Antibody identification, blood bank	27
Anti-HIV	29
Antimicrobial susceptibility	34, 41
Antinuclear antibody (ANA)	28
Antistreptolysin O (ASO)	28
Anti-Thyroglobulin	32
Anti-Thyroid Peroxidase	32
Aspartate transferase (AST)	13, 14

B

Babesia species	46
Bacterial vaginosis detection	33, 42
Barbiturates	19
Benzodiazepines	19
Beta-2 Microglobulin	18
Beta-hydroxybutyrate	11
Bilirubin, direct	11, 14
Bilirubin, total	11, 13, 14
Bilirubin, urine	53
Blood Bank	27
Blood culture	34, 35
Blood Gases	8, 9
Blood Lead	12
Blood parasite identification	46
BNP	10
Bordetella	35, 48
Borrelia burgdorferi (Lyme disease)	30
Buprenorphine	19

C

CA 125	18
CA 15-3	18
CA 19-9	18
CA 27.29	18
Calcium, ionized	8
Calcium, total	13, 14
Calcium, urine	18
Candida detection	42
Cannabinoids (THC)	19
Carbamazepine	14
Carbapenem resistance	35
Carbon dioxide (CO ₂)	8, 13, 14
Carboxyhemoglobin	9
Carcinogenic embryonic antigen (CEA)	16
Cardiac Markers	10
Carisoprodol	19
Cell identification, body fluid	51
Cell identification, hematology	24
Chemistry - Body Fluid	12
Chemistry - Immunoassay	16
Chemistry - Spinal Fluid	17
Chemistry - Urine	18
Chemistry - Waived Methods	9, 13
Chlamydia trachomatis detection	36
Chlamydophila pneumoniae	48
Chloride	8, 9, 13, 14
Chloride, spinal fluid	17
Chloride, urine	18
Cholesterol, body fluid	12
Cholesterol, HDL	13, 14
Cholesterol, LDL (calculated)	13, 14
Cholesterol, LDL (measured)	14
Cholesterol, total	13, 14
CK-MB	10
Clostridium difficile toxin and/or antigen detection	34, 36
Coagulation	20, 21
Cocaine metabolites	19
Compatibility testing	27
Complement C3	30
Complement C4	30
Coronavirus	32, 48, 49
Cortisol	14
Cotinine	19
C-peptide	17
C-reactive protein (CRP)	10, 28
Creatine Kinase (CK)	10, 13, 14
Creatinine	8, 9, 13, 14
Creatinine, body fluid	12
Creatinine, urine	18, 19
Cryptococcal antigen detection	44
Cryptococcus neoformans/gattii	40
Cryptosporidium detection	37, 46
Crystal identification, body fluid	51
Cyclospora	37
Cytomegalovirus (CMV)	40

INDEX

D

DAT	27
D-dimer	10, 20
Dermatophyte	44
DHEA Sulfate	16
Digoxin	14

E

EDDP	19
Ehrlichia species	46
Endocrinology	14
Entamoeba histolytica	37
Enteric pathogen identification	34, 36
Enterovirus (EV)	40
Eosinophils, nasal smear	53, 54
Erythrocyte count (RBC), blood	23
Erythrocyte count (RBC), body fluid	51
Erythrocyte sedimentation rate	25
Escherichia coli KI	33, 40
Estradiol	16
Ethanol (alcohol)	11
Ethanol (alcohol), urine	19
Ethyl Glucuronide (EtG)	19

F

Fecal smear for leukocytes	53
Fentanyl	19
Fern test	53
Ferritin	16
Fetal fibronectin	52
Fetal hemoglobin	26
Fetal Screen	26
Fetal Red Cell Detection	26
Fibrinogen	20
Filarial worms	46
Folate	16
Follicle stimulating hormone (FSH)	16
Free thyroxine (FT4)	14
Free triiodothyronine (FT3)	14
Fungus Identification	44

G

Gamma glutamyltransferase (GGT)	13, 14
Gardnerella detection	42
Gentamicin	14
GI multiplex panel	37
Giardia	37, 46
Glucose	8, 9, 13, 14
Glucose, body fluid	12
Glucose, spinal fluid	17
Glucose, urine	18, 53
Glucose, whole blood	15
Glycohemoglobin (Hemoglobin A1c)	16
Gram stain	34, 35, 37, 41

H

Haemophilus influenzae	40
------------------------	----

Haemophilus influenzae type b	33
hCG, serum	14
hCG, urine	53
Helicobacter pylori (total antibody)	28
Helicobacter pylori Antigen, Stool	39
Hematocrit	8, 9, 23, 26
Hematocrit, waived methods	9, 26
Hematology	22, 23, 24, 25, 26
Hemoglobin	8, 9, 15, 23
Hemoglobin A1c (Glycohemoglobin)	16
Hemoglobin/Blood, urine	53
Hemoglobin F	26
Hemoglobin, waived methods	9, 15
Hepatitis - Anti-HAV, IgM	29
Hepatitis - Anti-HBc (total antibody)	29
Hepatitis - Anti-HBc, IgM	29
Hepatitis - Anti-HBs	29
Hepatitis - Anti-HCV	29
Hepatitis - HBsAg	29
Herpes Simplex virus (HSV)	40, 48
HIV (Anti-HIV)	29
HIV-p24 Antigen	29
Homocysteine	16
HPV Genotyping	48
hs-CRP	10
Human herpesvirus 6 (HHV-6)	40
Human metapneumovirus	48
Human Papillomavirus (HPV)	48
Human parechovirus (HPeV)	40

I

IG%	23
IgA	30
IgE	30
IGFBP, amniotic fluid	51
IgG	30
IgM	30
Immunoproteins	30
India Ink (encapsulated yeast detection)	45
Infectious mononucleosis	30, 31
Influenza	48, 50
INR	20, 21
Insulin	17
Ionized calcium	8
Ionized magnesium	8
IRF	24
Iron binding capacity (TIBC), calculated	14
Iron binding capacity (TIBC), measured	14
Iron, total	14

K

Ketones	11
Ketones, urine	53
KOH (skin & vaginal)	53
KOH Preparation	44

L

Lactate (Lactic acid)	8, 14
-----------------------	-------

INDEX

Lactate (Lactic acid), spinal fluid	.17
Lactate dehydrogenase (LDH)	.14
Lactate dehydrogenase (LDH), body fluid	.12
Lactate dehydrogenase (LDH), spinal fluid	.17
Lactoferrin	.51
Lead, blood	.12
Legionella antigen	.39
Leukocyte count (WBC), blood	.23
Leukocyte count (WBC), body fluid	.51
Leukocyte esterase	.53
Leukocytes, fecal smear	.53
Lipase	.14
Listeria monocytogenes	.40
Lithium	.14
Luteinizing hormone (LH)	.16
Lyme disease (Borrelia burgdorferi)	.30

M

Magnesium	.14
Magnesium, ionized	.8
Magnesium, urine	.18
MCV	.23
MDMA (Ecstasy)	.19
Measles IgG, IgM	.30
Meningitis Multiplex	.40
Meperidine	.19
Methadone	.19
Methamphetamines	.19
Methaqualone	.19
Methemoglobin	.9
Methicillin-resistant Staph aureus (MRSA)	.34, 40
Microalbumin	.18
Modified acid-fast stain	.46
Mold, yeast, and yeast-like organism identification	.44
Mononucleosis infectious	.30, 31
MPV	.23
Mumps IgG, IgM	.30
Mycobacteria culture	.43
Mycobacteriology	.43
Mycobacterium tuberculosis detection	.43
Mycology	.44, 45
Mycoplasma antibody	.31
Mycoplasma genitalium	.40
Mycoplasma pneumoniae	.48
Myoglobin	.10

N

Nasal smear for eosinophils	.53
Neisseria gonorrhoeae culture	.34, 39
Neisseria gonorrhoeae molecular	.36
Neisseria meningitidis	.40
Neisseria meningitidis group A, B, C, Y, W135	.33
Nitrites	.19, 53
NT-proBNP	.10
Nucleated red blood cells (NRBC)	.23

O

Occult blood (fecal)	.52, 53
----------------------	---------

Occult blood (gastric)	.52
Opiates	.19
Osmolality	.14
Osmolality, urine	.18
Oxidants	.19
Oxycodone	.19
Oxyhemoglobin	.9

P

p24 Antigen	.29
PAMG-1 protein, amniotic fluid	.51
Parainfluenza	.48
Parasitology	.46, 47
pCO ₂	.8
Permanent stain (for parasitology)	.46
pH, amniotic fluid	.12
pH, blood	.8
pH, body fluid	.12
pH, gastric	.12, 52
pH, urine	.19, 53
Phencyclidine (PCP)	.19
Phenobarbital	.14
Phenytoin (Dilantin)	.14
Phosphorus	.13, 14
Phosphorus, urine	.18
Pinworm preparation	.53
Plasmodium species	.46
Platelet count	.23
pO ₂	.8
Post-vasectomy	.56
Potassium	.8, 9, 13, 14
Potassium, spinal fluid	.17
Potassium, urine	.18
PPI2/AFP, amniotic fluid	.51
Prealbumin	.16
Procalcitonin	.17
Progesterone	.16
Prolactin	.16
Propoxyphene	.19
Prostate-specific antigen (PSA), free	.18
Prostate-specific antigen (PSA), total	.16
Protein, body fluid	.12
Protein, spinal fluid	.17
Protein, total	.13, 14
Protein, urine	.18, 53
Protome (PT)	.20, 21
Provider Performed Microscopy	.53
PTH, intact	.17

R

Rapid Urease	.39
RBC (Erythrocyte count), blood	.23
RBC (Erythrocyte count), body fluid	.51
RDW	.23
Re-He	.24
Respiratory Multiplex Panel	.48
Respiratory syncytial virus (RSV)	.48, 50
Reticulocyte count	.24

INDEX

Rh (D) typing	27
Rheumatoid factor	31
Rhinovirus/Enterovirus	48
Rifampin resistance screen (M. tuberculosis)	43
Rotavirus	50
Rubella IgG, IgM	31, 32
Rupture of fetal membranes	12, 51

S

Salicylate	14
SARS-CoV-2	32, 49
Sex Hormone-Binding Globulin	17
Shiga toxin	41
Sickle cell screen	26
Sodium	8, 9, 13, 14
Sodium, spinal fluid	17
Sodium, urine	18
Specific gravity	19, 53
Sperm count	55
Sperm morphology	55
Sperm motility	56
Sperm progressive motility	56
Staphylococcus aureus	40
Stool wet mount (for parasitology)	46
Strep A antigen detection	34, 38, 41
Strep A culture	34, 38, 41
Strep B antigen	33
Strep B culture	34, 39
Strep B molecular	34, 39
Streptococcus agalactiae	40
Streptococcus pneumoniae	33, 40
Syphilis Nontreponemal	32
Syphilis Treponemal	32

T

T3 Uptake / T-Uptake	14
Testosterone, bioavailable	17
Testosterone, free	17
Testosterone, total	16, 17
Theophylline	14
Therapeutic Drugs	14
Thyroglobulin Antibody	32
Thyroid Antibodies	32
Thyroid Peroxidase/ Microsomal Antibody	32
Thyroid-stimulating hormone (TSH)	14
Thyroxine (T4)	14
TIBC (Iron binding capacity), calculated	14
TIBC (Iron binding capacity), measured	14
Tobramycin	14
Tramadol	19
Transferrin	16
Trichomonas detection	42, 47
Tricyclic antidepressants	19
Triglycerides	13, 14
Triglycerides, body fluid	12
Triiodothyronine (T3)	14
Troponin I	10
Troponin T	10

Trypanosoma species	46
Tumor Markers (AFP)	14
Tumor Markers	14, 18

U

UIBC	14
Unexpected antibody detection	27
Urea nitrogen, blood (BUN)	8, 9, 13, 14
Urea nitrogen, urine	18
Urease	39
Uric acid	13, 14
Uric acid, urine	18
Urinalysis	53, 54
Urine adulteration test	19
Urine culture	34, 41
Urine drug screen	19
Urine hCG	53
Urine sediment	53, 54
Urobilinogen	53

V

Vaginal wet preparation	53
Valproic acid	14
Vancomycin	14
Vancomycin-resistant Enterococcus (VRE)	34, 40
Varicella zoster IgG, IgM	30
Varicella zoster virus (VZV)	40
Virology	48, 49, 50
Vitamin B12	16
25-OH Vitamin D, total	17

W

WBC (Leukocyte count), blood	23
WBC (Leukocyte count), body fluid	51
WBC differential - automated	23
Whole Blood Glucose	15
Wound culture	34

Y

Yeast and yeast-like organism identification	44, 45
--	--------

Z

Zolpidem	19
--------------------	----

YOUR LAB OUR MISSION

WSLH PROFICIENCY TESTING



The national public health lab that is on a mission to provide reliable, affordable, and easy-to-use proficiency testing products with rapid access to results.

From staffing productivity and ever-evolving technology to time constraints and redirected revenue, Wisconsin State Laboratory of Hygiene (WSLH) Proficiency Testing knows you are working more strategically than ever before to break down barriers to quality patient testing. Everyday behind the doors of Wisconsin's public and environmental health lab, WSLH Proficiency Testing is helping labs like yours stay creative and in control of your costs without sacrificing accurate, reliable results.

Located in the beautiful capital city of Madison, Wisconsin, WSLH Proficiency Testing is part of a national public health lab that connects you to a team of experienced Medical Technologists and to an array of relevant resources to help you overcome quality assurance challenges.

WSLH Proficiency Testing has been building a solid foundation for clinical laboratory improvement since 1966. Our program is approved by CMS and is accepted by the College of American Pathologists (CAP), The Joint Commission, and COLA.

To learn more about our products, visit wslhpt.org, or call (800) 462-5261.