

Plate Growth Distribution Training Guide

Skin and Soft Tissue Culture



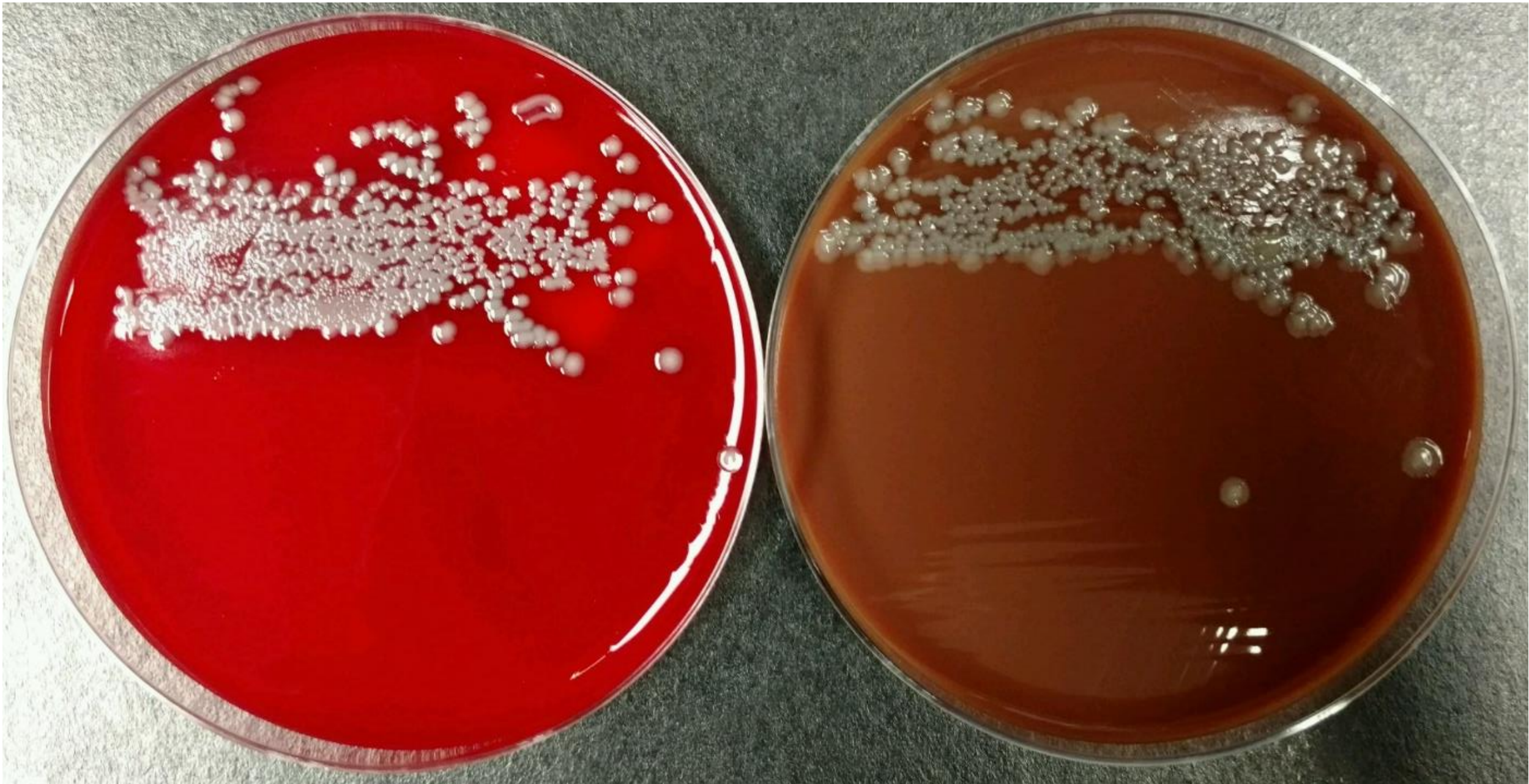
Compiled by:

Wisconsin Clinical Laboratory Network
Laboratory Technical Advisory Group (LabTAG)

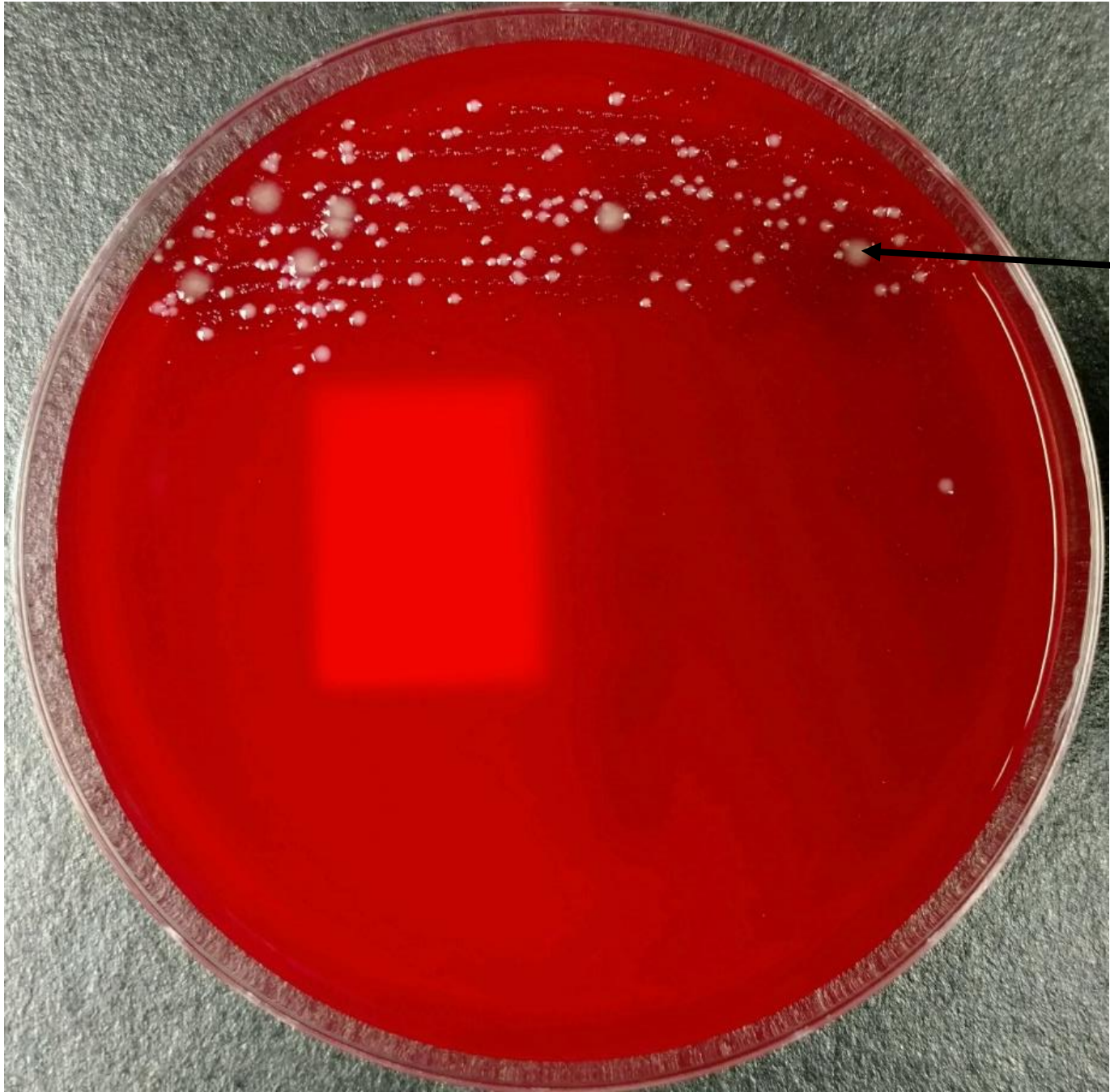
Wound culture (blood, chocolate agar):
Pseudomonas aeruginosa



Wound culture (blood, chocolate agar):
Enterobacteriaceae



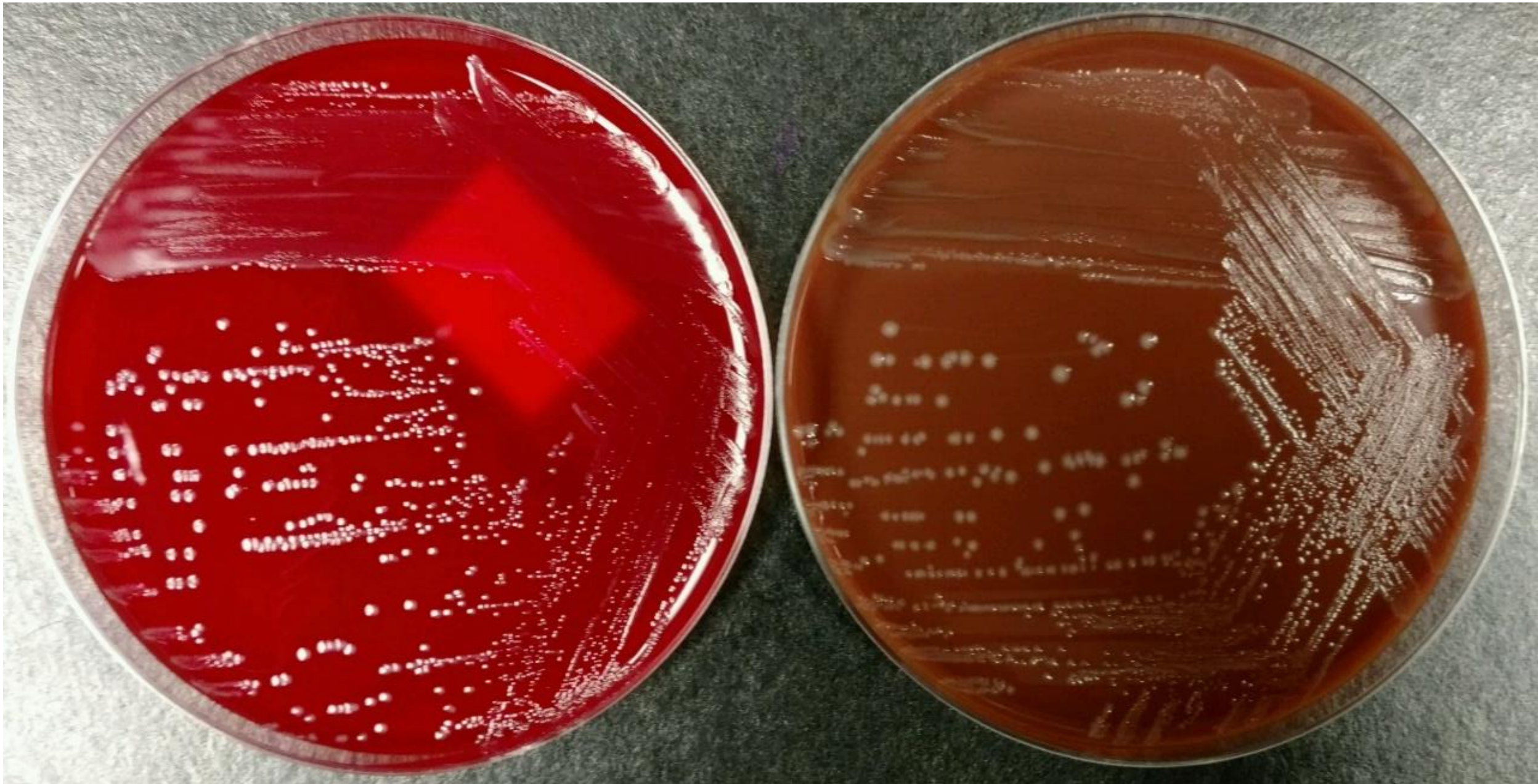
Wound culture (blood agar):
rare *Enterobacteriaceae* with mixed skin flora



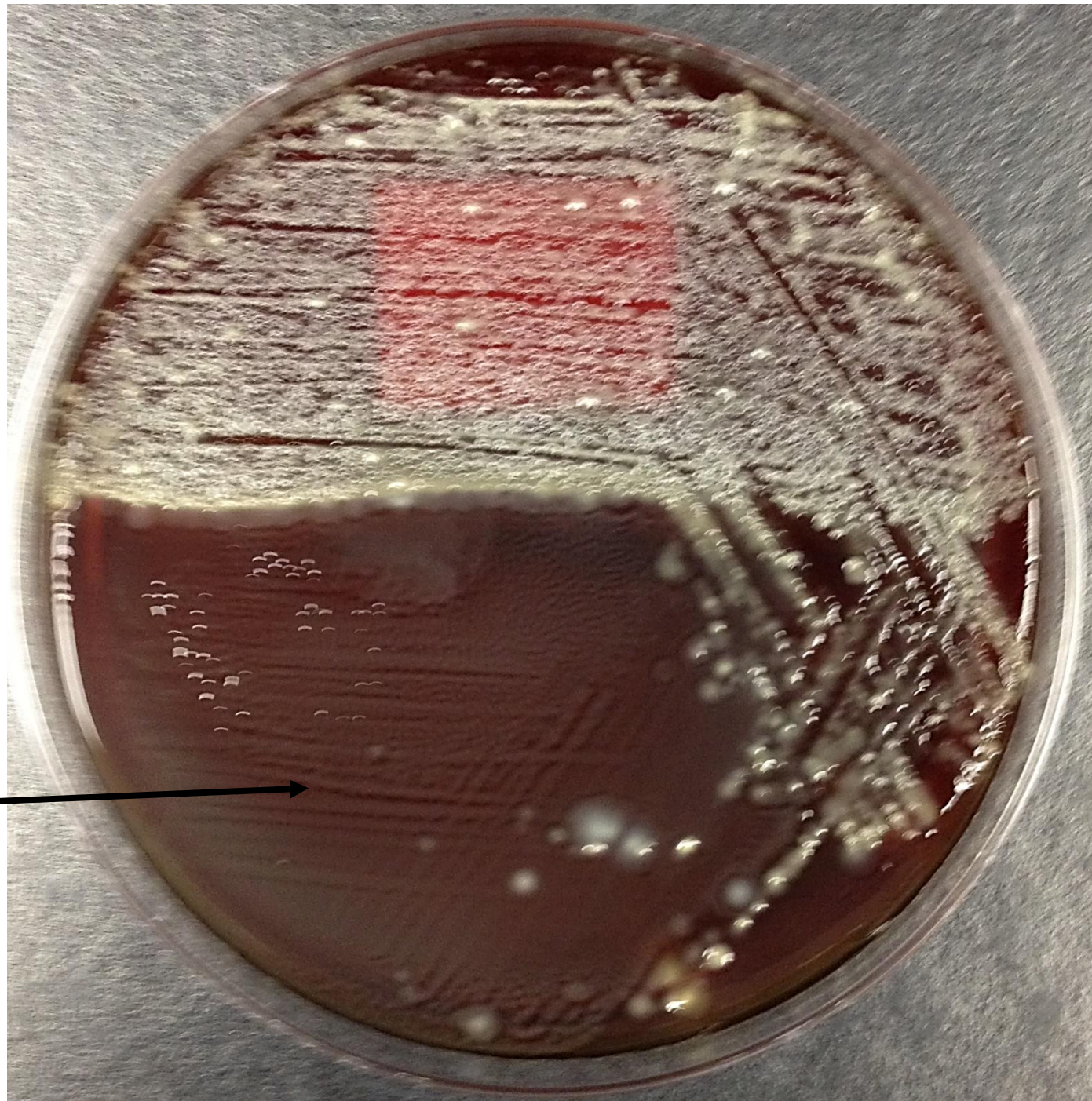
Enterobacteriaceae



Wound culture (blood, chocolate agar):
Streptococcus agalactiae



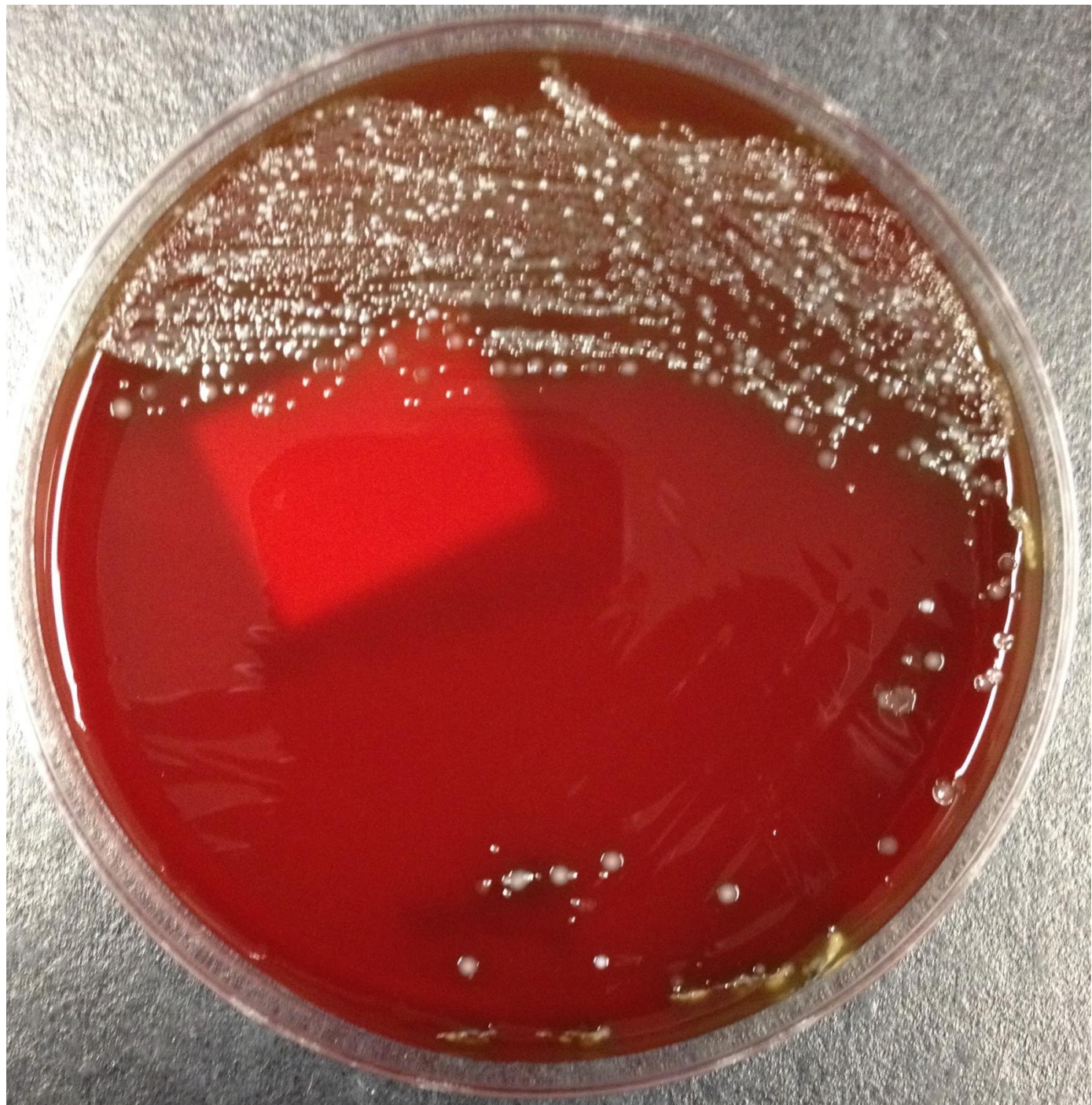
Foot culture (anaerobic blood agar):
normal skin flora plus *Proteus mirabilis*



Proteus mirabilis



Wound culture (anaerobic blood agar):
normal skin flora



Toe culture (chocolate agar):
normal skin flora (including diphtheroids)

