

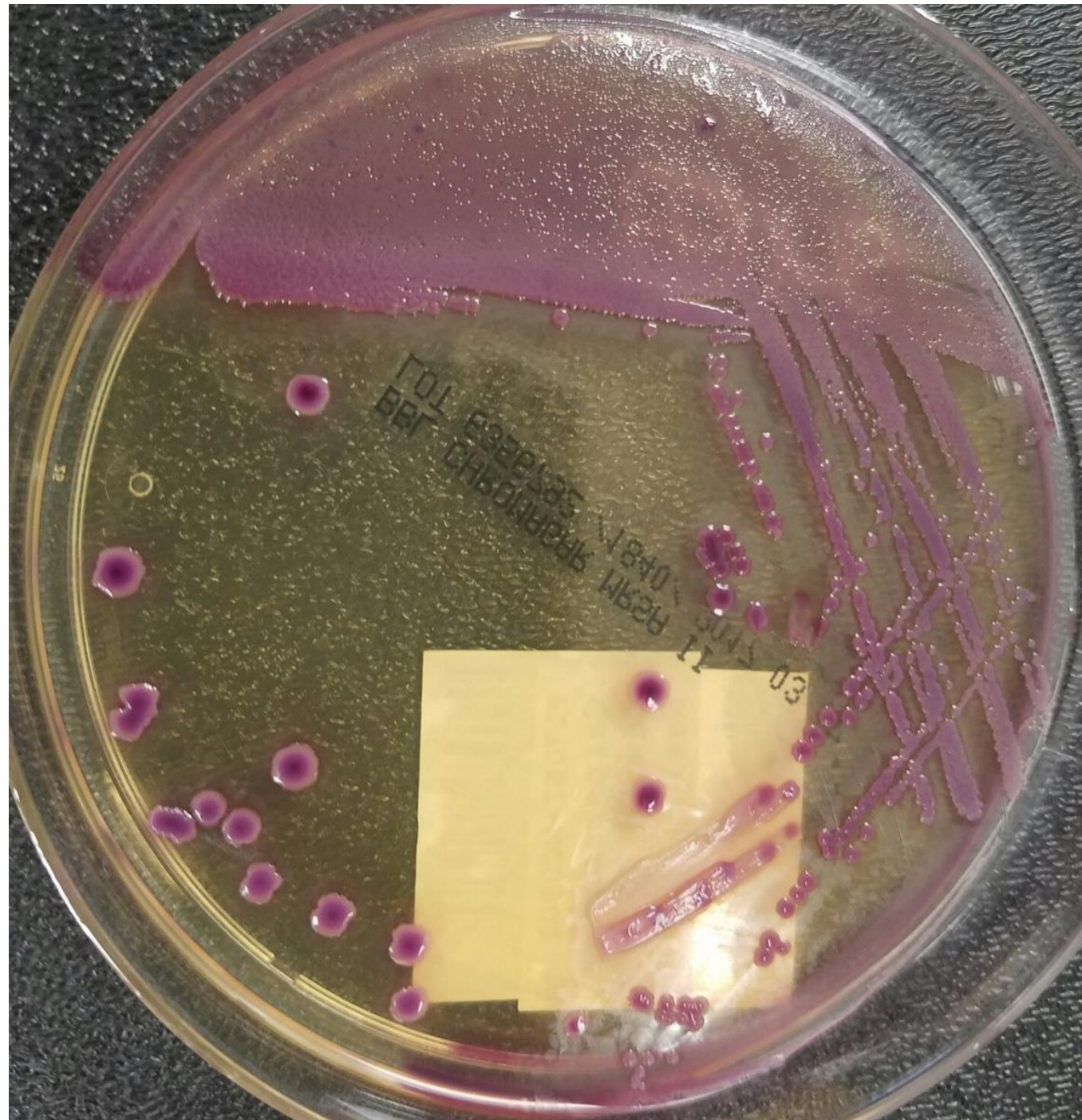
Plate Growth Distribution Training Guide

Miscellaneous Findings

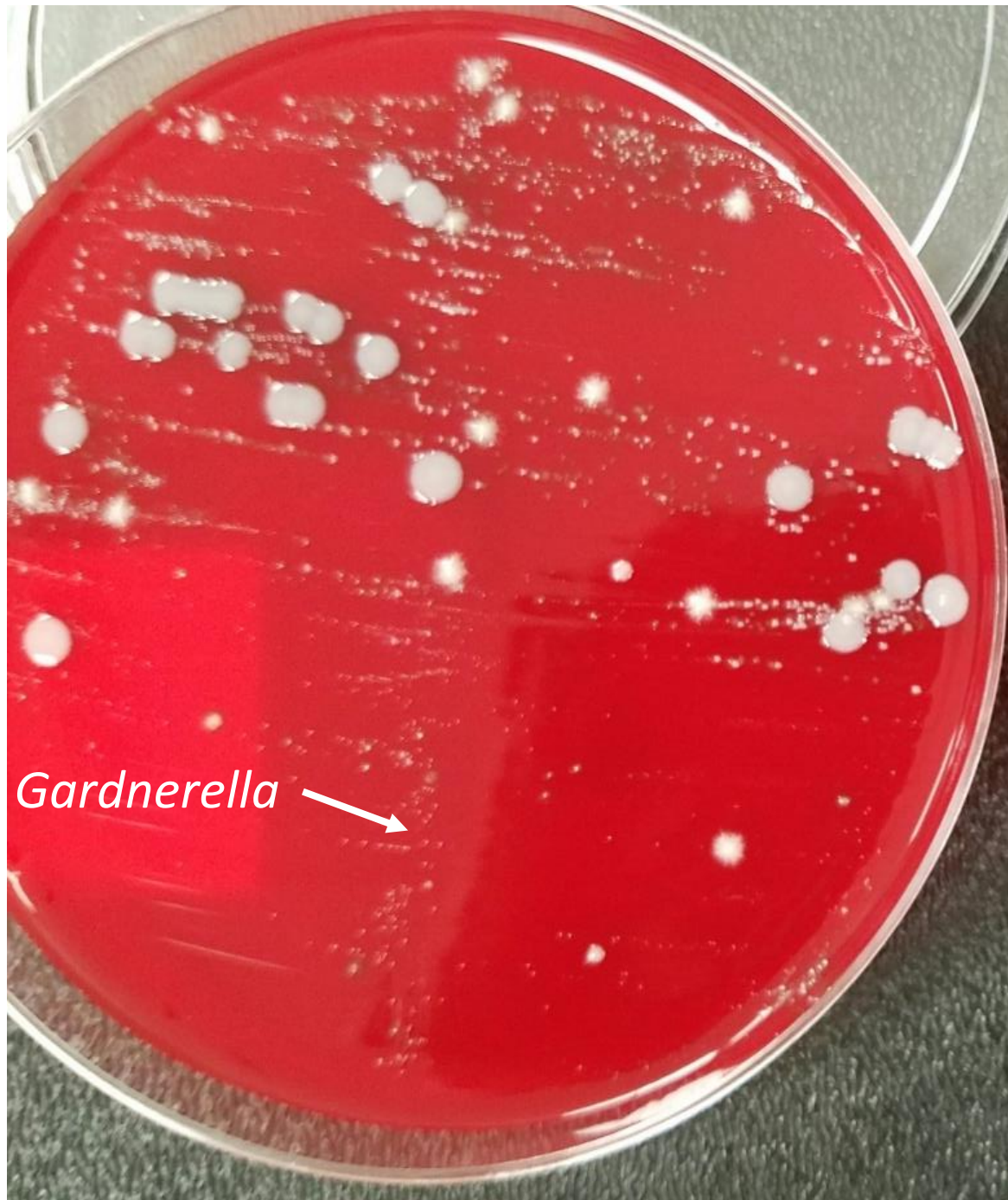


Compiled by:
Wisconsin Clinical Laboratory Network
Laboratory Technical Advisory Group (LabTAG)

Methicillin-resistant *Staphylococcus aureus*
on MRSA-specific chromogenic medium



Urine culture (blood, CNA agar):
Enhanced growth of *Gardnerella vaginalis*
on CNA plate (right)

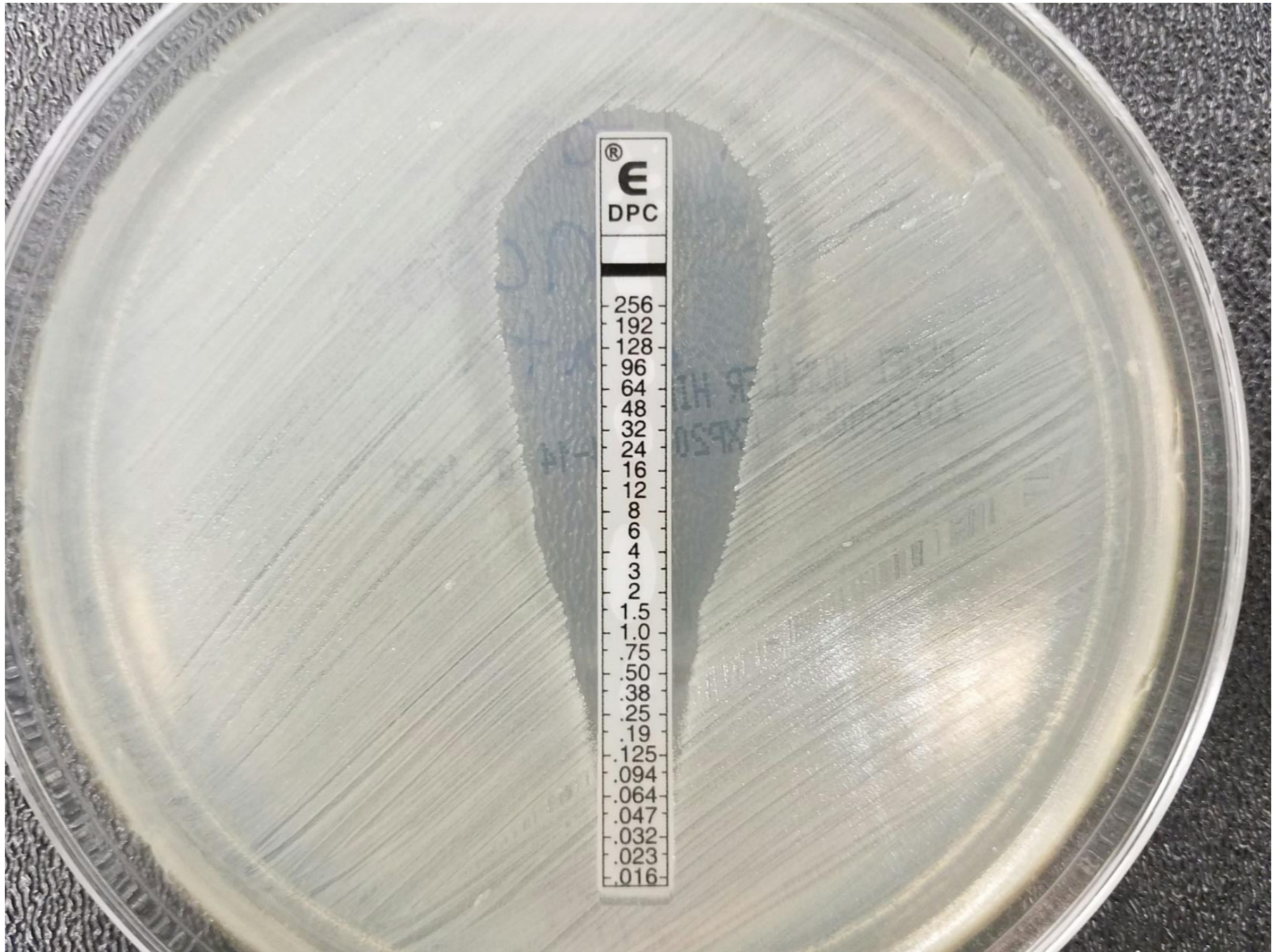


Gardnerella →



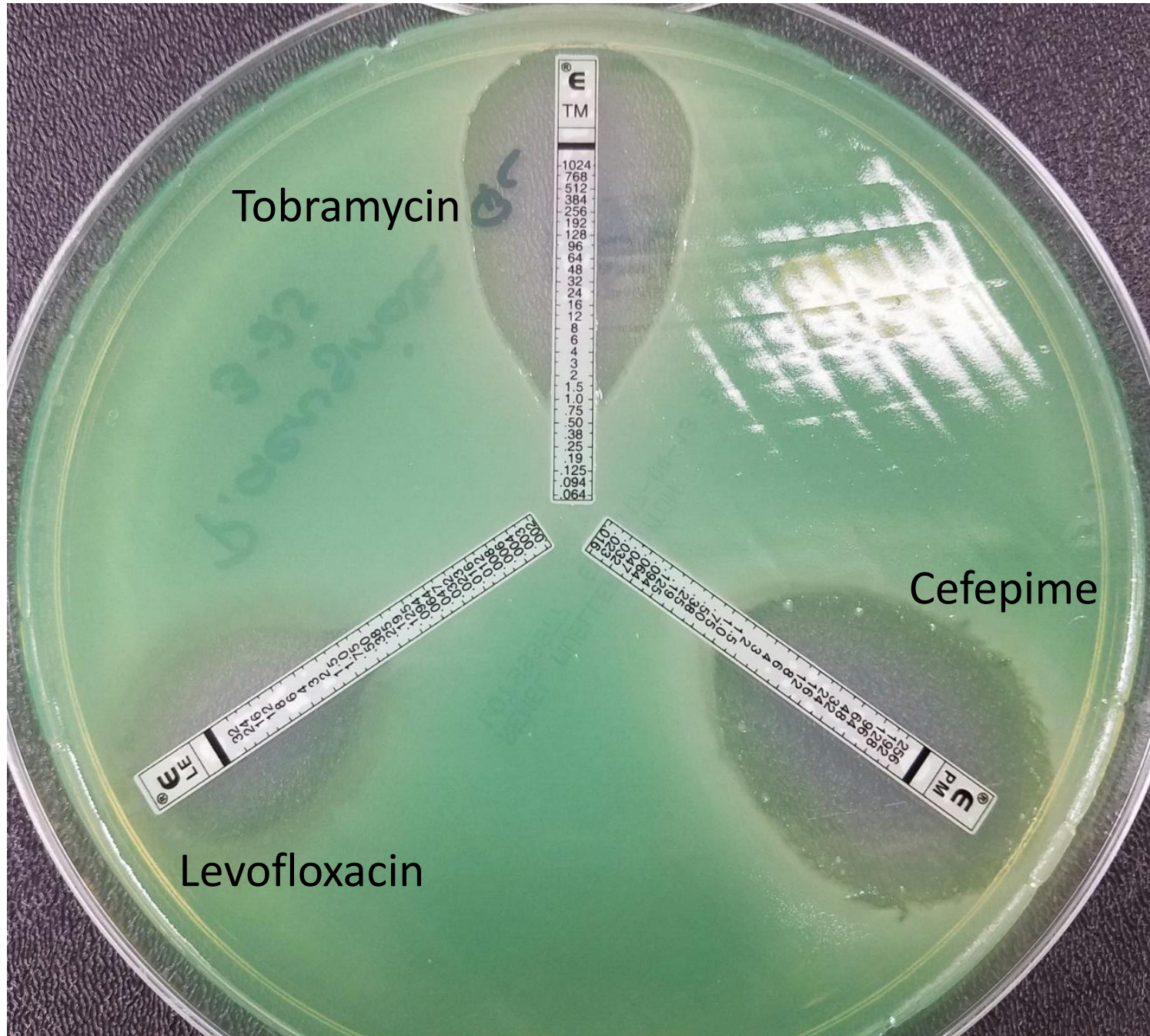
Gardnerella →

Etest susceptibility testing of
methicillin-resistant *Staphylococcus aureus*;
daptomycin MIC 0.25 µg/mL



Etest susceptibility testing
of *Pseudomonas aeruginosa*;
levofloxacin MIC 1.0 µg/mL*
tobramycin MIC 1.0 µg/mL*
cefepime MIC 2.0 µg/mL

* - rounded to nearest doubling dilution



Tobramycin

Cefepime

Levofloxacin