

Plate Growth Distribution Training Guide

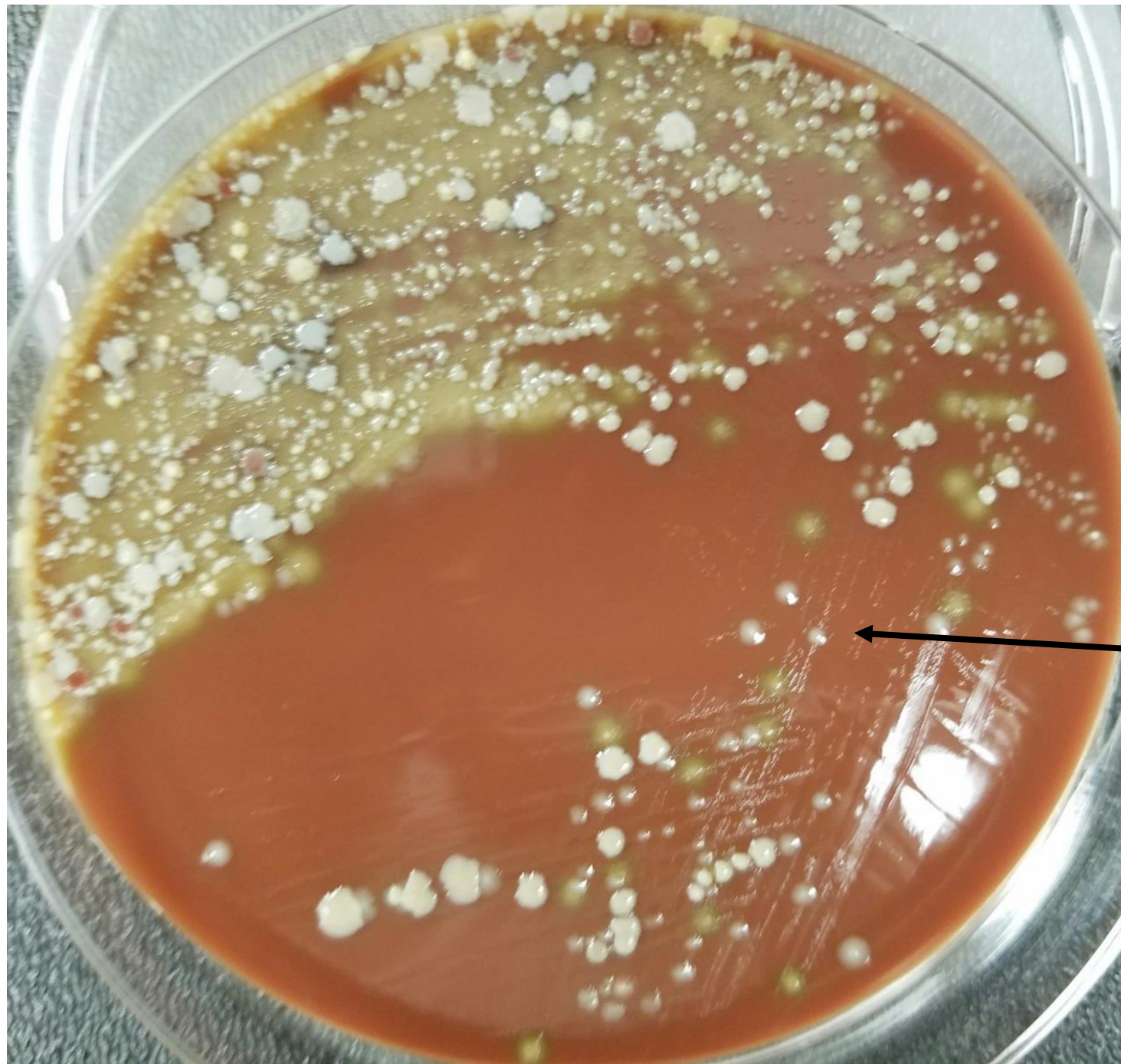
Genital Tract Culture



Compiled by:

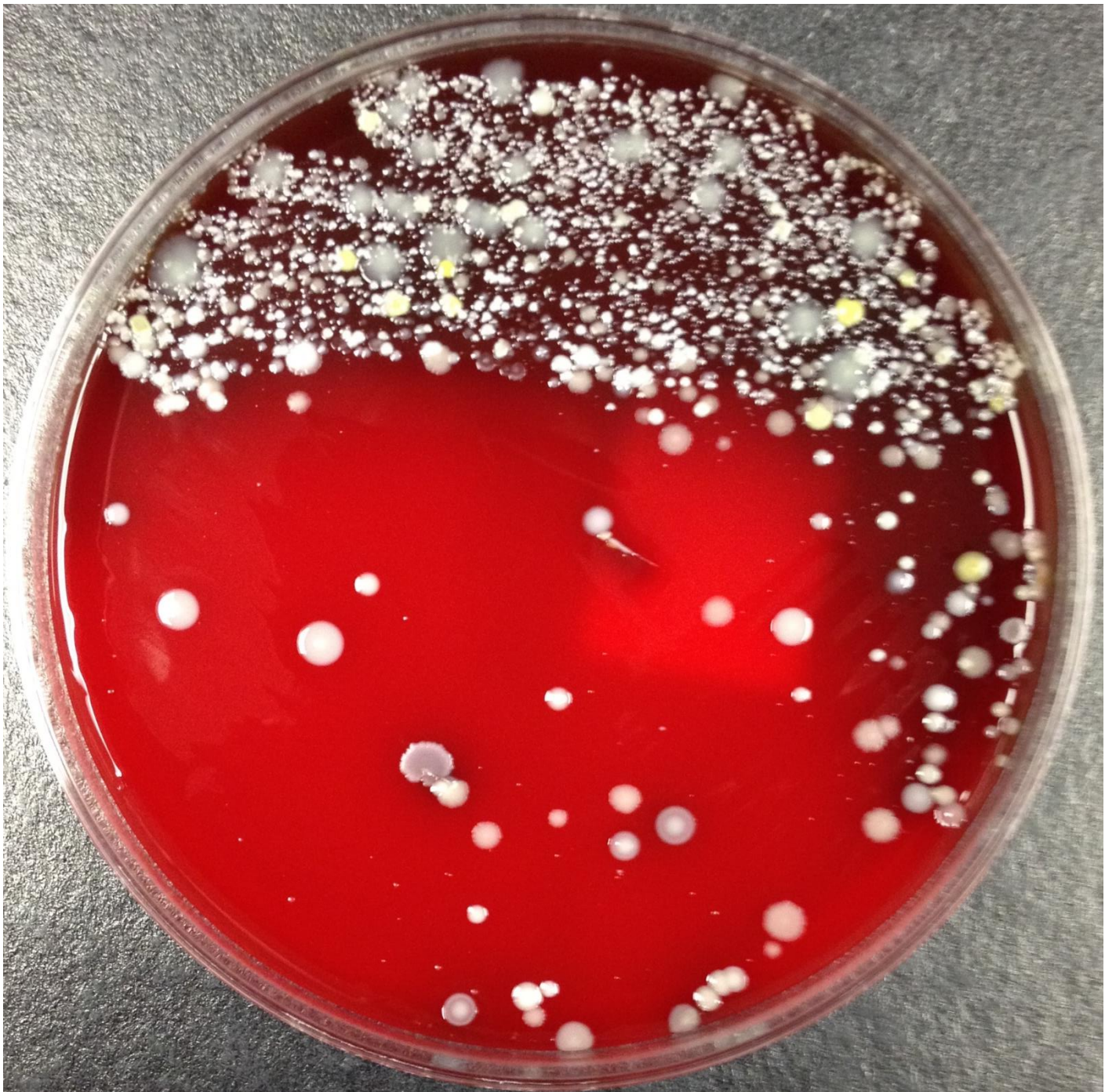
Wisconsin Clinical Laboratory Network
Laboratory Technical Advisory Group (LabTAG)

Vaginal culture (chocolate agar):
Abundant *Gardnerella vaginalis*
Abundant normal vaginal flora



Gardnerella vaginalis

Streptococcus agalactiae screen (blood agar):
mixed Gram-positive flora;
no *S. agalactiae* detected by PCR



Streptococcus agalactiae screen (blood agar):
mixed Gram-positive and Gram-negative flora;
no *S. agalactiae* detected by PCR

